



ARK Operation

CARES Meeting April 7th, 2011





Elements of Our Emergency Response

- ◆ First Responders: Fire, Sheriff, Public Works
- ◆ Office of Emergency Services (OES)
- ◆ Citizen Corps
 - Block Leaders
 - CARES
 - CERT
 - MRC
- ◆ ARKs



The Role of the Citizen Corps

- ◆ FEMA defines the mission of the Citizen Corps:

“The mission of Citizen Corps is to harness the power of every individual through education, training, and volunteer service to make communities safer, stronger, and better prepared to respond to the threats of terrorism, crime, public health issues, and disasters of all kinds.”

The top-left corner of the slide features a graphic of the American flag, showing blue stars on a dark blue field and a red and white striped field. The graphic is partially obscured by a white curved shape that frames the top-left of the main content area.

CARES Mission Statement

“The mission of the Cupertino Amateur Radio Emergency Service is to maintain and train Amateur Radio volunteers capable of providing professional emergency communications, increasing the City's emergency response effectiveness, and speeding the recovery of our community.”

CERT Mission Statement (Draft)

“The PRIMARY function of CERT members is to be the "hands" reaching out to the community. They assist with controlling the immediate threat by treating injuries, searching for missing people, rescuing those who are trapped and keeping people out of unsafe areas. As they respond to their identified reporting locations, they also provide information about existing hazards and the disaster impact on pre-identified sites such as schools and water supply tanks.”



MRC Mission Statement

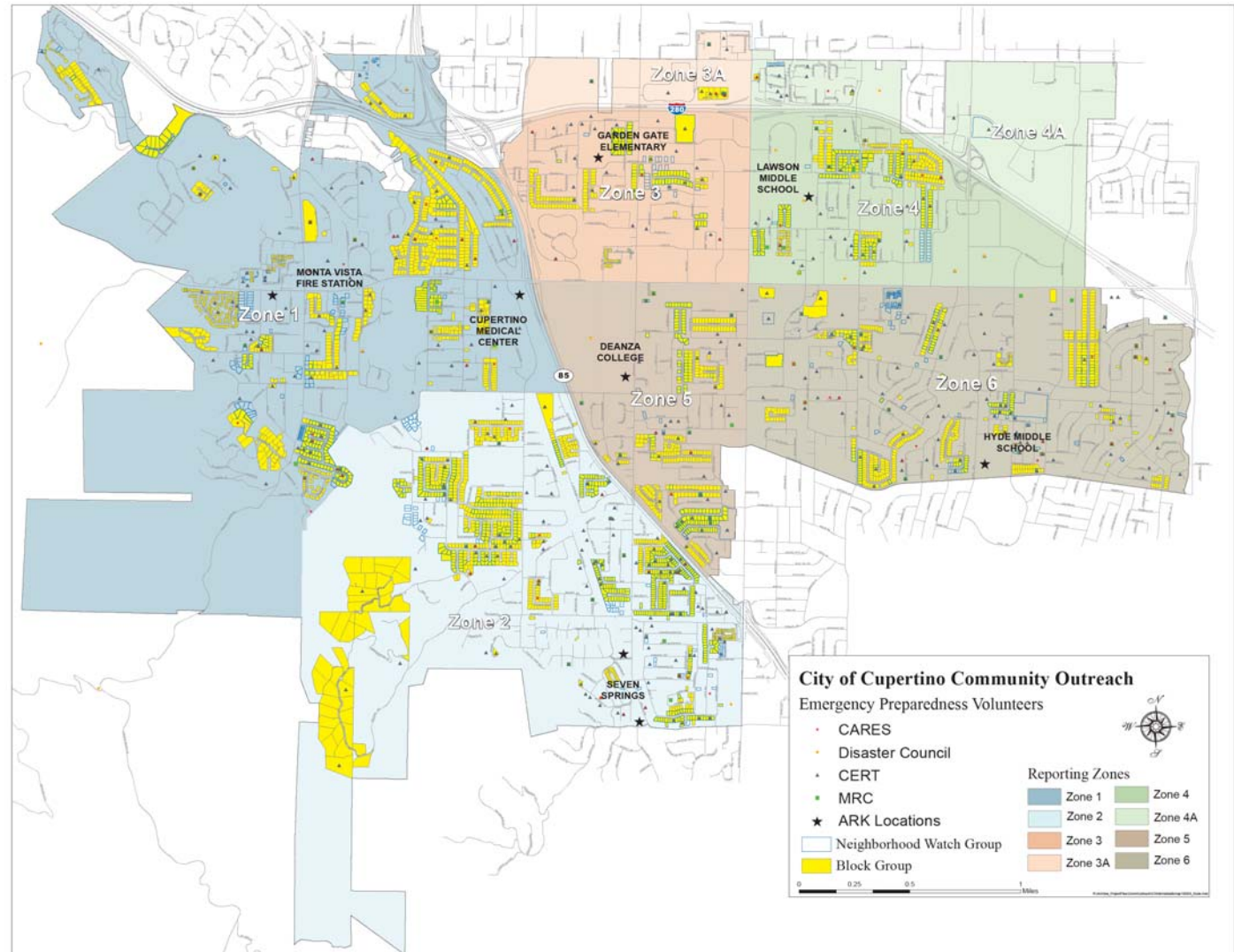
“The mission of the Medical Reserve Corps (MRC) is to establish teams of local volunteer medical and public health professionals who can contribute their skills and expertise throughout the year and during times of community need.”

Citizen Corps Capabilities

Category	Activity	who				for whom						when			
		Block Leader	CERT	CARES	MRC	Residents	Volunteers	City Management (EOC)	Fire Dept.	Sheriff Dept.	Red Cross	Other NGOs	Rescue	Relief	Recovery
ARK Operation	Set-up and basic operation (open ARK, establish leadership team, documentation)		x				x						x	x	
	Eyes and ears	x	x	x	x	x	x	x	x	x			x	x	
	Collect information from incoming volunteers, block leaders and residents	x	x			x	x	x	x	x			x	x	
	Disseminate information to residents and volunteers	x	x			x	x						x	x	
	Perform safety assessment	x	x	x		x							x		
	Perform light search & rescue operations		x			x							x		
	Limited medical basic life support				x	x							x		
Communications	Communication between EOC (radio room), ARKs and other event sites			x			x	x	x	x	x		x	x	x
Child Care	Set-up and operation		x				x						x	x	
Animal Shelter	Set-up and operation		x			x	x						x	x	
General Assistance	EOC setup and operation		x	x				x					x	x	
	Shelter setup and operation		x	x	x						x	x	x	x	x
	Point of Distribution setup and operation		x	x	x						x	x		x	x
	Debris removal	x	x					x	x				x	x	
	Traffic management	x	x	x				x		x			x	x	

A Decentralized, ARK-Centric Approach

- ◆ Emergency response will be coordinated out of the EOC in City Hall (or the parking lot)
- ◆ Cupertino is divided into
 - 6 reporting zones
 - 7 ARKs
- ◆ Zone borders follow freeways and major arteries



The Role of an ARK

- ◆ An ARK is
 - A place where residents can go to report emergencies and to request help
 - A site where volunteers provide limited medical basic life support to residents
 - A pool of supplies for volunteers involved in the rescue and relief operation
 - A base for Citizen Corps operations such as damage assessment and light search&rescue



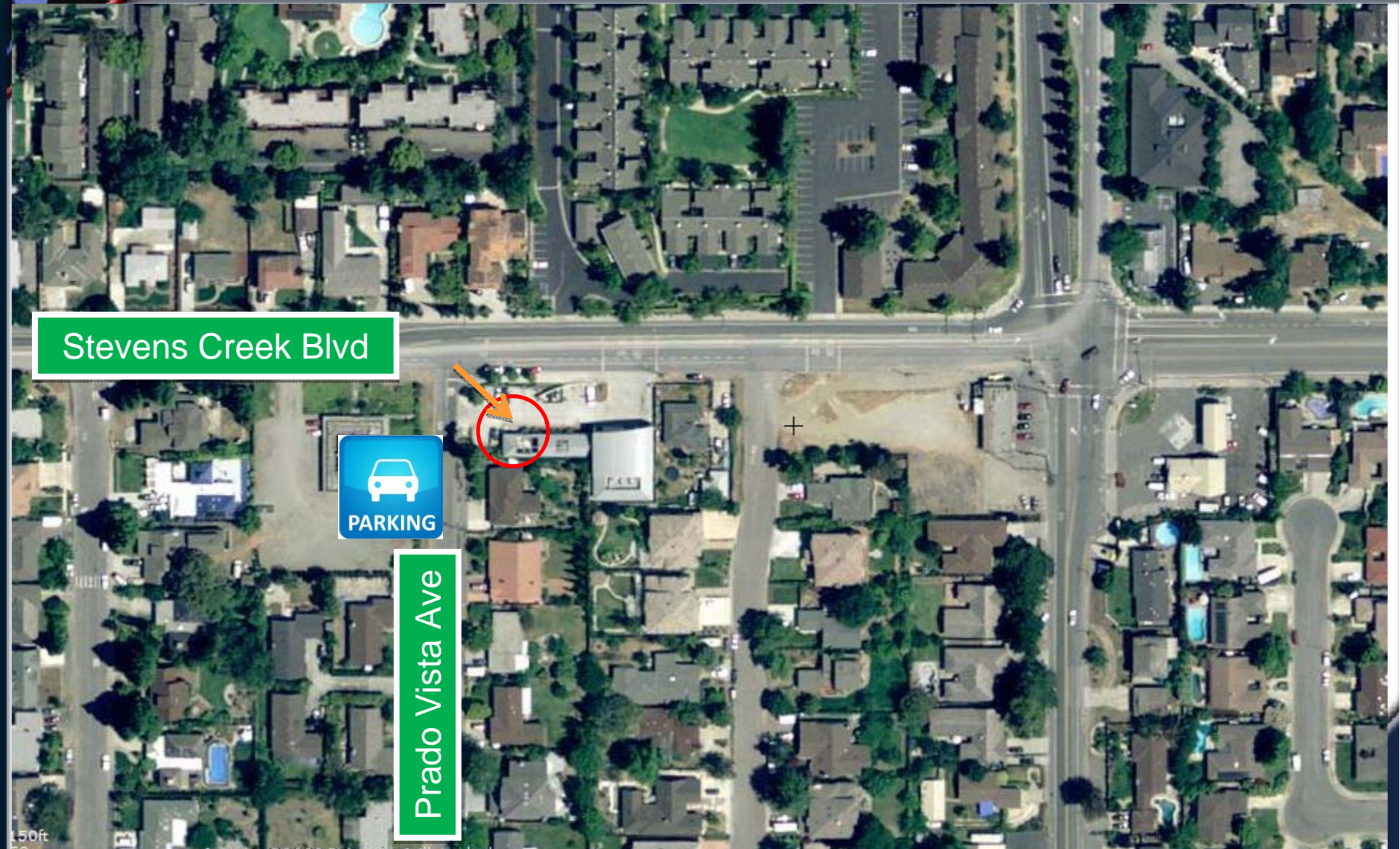
What is in an ARK?



- ◆ Supplies to operate the ARK: checklists, forms, signage
- ◆ Stationary, clip boards
- ◆ Tables and chairs
- ◆ Canopies and tents
- ◆ Cups, plates, some water
- ◆ Cots, mats, pop-ups
- ◆ Porta potty
- ◆ Generators, lighting, flashlights
- ◆ Map books
- ◆ Communications: J-pole antenna, FRS radios
- ◆ CERT supplies: S&R bags, tools, cribbing material
- ◆ Medical (MRC) supplies



Montavista ARK (MVF)



April 7th, 2011

Page 10

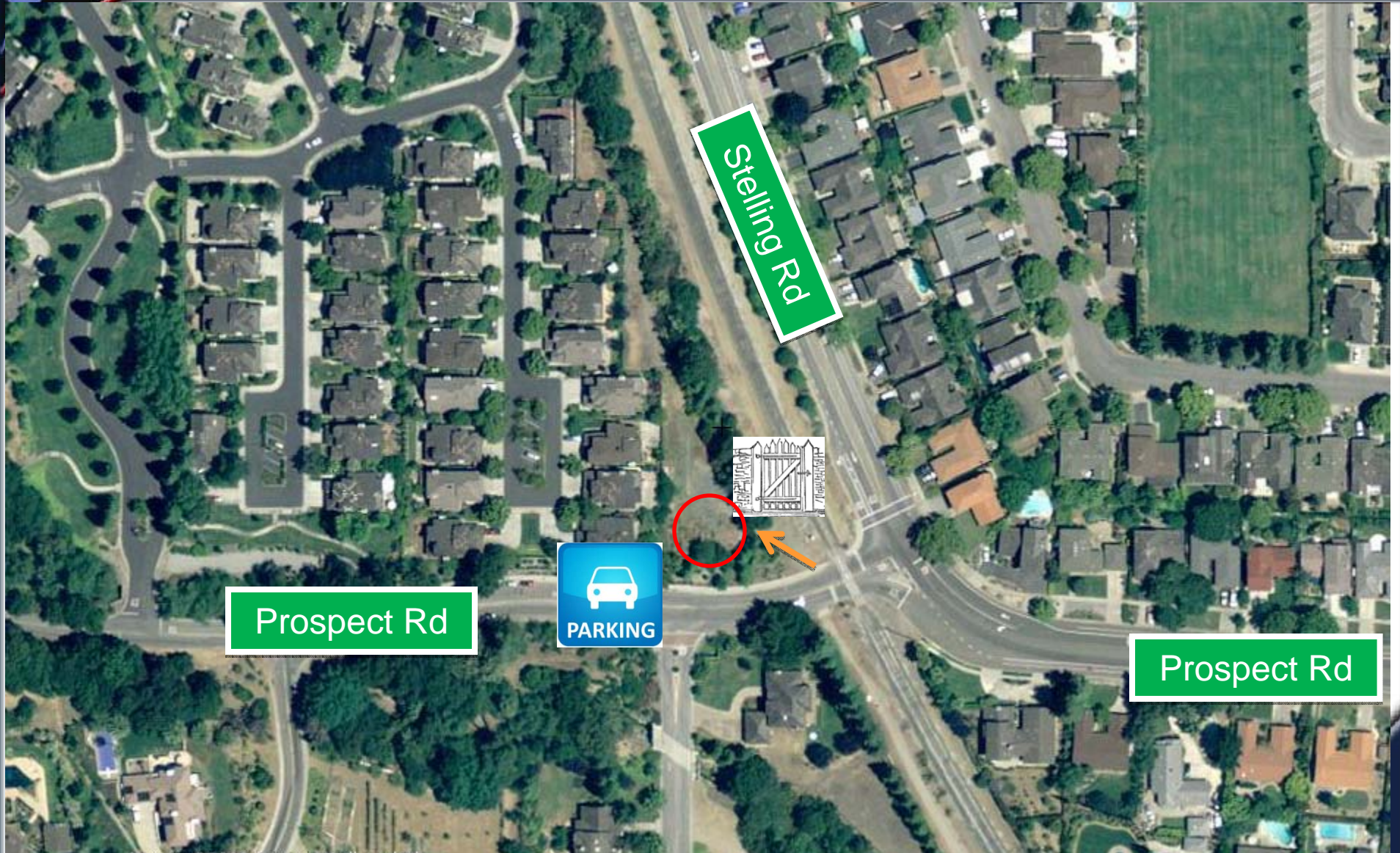
Gerd Goette

Montavista ARK (MVF)

- ◆ Location:
Montavista Fire Station,
Stevens Creek Blvd and
Prado Vista Ave
- ◆ This ARK is not a container,
the supplies are stored in the
garage
- ◆ Contacts:
 - ◆ Ken Ericksen
 - ◆ Al Boleda
 - ◆ Allan Gontang
 - ◆ Andy Huang
 - ◆ Isabel Rodriguez



Seven Springs ARK (SSH)



Seven Springs ARK (SSH)

- ◆ Location:
Intersection of N Stelling Rd and Prospect Road, next to the railroad crossing
- ◆ This ARK is located in a gardening lot of the Seven Springs HOA and accessible through a utility gate next to the railroad corridor
- ◆ Contacts:
 - ◆ Ken Ericksen
 - ◆ Gerd Goette
 - ◆ John Maskovitch
 - ◆ Jim Oberhofer
 - ◆ Leroy Wilkinson



Garden Gate ARK (GG)



Castine Ave

Flora Vista Ave



Greenleaf Dr

Garden Gate ARK (GG)

- ◆ Location:
Next to the intersection of Greenleaf Drive and Ann Arbor Drive
- ◆ This ARK is located on the premises of Garden Gate Elementary School
- ◆ Contacts:
 - ◆ Ken Ericksen
 - ◆ Nina Darwalla
 - ◆ Kersi Darwalla
 - ◆ Daniel Nguyen



Lawson ARK (LAW)



Lawson ARK (LAW)

- ◆ Location:
On Vista Rd, behind the sports field.
- ◆ This ARK is located on the premises of Lawson Middle School. Pedestrian entrance through a gate on Vista Drive. There is a double gate a little further up on Vista Rd, for vehicle access.
- ◆ Contacts:
 - ◆ Ken Ericksen
 - ◆ Harvey Barnett
 - ◆ Doug Frieson



DeAnza ARK (DAC)

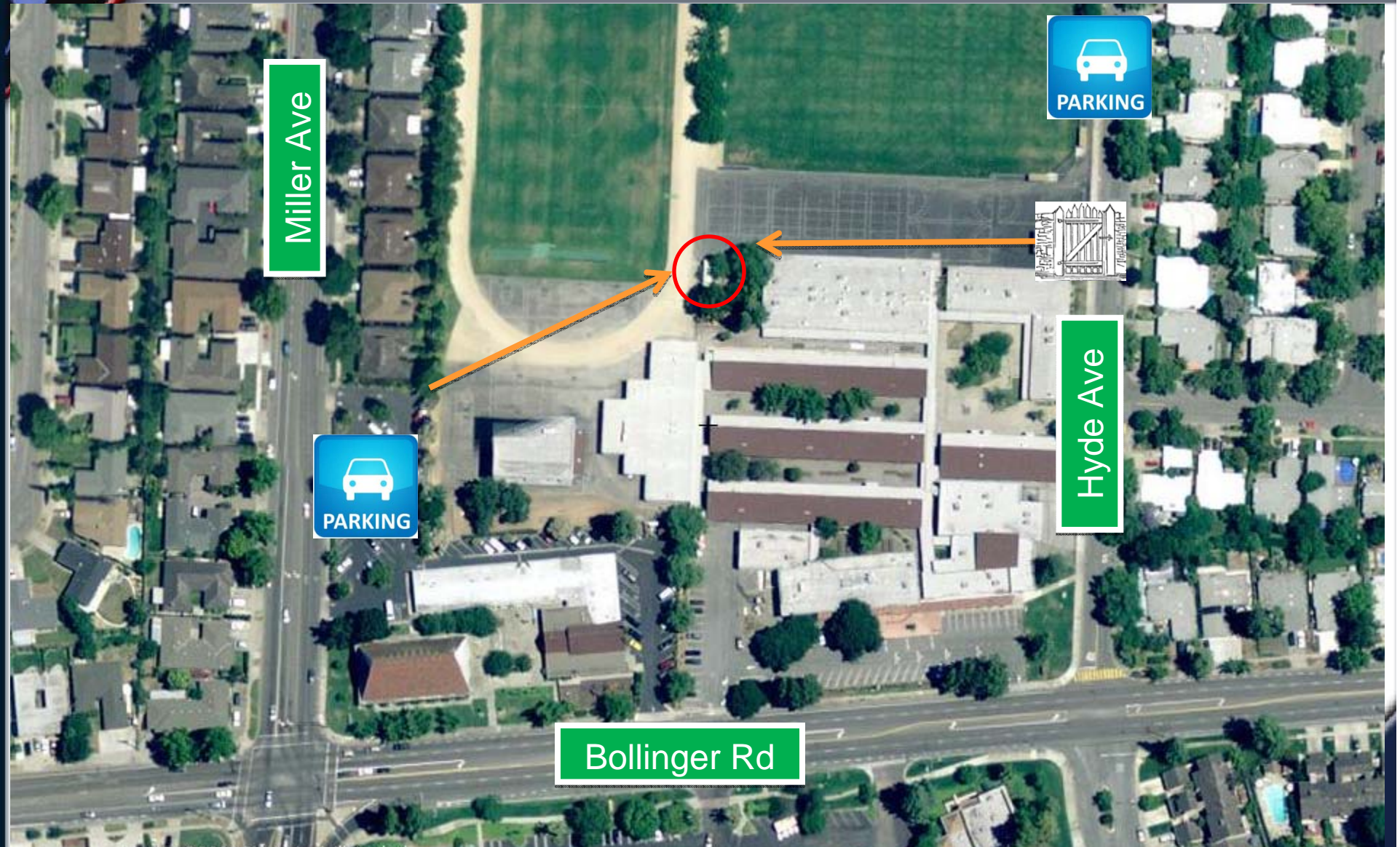


DeAnza ARK (DAC)

- ◆ Location:
Off the DeAnza Access Rd,
close to the intersection of
Stelling Rd and McClellan Rd.
- ◆ This ARK is located on the
premises of DeAnza College.
Enter the campus via DeAnza
Access Rd. \$2 parking fee
required!
- ◆ DeAnza Ark holds
supplies for
child care and
animal shelter
- ◆ Contacts:
 - ◆ Ken Ericksen
 - ◆ Richard Whittington



Hyde ARK (HMS)



Hyde ARK (HMS)

- ◆ Location:
On Miller Rd, north of the intersection with Bollinger Rd.
- ◆ This ARK is located on the premises of Hyde Middle School.
Entrance through a pathway from the parking lot at West Valley Presbyterian Church. Parking also possible roadside on Hyde Ave; pedestrian access through a gate on Hyde.



- ◆ Contacts:
 - ◆ Ken Ericksen
 - ◆ Fari Aberg
 - ◆ Skip Stevens
 - ◆ Phyllis Schmidt





Roles at an ARK

- ◆ Key Holder
 - Has a key to the ARK (fingerprinting required)
- ◆ Custodian
 - Performs maintenance tasks at the ARK
- ◆ ARK Leader
 - Senior citizen corps member
 - Assuming leadership position in assuring citizen corps readiness in this zone
 - Candidate for Incident Commander at this ARK

What happens after disaster strikes?

Check family, home

EOC operational

CARES radio room operational

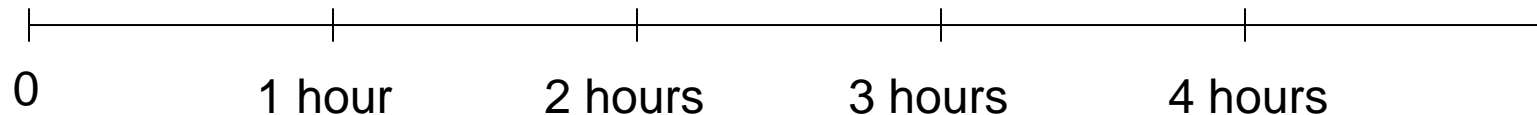
CARES Preliminary Safety Assessment

CARES Infrastructure Safety Assessment

Volunteers go to ARK, setup

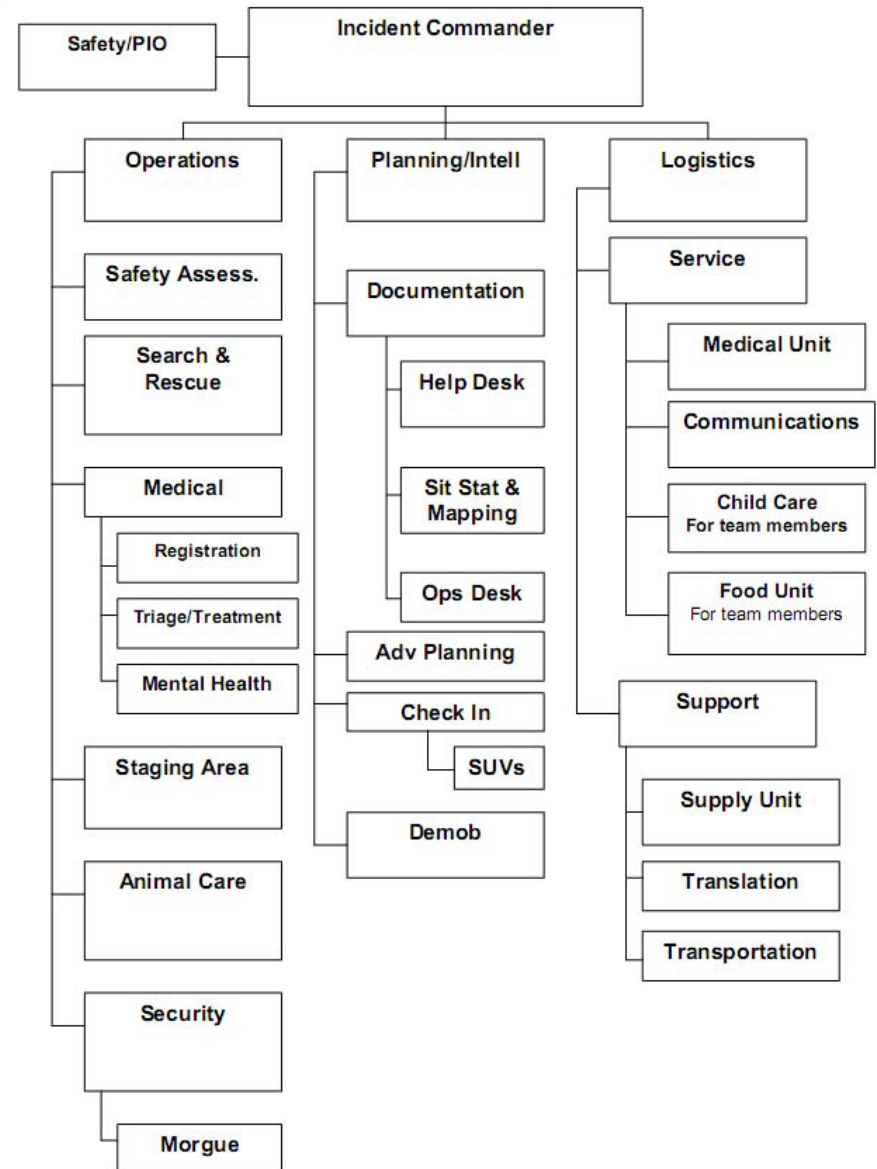
Residents reporting into ARKs: emergencies, damage, help requests

ARK Operations:
Safety Assessment, Search and Rescue, etc.



ARK Operation: ICS

- ◆ ARK operation follows the ICS structure
- ◆ Staffing sequence:
 - Incident commander
 - Check-in
 - Help desk
 - Communications
 - Operations





Incident Commander

- ◆ In charge of all volunteer activities at this ARK and in this reporting zone
- ◆ Responsible for safety of all activities
- ◆ Reports into Citizen Corps Coordinator at EOC
- ◆ Establishes incident action plan (ICS 201)
- ◆ Makes operational decisions in cooperation with P&I and Ops section chiefs

A decorative graphic in the top-left corner of the slide, featuring a portion of the American flag with blue stars on a dark background and a red and white curved border.

Planning & Intel: Tasks

- ◆ Check-in for volunteers and SUVs
- ◆ Help desk for residents
- ◆ Defines tasks for operations
- ◆ Maintains status information and map
- ◆ In charge of demob

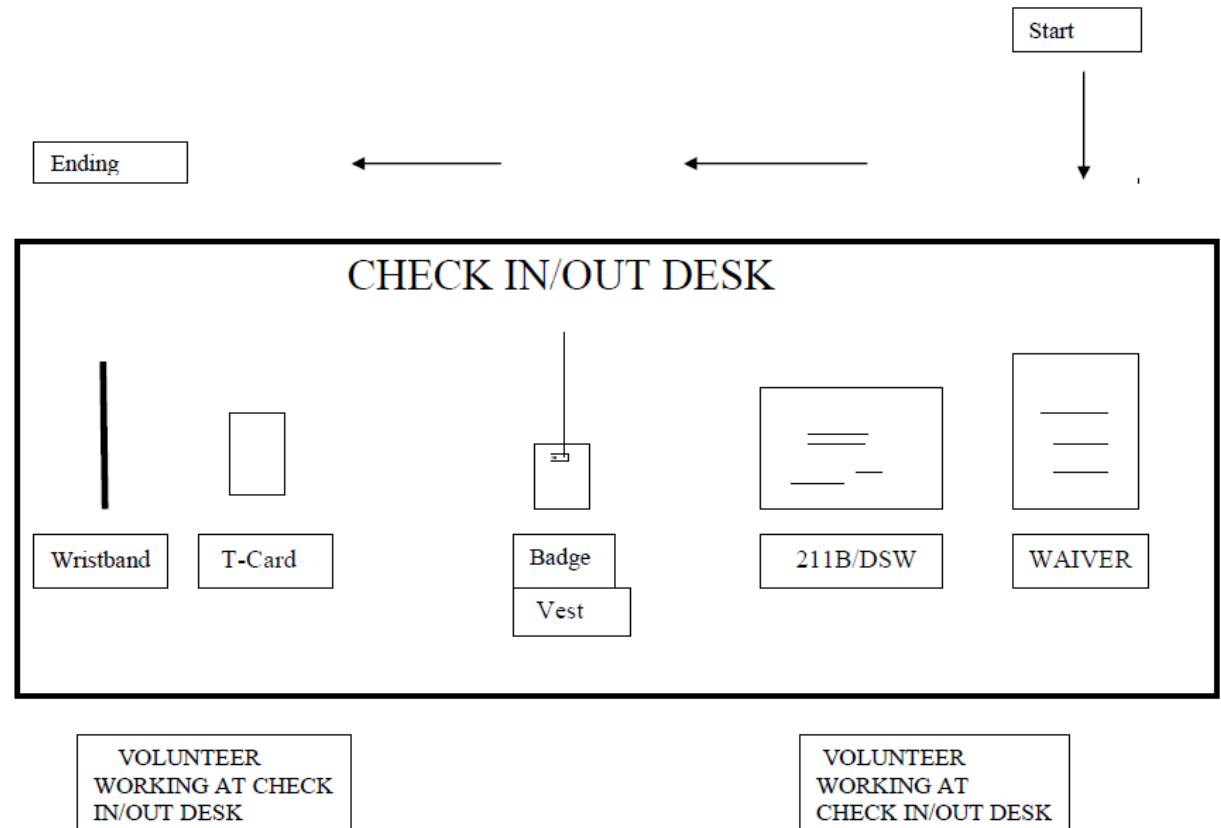
Planning & Intel: Check-In Desk

MISSION: To provide the Check In/Out function for all Volunteers reporting to the ARK.

REPORTS TO: Planning and Intel Section Chief.

TABLE LAYOUT:

- ◆ All volunteers must
 - Check in, using form 211B
 - Carry vest and badge (or be issued one)
 - Have a T-card
 - Get a wrist band



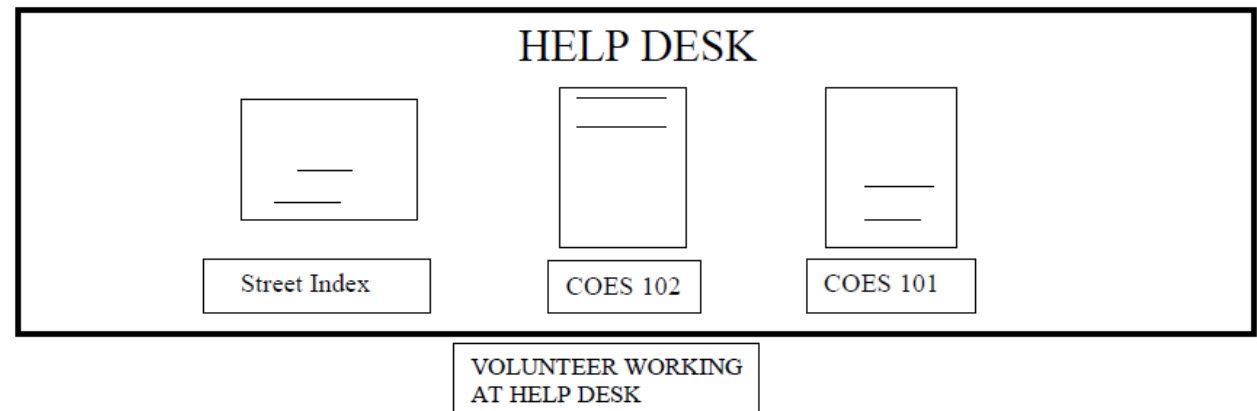
Planning & Intel: Help Desk

- ◆ Incoming residents
 - Are directed to the help desk
 - Can report any emergency, injury or damage
 - Requests for assistance are logged on form 101
- ◆ Residents should NOT be allowed to walk to the other tables.

MISSION: To provide a first point of contact for community members (CMs) who are in need of assistance by processing Assistance Request Forms- COES 101 or Situation Status-COES 105.

REPORTS TO: Documentation Leader.

TABLE LAYOUT: -



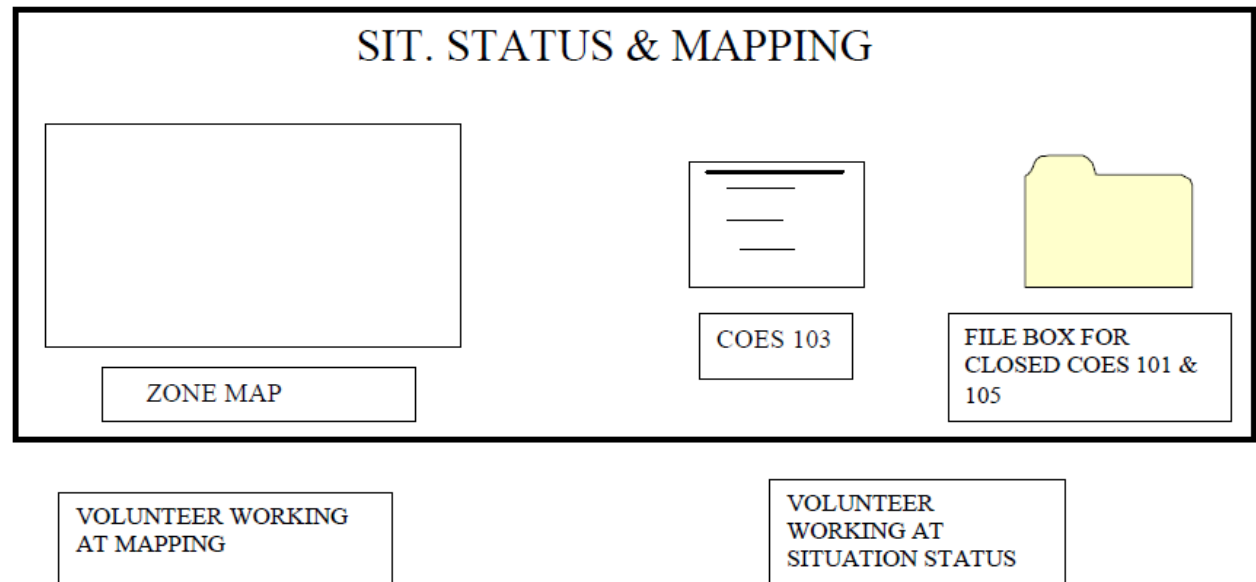
Planning & Intel: Mapping and Sit Stat

MISSION: Responsible for collecting, evaluating, and disseminating tactical information related to the incident.

REPORTS TO: Documentation Leader.

TABLE LAYOUT:

- ◆ Maintains a list of all tasks (completed, pending or new) on form 103
- ◆ Uses forms 101 (from help desk) and 105 (created by P&I) to define tasks
- ◆ Updates the zone map with current status information





Operations: Tasks

- ◆ High level assessment (eyes & ears)
- ◆ Safety assessment
- ◆ Light search & rescue
- ◆ Disaster medical
- ◆ General assistance (helping hand), e.g.
 - Establishing perimeter
 - Directing traffic (as advised by Sheriff dept)
 - Shelter operation (as advised by Red Cross)

Operations Desk

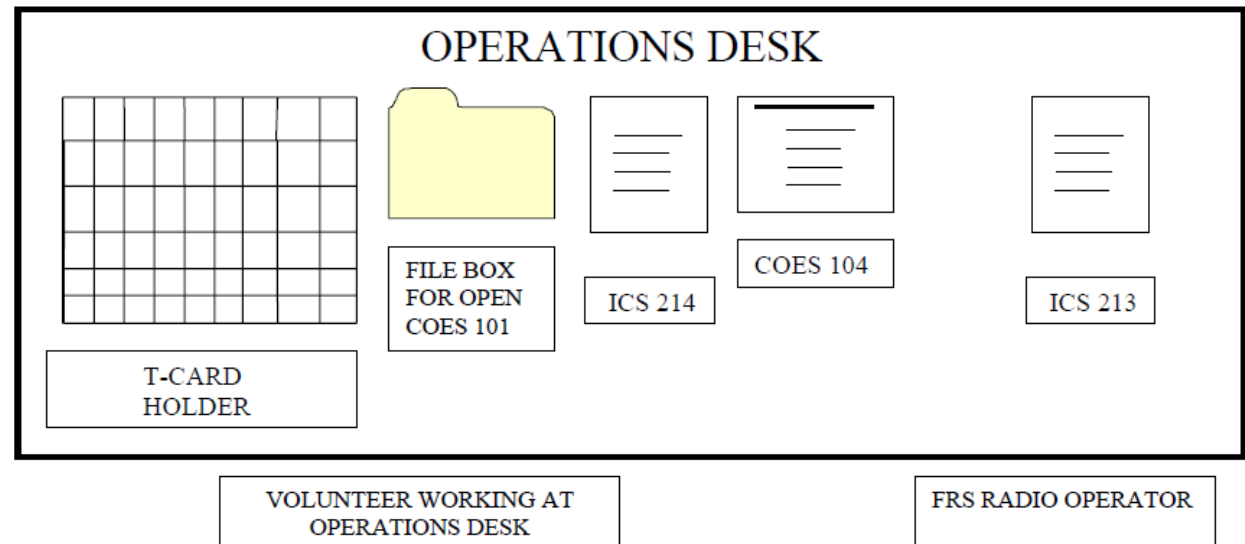
- ◆ Keeps track of all volunteers, using their individual T-cards and team T-cards
- ◆ Is responsible for assembling and dispatching teams, responding to tasks defined by P&I
- ◆ Maintains a list of all tasks (completed, pending or new) on form 104

MISSION: To coordinate and document all activities within the various Ops sub-sections.

REPORTS TO: Ops Section Chief.

AREA: All functions will be controlled from the operations desk. The staging area will be a dedicated area marked with cones and caution tape, as a waiting area for volunteers ready to be deployed.

TABLE LAYOUT:





Operations: Disaster Medical (MRC)

- ◆ Establish treatment area
- ◆ Triage incoming patients
(Immediate, Delayed, Minor, Deceased)
- ◆ Provide basic life support (to the extend possible)
- ◆ Provide first aid (to the extend possible)
- ◆ Document patient status
- ◆ Prepare and hand over patients for transportation
(when available)



Logistics: Supplies

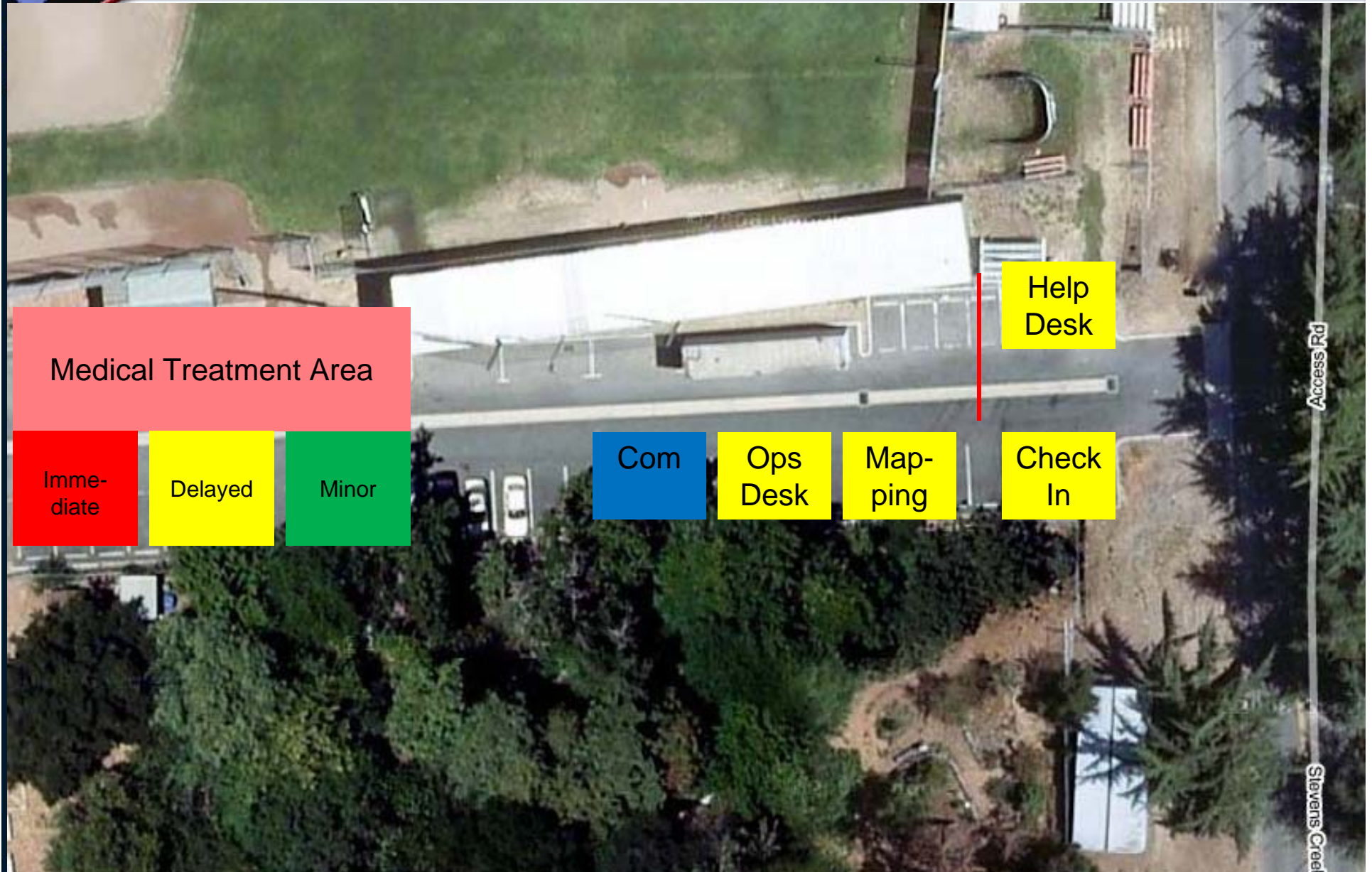
- ◆ Tracks ARK inventories
- ◆ Maintains ARK supplies in good working condition
- ◆ Replaces defective and missing items
- ◆ Procures additional supplies as needed (and approved)

Logistics: Communications

- ◆ CARES establishes ham radio link from each ARK to the EOC
 - Voice
 - Packet
- ◆ FRS / GMRS communication within the reporting zone, e.g. from ARK to teams deployed in the zone
- ◆ CARES field communicator may be asked to also be the FRS operator at the ARK



ARK Setup: De Anza





Interaction ARK – EOC

- ◆ City Hall is converted into an Emergency Operations Center (EOC), with representatives from city management, sheriff dept, county fire, citizen corps, utilities etc
- ◆ ARKs communicate with the EOC via CARES
- ◆ ARKs can report emergencies, convey status information and request additional resources
- ◆ ARKs should not rely on the EOC for tactical decisions