
Cupertino Amateur Radio Emergency Service

Date: Thursday, 05-January-2006, 19:30

Event: CARES Monthly Meeting, Orientation Training

**“Welcome to the W6TDM Repeater”
a picture tour**

W6TDM/R background

- Since 1987, the Tandem Radio Amateur Club (TRAC) has hosted W6TDM, a low level 440 repeater in Cupertino, located at a Tandem then Compaq now HP building.
- HP Corporation is selling the building where the repeater is located, stated it does not see the repeater fitting into their current emergency plans, and refused to find a new home for it.
- CARES was approached and, with the support of the City, agreed to assume ownership and operational responsibility for W6TDM/R.



A picture taken of the repeater site near the intersection of Tantau Avenue and Vallco Parkway.

A view from the roof looking at the antenna (W6TDM antenna is on the left).



The repeater is all the way at the end of the aisle on the right (beige cabinet).

Their battery rack consisted of 8 sealed lead acid 6 volt 200 Ah batteries, each weighing ~95 lbs!



W6TDM goes off the air...

On the roof, Dale KT6DM disconnects
the coax from the antenna...



... while Morris KE6CRH and Vince K6TEN
carefully disconnect the power...



Here's the front view...

... and back view (below) of the original repeater.

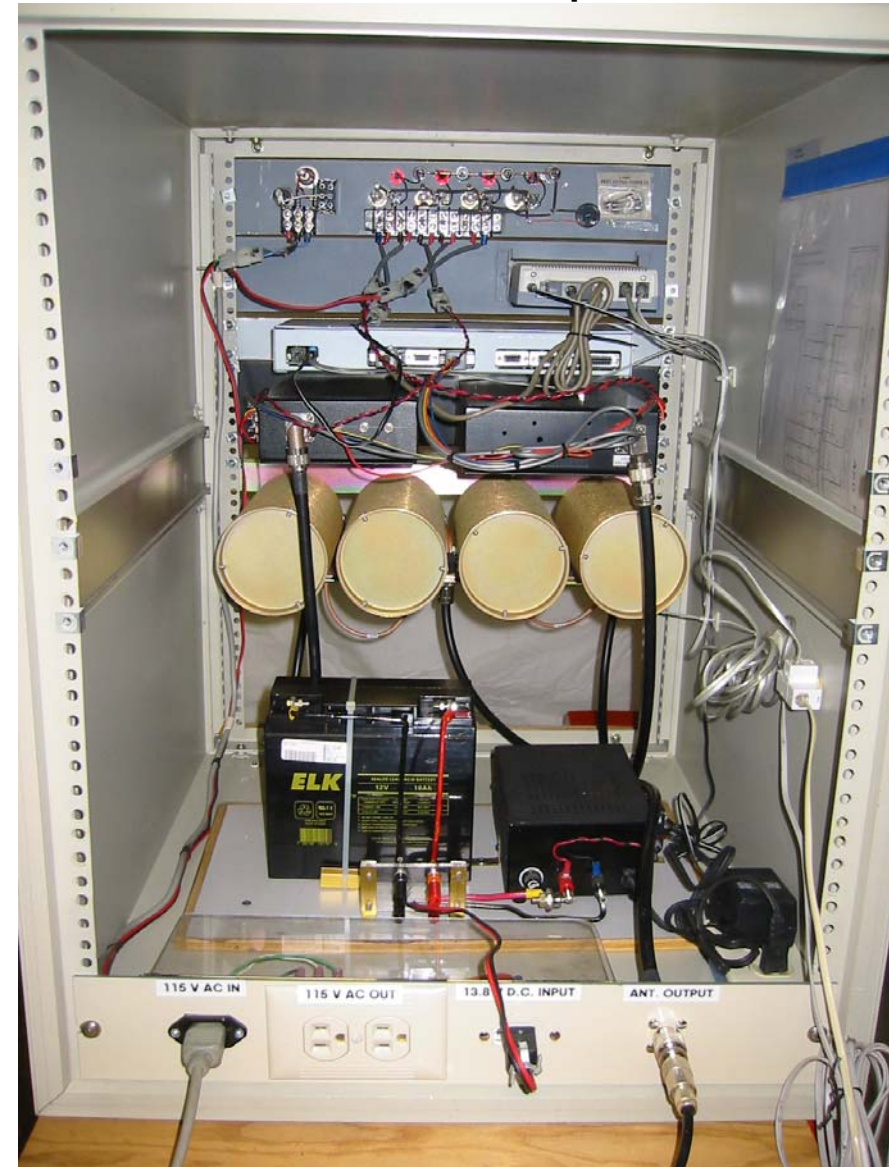
Because of the limited space given to us, we decided to repackaging the repeater into a smaller cabinet.

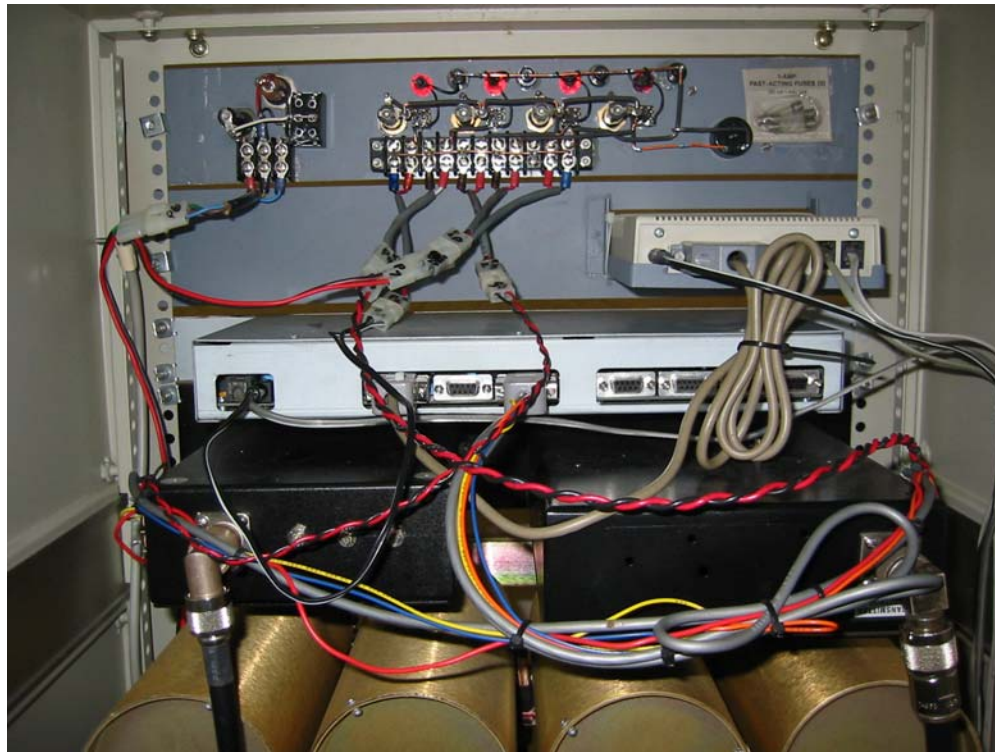




After Vince did his repackaging magic...

... front and back view of the repeater!





The Power distribution and modem panels...

... counting the minutes before reclaiming my garage!



At the City's Service Center, Vince and his "staff" decide how to hoist the repeater up into position.

10 minutes later and 10 feet higher, the repeater is in its new home.



Vince installs the 440 Antenna on the Service Center roof...

... but has bigger and better (and higher!) plans.





W6TDM/R back on the air!



W6TDM Repeater specifics

- Frequency: 440.150+, PL=100
- Output Pwr: 4 watts (currently)
- Elevation: ???
- Location: End of Mary Avenue, at the City Service Center
- Pwr Supply: Battery + DC P/S + City Generator
- Telemetry: Date/Time, Power, Inside & Outside Temperature
- Trustee: TRAC, to be transferred to CARES
- Status: On the air! W6TDM will continue to be a low level, open repeater for the local ham radio community.
- Plans: Need to work the repeater (TAC-4?) into our response plans.

