

Mixed Message Passing

November 3, 2016
Judy Halchin KK6EWQ





Topics

- Types of messages
- Content of messages
- Decisions you'll need to make
- Preparing to send a message
- Sending a message
- What to do after sending a message





!!! BIG SCARY EARTHQUAKE !!!

1. Take care of yourself and your family
2. Check on your neighbors and help them as needed
3. Turn on your radio to Cupertino TAC 1
4. Check into the net
5. Do a PSA when requested
6. Receive an assignment — Garden Gate ARK





A little later...

You arrive at Garden Gate School and park.

What do you do next?

Check out of the resource net

Check into the message net

What kind of messages are these?

How do you send them?

What do you do next?

Log this on your ICS 214 Unit Log





You walk over to the ARK...

- There are four CERTs, but the ARK is closed.
- One of the CERTs asks you to sign in.
- Another CERT explains that they don't know the combination to the lockbox that holds the ARK key. Can you get the combination, please?

Sure, you can do that.

You have some decisions to make

- To whom do you send the message?
- Will you send it by voice or packet?
- Should it be a formal, written message or a tactical message?





Message Sending Process

Before you send the message

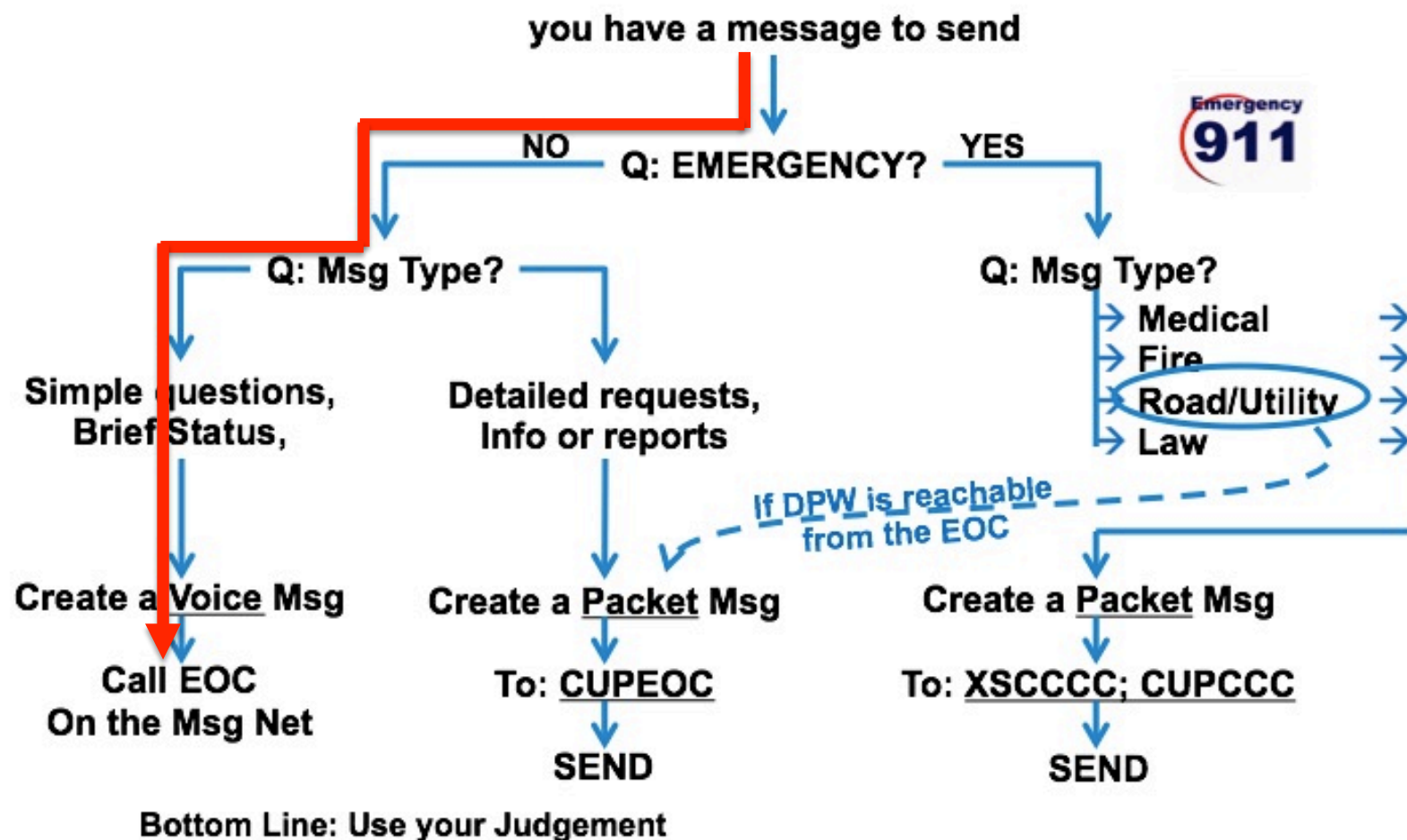
1. Decide how to send it (type of message)
2. Get the message ready to send
3. Make sure you are ready to send it

After you send the message

1. Complete the sending information on the ICS 213 (if used)
2. Log the message on your ICS 309 Communications Log



Decide how to send the message





Message Sending Process

Before you send the message

- ✓ 1. Decide how to send it (type of message)
- ✓ 2. Get the message ready to send
 - Think about how you'll word the message
- ✓ 3. Make sure you are ready to send it
 - Have pen and paper ready to write down any response

After you send the message

- 1. Complete the sending information on the ICS 213 (if used)
- ✓ 2. Log the message on your ICS 309 Communications Log



A while later...

The ARK is open. More CERTs have arrived and set up the command post. Residents have been stopping by. The IC brings you a message and asks you to send it.

| | |
|--|--|
| TO: <i>EOC</i> | Position: |
| FROM: <i>Garden Gate ARK</i> | Position: <i>IC</i> |
| Subject: <i>Ambulance needed</i> | Date: <i>11/5/16</i> |
| Message Priority: Immediate (Red) • | Urgent (Yellow) • Routine (Green) • |

Message:

A man's leg was badly crushed when his house partly collapsed. He is at 22345 Indian Lane. Reported by Susie Someone, 408-555-1212.

Signature: *Susie Someone*

Position: *IC*



Message Sending Process

Before you send the message

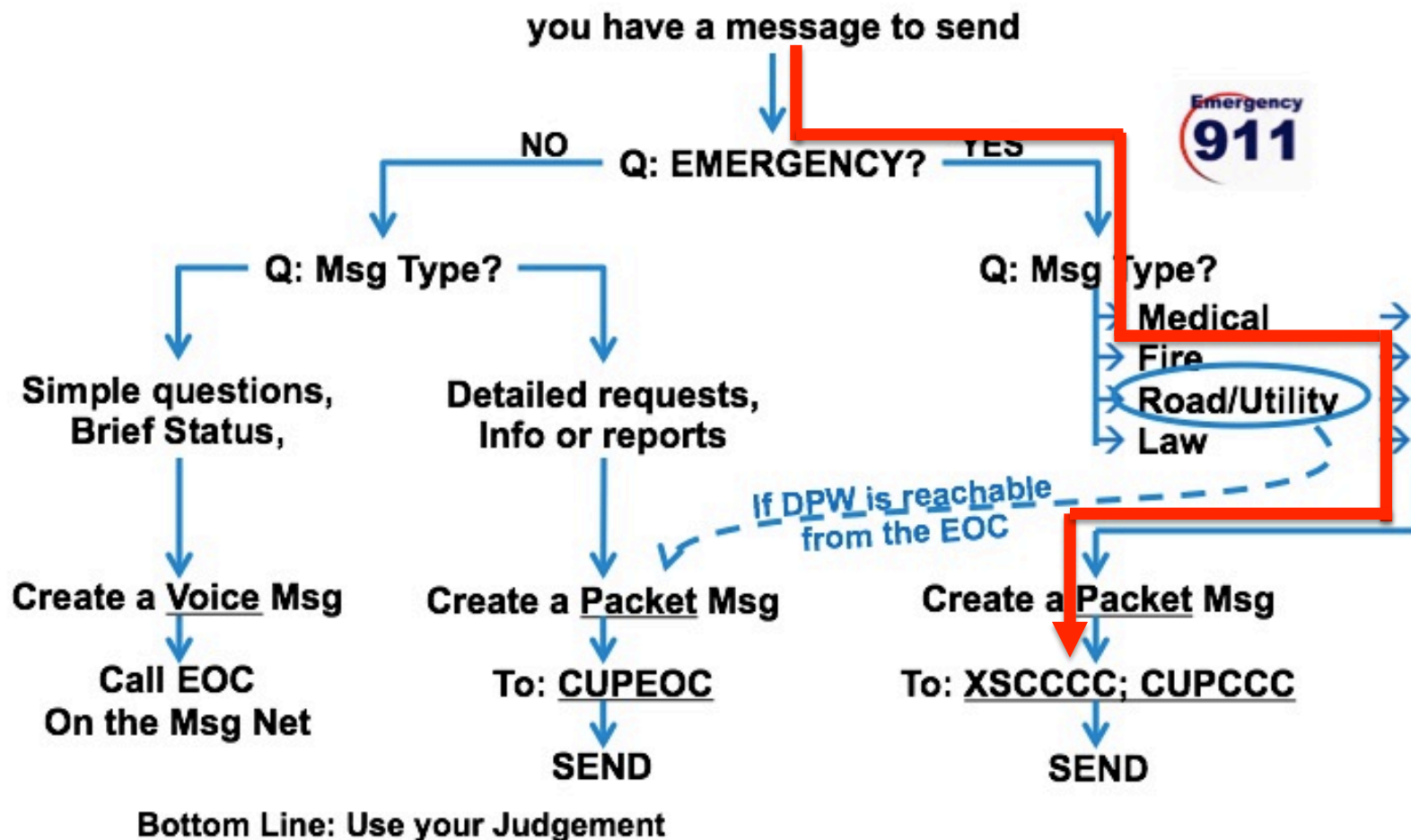
1. Decide how to send it (type of message)
2. Get the message ready to send
3. Make sure you are ready to send it

After you send the message

1. Complete the sending information on the ICS 213 (if used)
2. Log the message on your ICS 309 Communications Log



Decide how to send the message



Message Sending Process

Before you send the message

- ✓ 1. Decide how to send it (type of message)
2. Get the message ready to send
3. Make sure you are ready to send it

After you send the message

1. Complete the sending information on the ICS 213 (if used)
2. Log the message on your ICS 309 Communications Log





Basics of 911 handling

First questions PSAPs ask

What is the address of your emergency?

What city?

What is your emergency?

What is your phone number?

What is your name?

What is happening now?



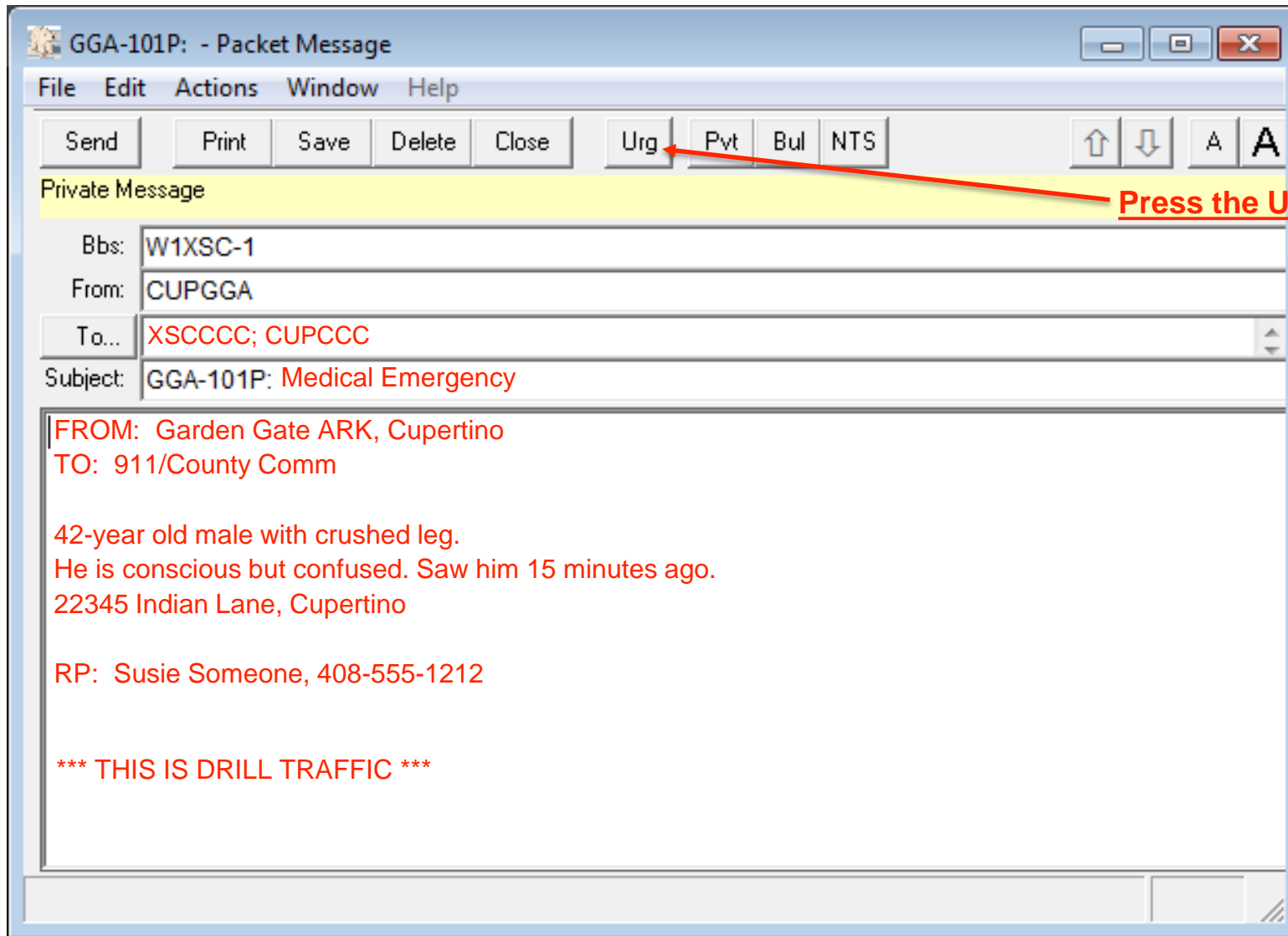
Medical Emergency

What information do you need to include?

- Age of the person
- Gender of the person (male or female)
- Medical problem (e.g., unconscious after a fall, severe bleeding, difficulty breathing)
- How long ago did you see the person or when did the problem occur?
- Location (address) — include the city!
- Reporting party's name, contact phone number



Create a packet message



Press the URGENT button



Message Sending Process

Before you send the message

- ✓ 1. Decide how to send it (type of message)
- ✓ 2. Get the message ready to send
- ✓ 3. Make sure you are ready to send it
 - Is Outpost configured correctly?
 - Is the radio set to the correct frequency?

After you send the message

- 1. Complete the sending information on the ICS 213 (if used)
- 2. Log the message on your ICS 309 Communications Log



Complete the sending information

Cupertino ARK General Message Form

| | |
|------------------------------------|---------------------------------|
| Activation # <u>CUP-16-100</u> | ARK: <u>Garden Gate</u> EOC • |
| Method Sent: Voice <u>Packet •</u> | Message Number: <u>GGA-101P</u> |

| | |
|--|--|
| TO: <u>EOC</u> | Position: |
| FROM: <u>Garden Gate ARK</u> | Position: <u>IC</u> |
| Subject: <u>Ambulance needed</u> | Date: <u>11/5/16</u> |
| Message Priority: <u>Immediate (Red) •</u> | Urgent (Yellow) • Routine (Green) • |

Message:

A man's leg was badly crushed when his house partly collapsed. He is at 22345 Indian Lane. Reported by Susie Someone, 408-555-1212.



Message Sending Process

Before you send the message

- ✓ 1. Decide how to send it (type of message)
- ✓ 2. Get the message ready to send
- ✓ 3. Make sure you are ready to send it
 - Is Outpost configured correctly?
 - Is the radio set to the correct frequency?

After you send the message

- ✓ 1. Complete the sending information on the ICS 213 (if used)
- ✓ 2. Log the message on your ICS 309 Communications Log
 - Outpost will create the entry for the 309



A while later...

The IC hands you another message to send.

| | | |
|---|-------------------------|-------------|
| 1. Incident Name (Optional): | Priority (E, U, R): | Message No: |
| 2. To (Name and Position): <i>Planning, EOC</i> | | |
| 3. From (Name and Position): <i>IC, Garden Gate ARK</i> | | |
| 4. Subject: <i>Shelters</i> | 5. Date: <i>11/3/16</i> | 6. Time: |
| 7. Message: <i>We need a list of shelters that will be opened in Cupertino. We need the time that each will open. We need to know which shelters will allow pets and what kinds of pets each will allow.</i> | | |
| 8. Approved by: Name <i>Susie Someone</i> Signature: <u><i>Susie Someone</i></u> Position/Title: <i>IC</i> | | |
| 9. Reply: | | |



Message Sending Process

Before you send the message

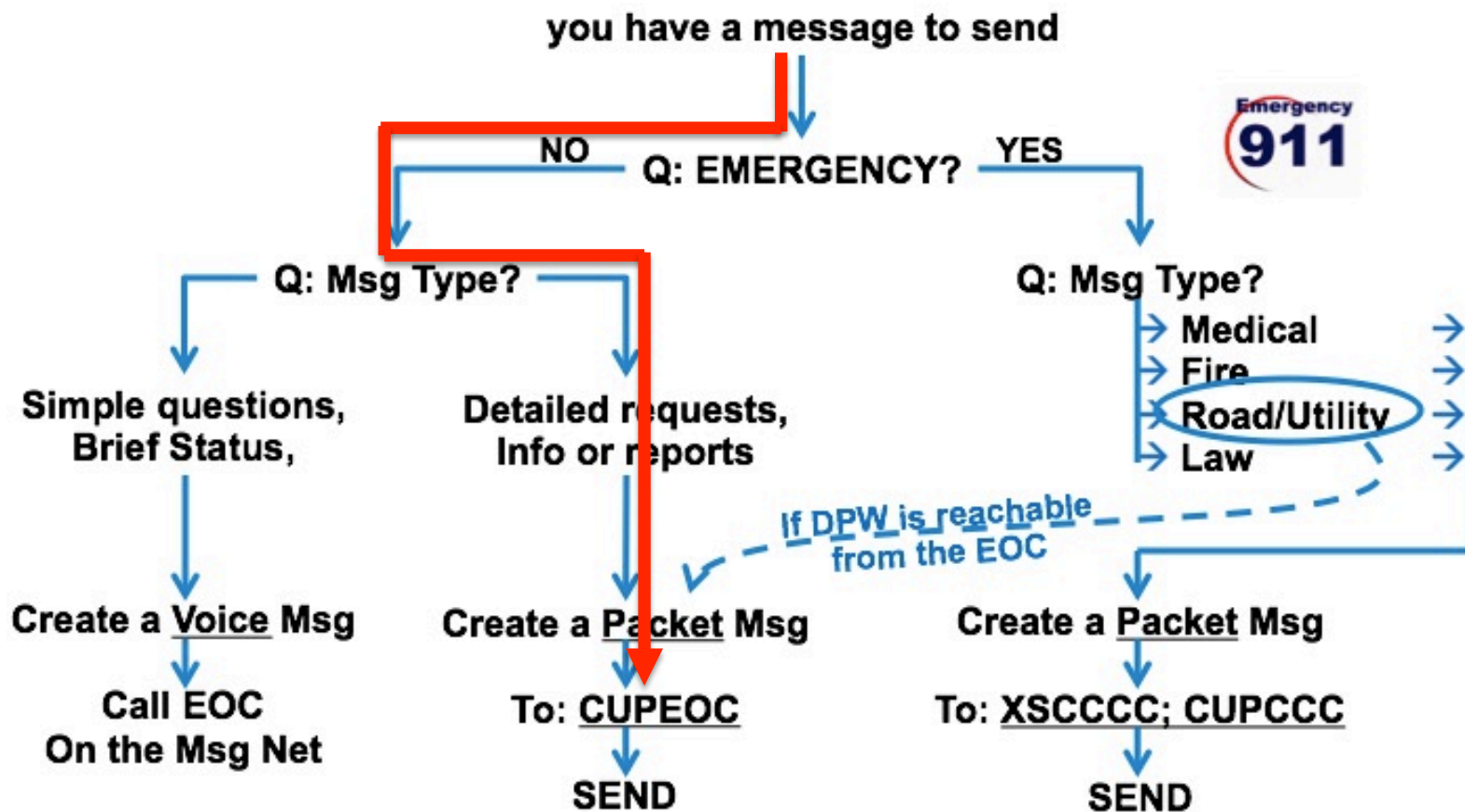
1. Decide how to send it (type of message)
2. Get the message ready to send
3. Make sure you are ready to send it

After you send the message

1. Complete the sending information on the ICS 213 (if used)
2. Log the message on your ICS 309 Communications Log



Decide how to send the message



Bottom Line: Use your Judgement



Message Sending Process

Before you send the message

- ✓ 1. Decide how to send it (type of message)
2. Get the message ready to send
3. Make sure you are ready to send it

After you send the message

1. Complete the sending information on the ICS 213 (if used)
2. Log the message on your ICS 309 Communications Log

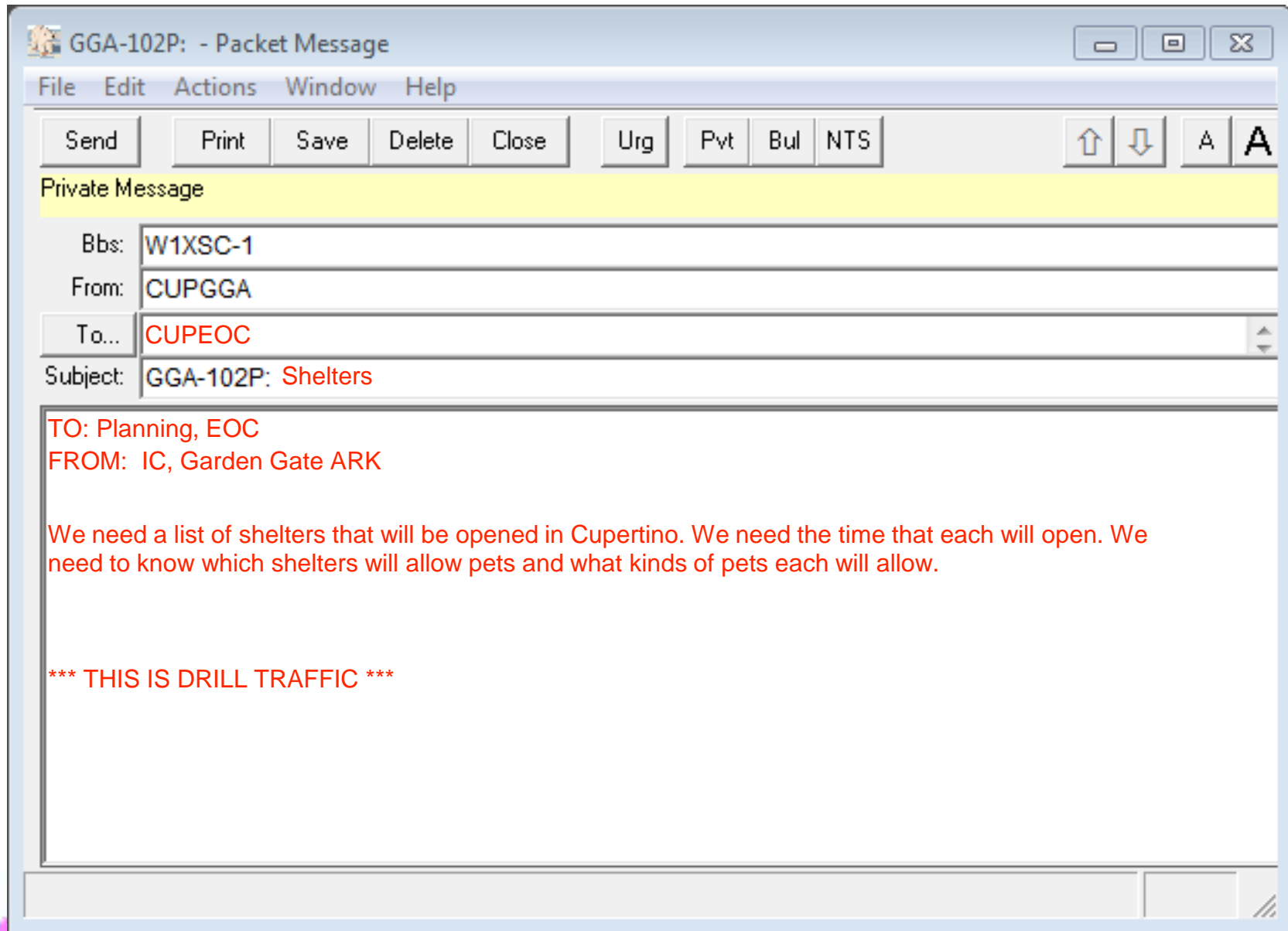


Get the message ready to send

| | | |
|---|---------------------------------|--------------------------|
| 1. Incident Name (Optional): | Priority (E, U, R): <i>R</i> | Message No: |
| 2. To (Name and Position): <i>Planning, EOC</i> | | |
| 3. From (Name and Position): <i>IC, Garden Gate ARK</i> | | |
| 4. Subject: <i>Shelters</i> | 5. Date: <i>11/3/16</i> | 6. Time: <i>20:14</i> |
| 7. Message: <i>We need a list of shelters that will be opened in Cupertino. We need the time that each will open. We need to know which shelters will allow pets and what kinds of pets each will allow.</i> | | |
| 8. Approved by: Name <i>Susie Someone</i> Signature: <i>Susie Someone</i> Position/Title: <i>IC</i> | | |
| 9. Reply: | | |



Get the message ready to send



Message Sending Process

Before you send the message

- ✓ 1. Decide how to send it (type of message)
- ✓ 2. Get the message ready to send
- ✓ 3. Make sure you are ready to send it

After you send the message

1. Complete the sending information on the ICS 213 (if used)
2. Log the message on your ICS 309 Communications Log



Complete the sending information

Sent by packet

| | | |
|---|---------------------------------|--------------------------------|
| 1. Incident Name (Optional): | Priority (E, U, R): <i>R</i> | Message No: <i>GGA-102P</i> |
| 2. To (Name and Position): <i>Planning, EOC</i> | | |
| 3. From (Name and Position): <i>IC, Garden Gate ARK</i> | | |
| 4. Subject: <i>Shelters</i> | 5. Date: <i>11/3/16</i> | 6. Time: <i>20:14</i> |
| 7. Message: <i>We need a list of shelters that will be opened in Cupertino. We need the time that each will open. We need to know which shelters will allow pets and what kinds of pets each will allow.</i> | | |
| 8. Approved by: Name <i>Susie Someone</i> Signature: <i>Susie Someone</i> Position/Title: <i>IC</i> | | |
| 9. Reply: | | |
| 10. Replied by: Name COES 213 | Signature: _____ Date/Time: | Position/Title: |



Message Sending Process

Before you send the message

- ✓ 1. Decide how to send it (type of message)
- ✓ 2. Get the message ready to send
- ✓ 3. Make sure you are ready to send it

After you send the message

- ✓ 1. Complete the sending information on the ICS 213 (if used)
- ✓ 2. Log the message on your ICS 309 Communications Log
Outpost will create the entry for the 309



Later...

The IC asks us to report that a tree is down and completing blocking the intersection of Stevens Creek Boulevard and Stelling Road

Before you send the message

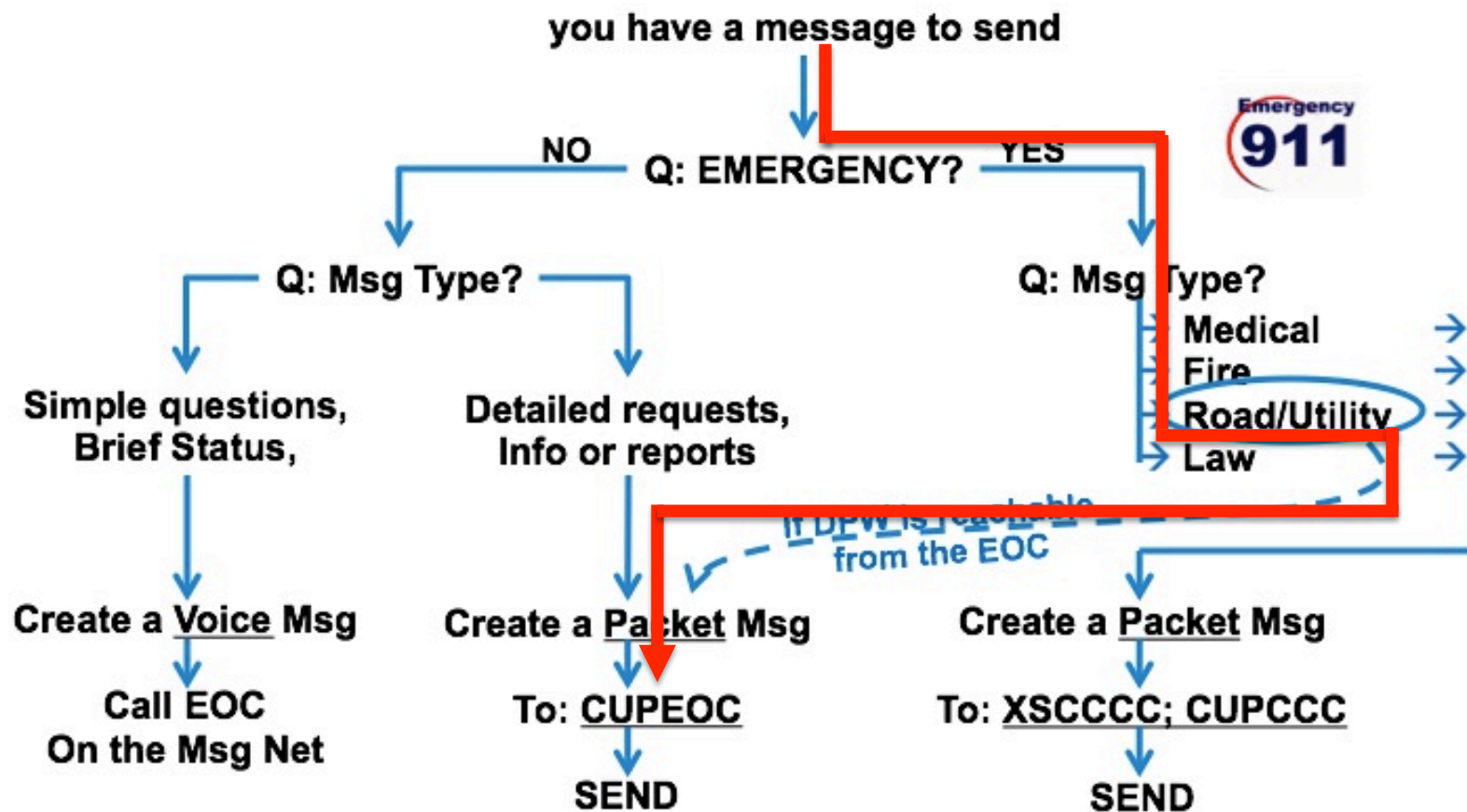
1. Decide how to send it (type of message)
2. Get the message ready to send
3. Make sure you are ready to send it

After you send the message

1. Complete the sending information on the ICS 213 (if used)
2. Log the message on your ICS 309 Communications Log



Decide how to send the message



Bottom Line: Use your Judgement



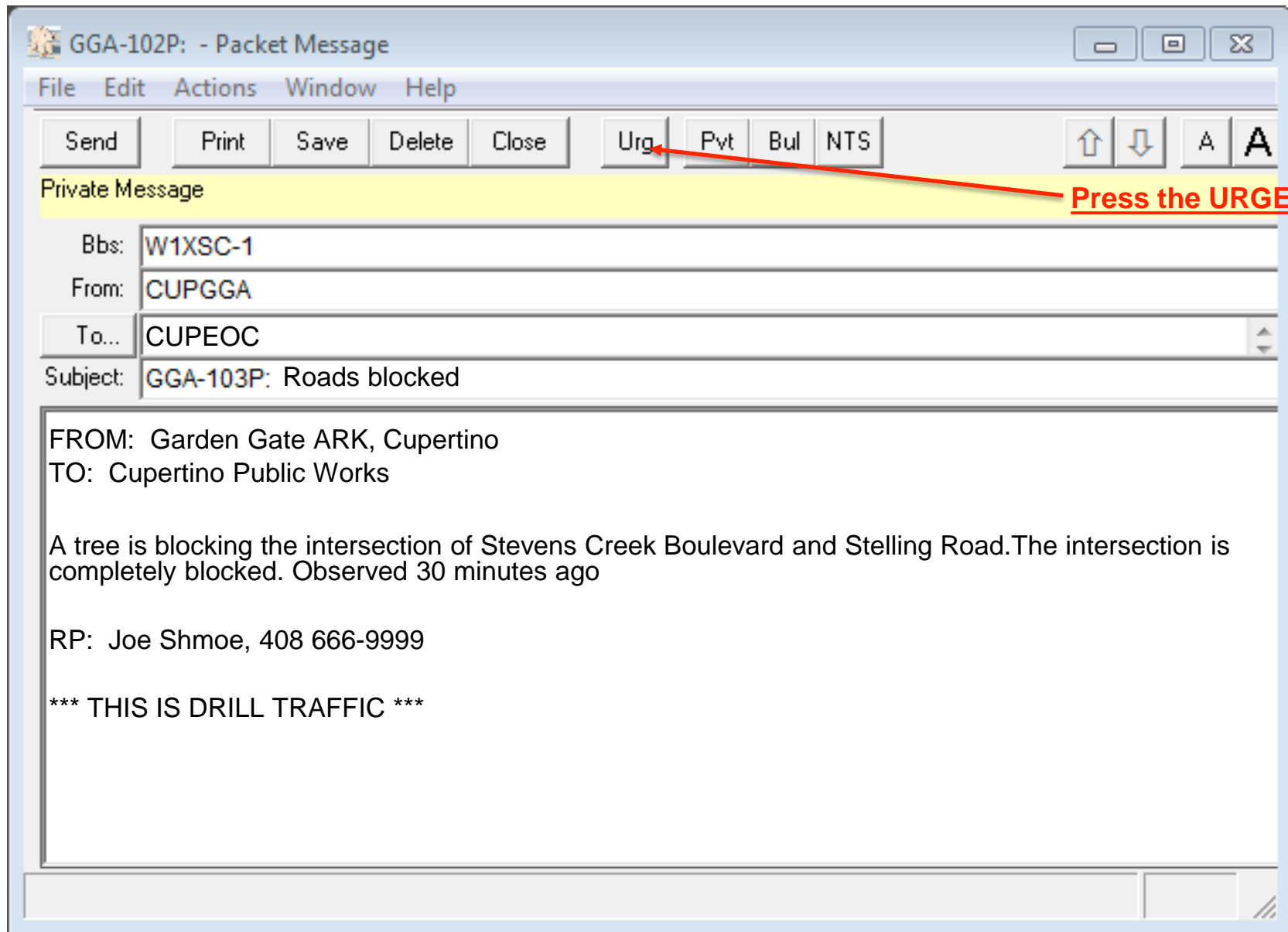
Road or Utility Emergency

What information do you need to include?

- Type of problem (e.g., tree/pole down, water main break)
- What is happening now (e.g., road is blocked, power line arcing, street flooding)
- How long ago did you observe the problem or when did it occur?
- Location (address, cross street) — include the city!
- Reporting party's name, contact phone number



Get the message ready to send



Press the URGENT button

Message Sending Process

Before you send the message

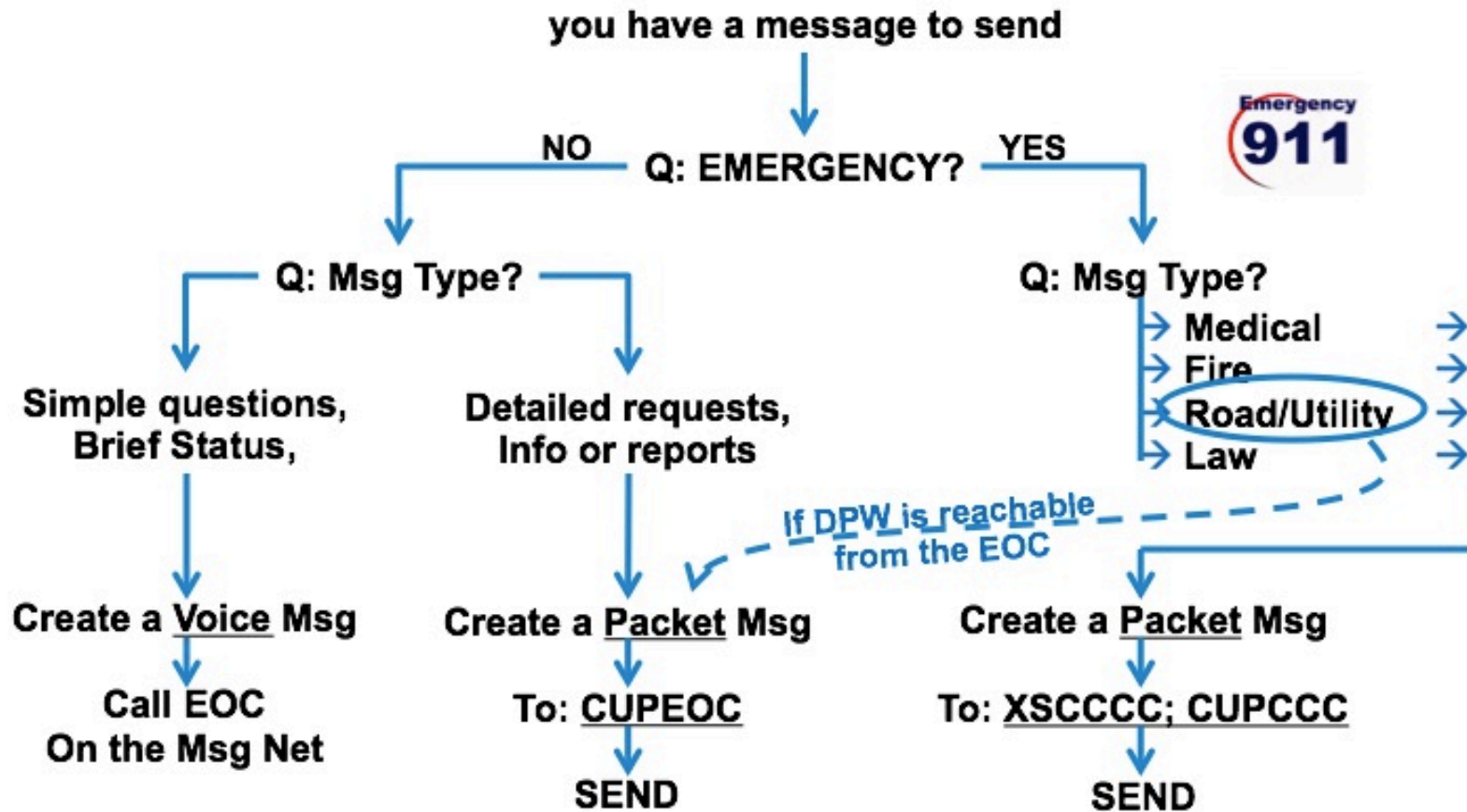
- ✓ 1. Decide how to send it (type of message)
- ✓ 2. Get the message ready to send
- ✓ 3. Make sure you are ready to send it
 - Is Outpost configured correctly?
 - Is the radio set to the correct frequency?

After you send the message

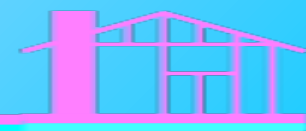
- ✓ 1. Complete the sending information on the ICS 213 (if used)
- ✓ 2. Log the message on your ICS 309 Communications Log
 - Outpost will create the entry for the 309



More types of messages



Bottom Line: Use your Judgement





More 911 messages

Fire Emergency

What information do you need to include?

- What is burning (e.g., car, building)
- Are there any people inside
- What is happening now (e.g., everyone is safe/trapped, heavy smoke)
- How long ago was the reporting party at the fire or when did he/she make these observations
- Location (address) — include the city!
- Reporting party's name, contact phone number





More 911 messages

Law Emergency

What information do you need to include?

- Type of problem (e.g., suspicious person, fight, accident, break-in)
- What is happening now (e.g., suspicious car on street, heard broken glass)
- How long ago or when did the reporting party see this
- Location (address) — include the city!
- Reporting party's name, contact phone number

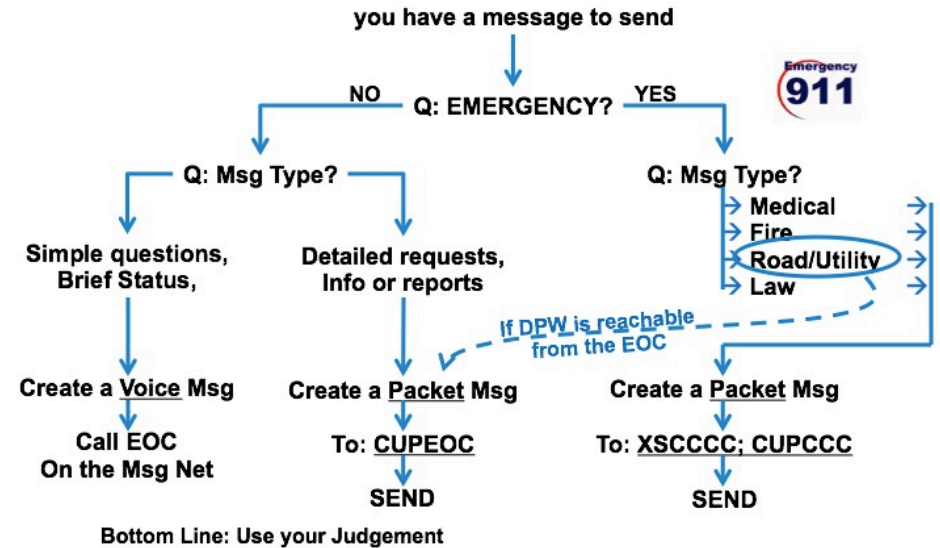


Summary

Guidelines

Before you send the message

1. Decide how to send it
(type of message)



2. Get the message ready to send
3. Make sure you are ready to send it

After you send the message

1. Complete the sending information on the ICS 213 (if used)
2. Log the message on your ICS 309 Communications Log





Summary

There's no substitute for...

Use your best judgement

