

# 2018 Wildland Fire Communications Drill Prep

May 3, 2018  
Jim Oberhofer



# Agenda

---

1. Drill introduction – what's the plan?
2. Our 12-May scenario
3. What's our assignment
4. Spotting
5. Cross-band repeater
6. Message Handling refresher



# Wildland Fire Drill Introduction

Wildland Fire Scenario, May 12, 2018

---

## Objectives

1. Exercise resource net concepts and procedures.
2. Exercise message net concepts and procedures.
3. Exercise emergency voice and packet communications message handling procedures.
4. Test deployment of a Cross-band repeater
5. Test City-wide coverage from Comm 469
6. Test the activation procedure



# Wildland Fire Drill Introduction

Wildland Fire Scenario, May 12, 2018

---

## Concept

This will be a communications functional exercise based on a wildland fire event that indirectly threatening the City.

1. The drill will occur over a 4 hour period on Saturday May 12, 2018.
2. The City EOC will be activated with minimal (if any) City staff; the CCC DOC will simulate the EOC response as necessary.
3. Field responders will be deployed to a limited number of ARKs specific to the scenario. Participating ARKs will be activated to ARK Activation Level 2.
4. Communications assignments are made based on the CARES response model, resources, and priority.
5. Non-CARES Buddies will be encouraged.
6. Field message traffic will be based on timed scripted messages and simulated interactions with other responders.
7. Simulated OpArea traffic will be developed and sent to County with an SCC RACES resource to simulate radio interactions (voice, packet)

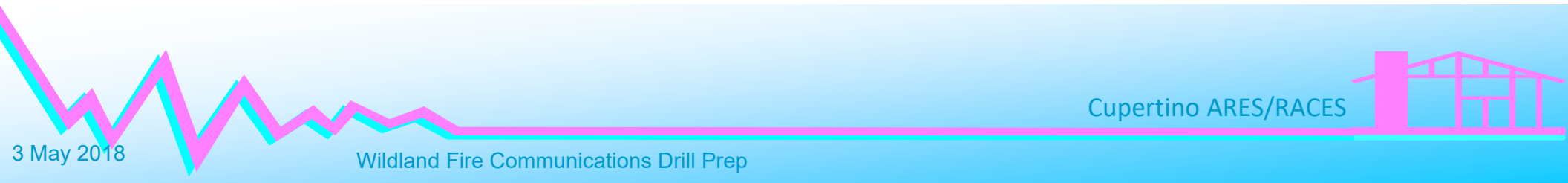


# 2018 Wildland Fire Drill

---

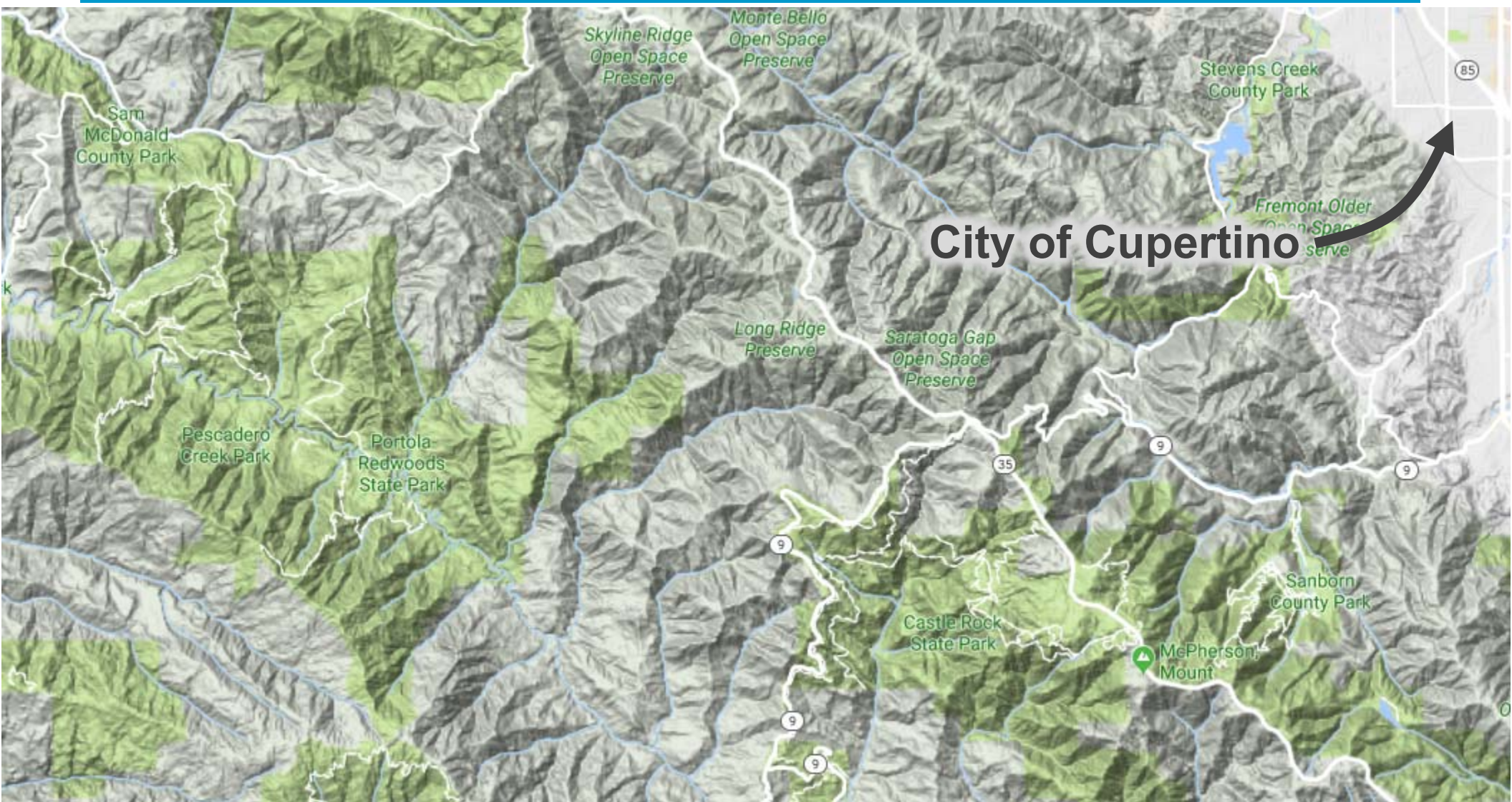
**\*\*\* THIS IS DRILL TRAFFIC \*\***

The City is threatened by a wildland fire approaching from the Southwest.





# Setting the scene



Cupertino ARES/RACES

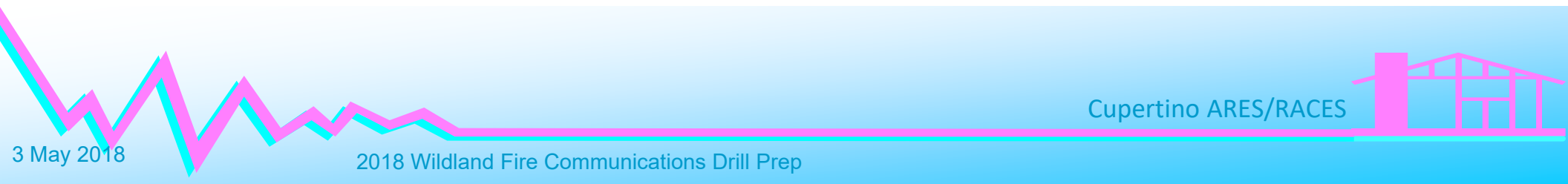
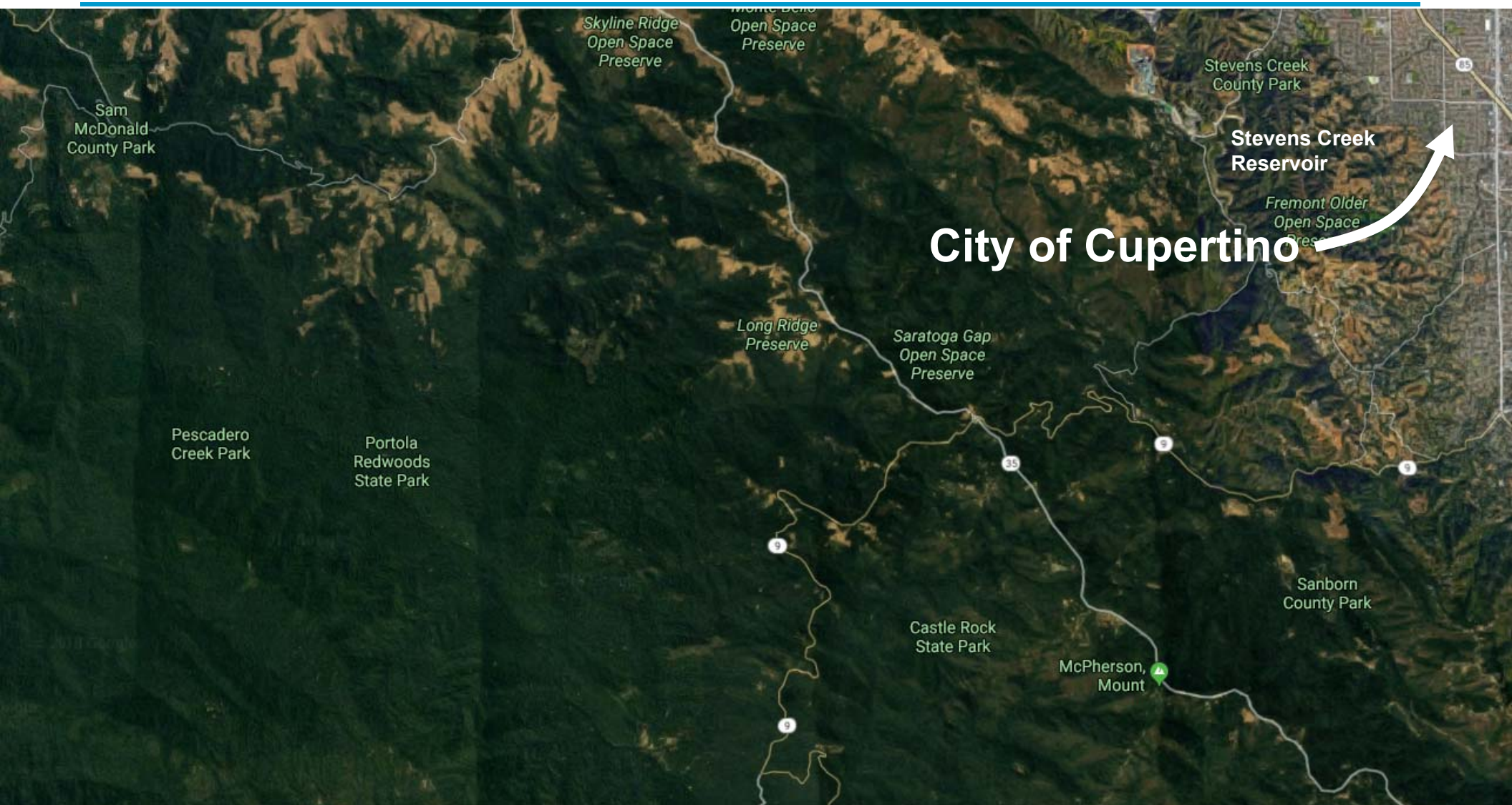


3 May 2018

2018 Wildland Fire Communications Drill Prep



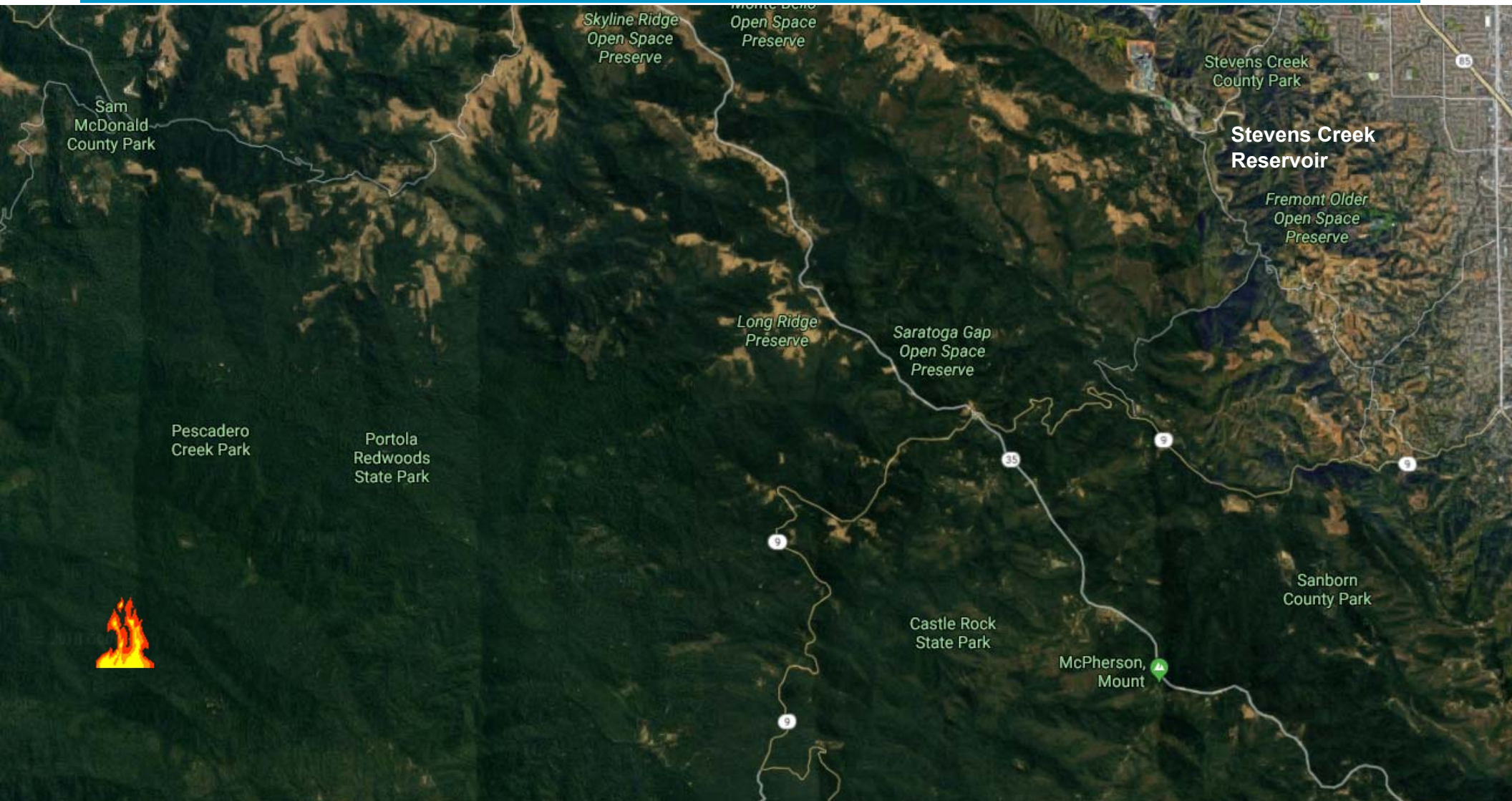
# Setting the scene





# Tuesday Night

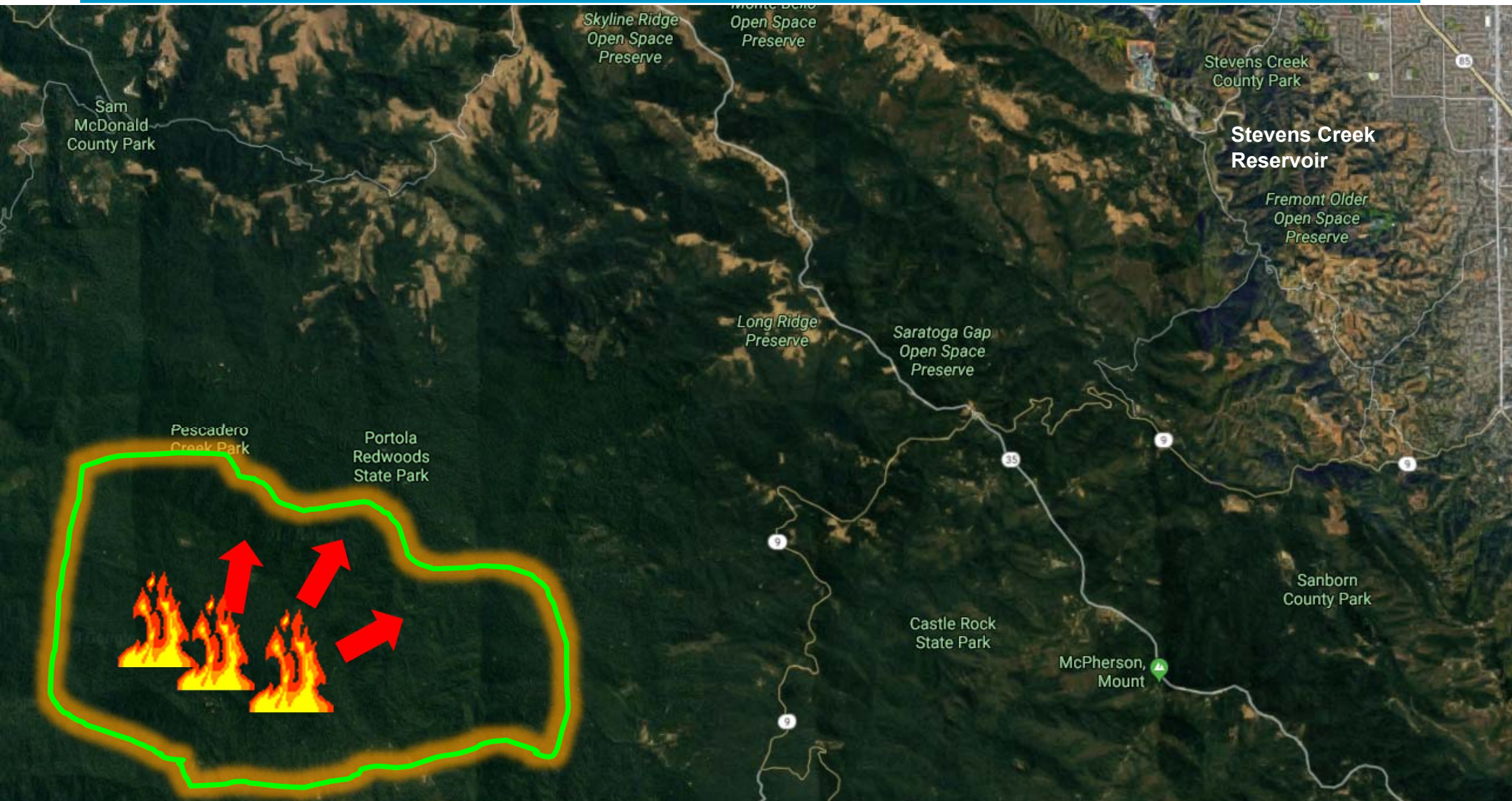
## Fire Starts on the South Butano Truck Trail





# Wednesday

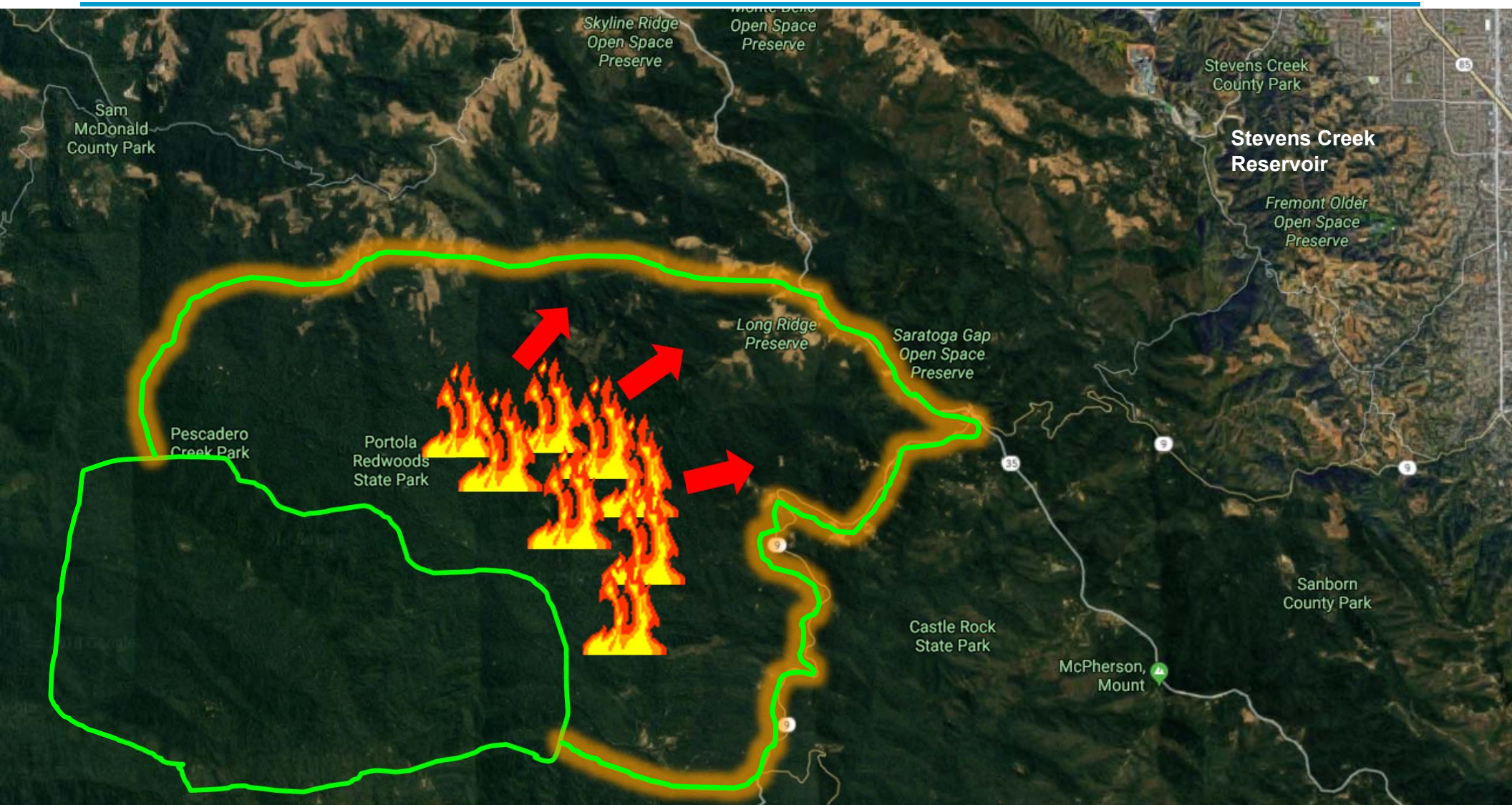
## CAL FIRE works for containment SW of Portola Redwoods State Park





# Thursday

## Fire pushes toward Skyline Blvd (Rt 35)



Cupertino ARES/RACES



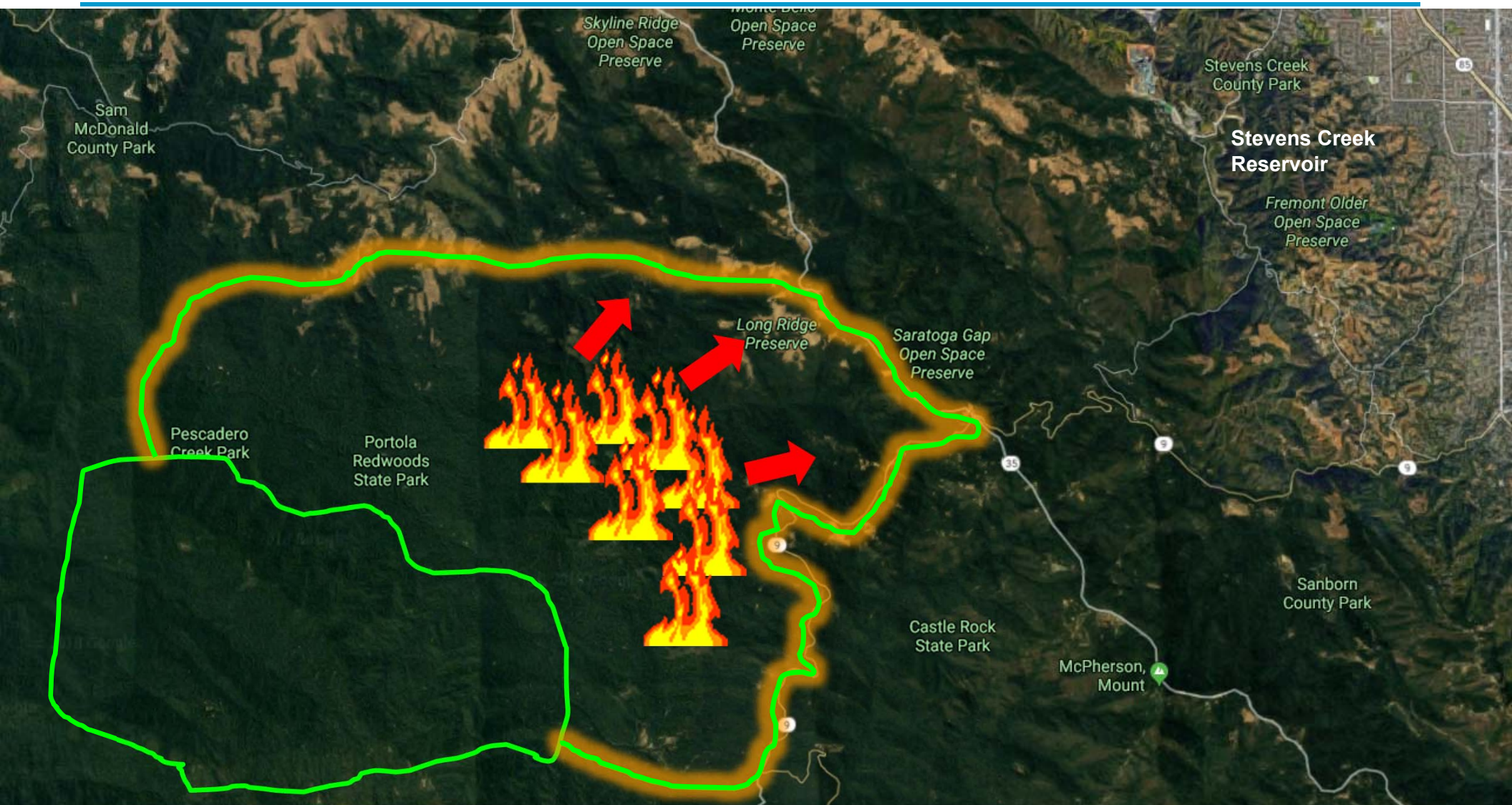
3 May 2018

Wildland Fire Communications Drill Prep



# Friday

## Fire slowed last night but continued toward Skyline Blvd (Rt 35)



Cupertino ARES/RACES



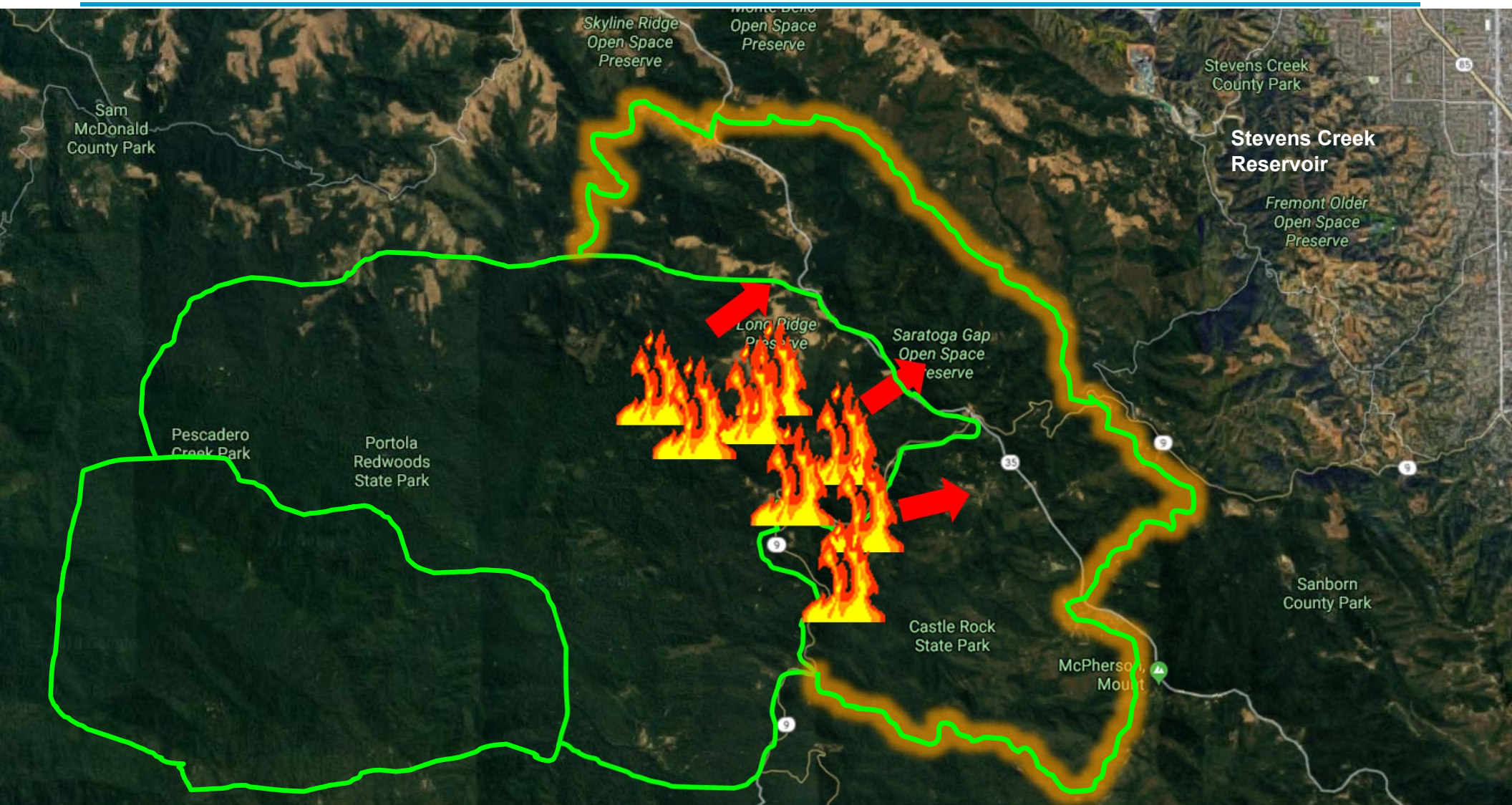
3 May 2018

Wildland Fire Communications Drill Prep



# Saturday 06:00

Forecast: southwest winds will pick up and cause the fire to jump Rt 35

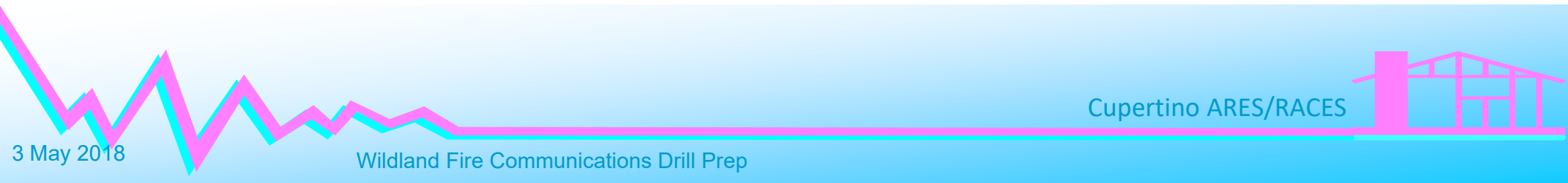


# Weather Conditions

## Wildland Fire Scenario

---

1. Weather conditions are clear; winds are out of the Southwest.



Cupertino ARES/RACES

3 May 2018

Wildland Fire Communications Drill Prep

# Who are the players?

## Wildland Fire Scenario

---

<b>CAL FIRE</b>	<ul style="list-style-type: none"><li>• Responds to fires on public lands, the water shed, and privately-owned wildlands</li></ul>
<b>County Fire</b>	<ul style="list-style-type: none"><li>• Mutual Aid to CAL FIRE</li><li>• Responds to fires within their jurisdiction</li><li>• Responds to medical emergencies</li></ul>
<b>County Sheriff</b>	<ul style="list-style-type: none"><li>• Maintains law and order</li><li>• Handles traffic control, road closures, evacuations</li></ul>
<b>Public Health</b>	<ul style="list-style-type: none"><li>• Monitors air quality</li></ul>
<b>Cupertino EOC</b>	<ul style="list-style-type: none"><li>• Staffs the EOC, monitors the situation</li><li>• Provides community information</li><li>• Makes decisions that serve the best interest of its residents</li><li>• Supports the fire suppression effort with material, logistical support, and resources as necessary</li></ul>
<b>Citizen Corp</b>	<ul style="list-style-type: none"><li>• Provides CERT, medical, and communications resources as needed to support the City and its served agencies</li></ul>



# What does the City need?

## Wildland Fire Scenario

What they need	What it includes	How do they get it
<b>Understand the situation outside the city</b>	<ul style="list-style-type: none"><li>• Threat assessment; fire location, speed and direction</li><li>• Weather conditions, field conditions, extended weather forecast</li><li>• Mitigation plans</li></ul>	<ul style="list-style-type: none"><li>• SCCFD, CAL FIRE briefings</li><li>• City Agency Reps at the Fire ICP</li><li>• National Weather Service</li><li>• Monitor CAL FIRE, SCCFD radio frequencies</li><li>• Commercial news outlets</li></ul>
<b>Know the conditions in Cupertino</b>	<ul style="list-style-type: none"><li>• Smoke, embers, fire starts</li><li>• Traffic conditions on city streets</li><li>• Evacuations, street closures, shelter status, animal evacuations</li><li>• Community welfare</li></ul>	<ul style="list-style-type: none"><li>• County Sheriff &amp; Fire</li><li>• Observations and reports from CCC in the field</li><li>• Resident phone-in reports</li><li>• Social media</li></ul>

# CARES Response – what we generally do

## Wildland Fire Scenario

---

1. Preliminary Safety Assessment	CARES collects and reports information about the state of the city immediately after a city-wide emergency or disaster occurred.
2. Field Response	CARES members respond and operate at a field assignment during a declared emergency.
3. Infrastructure Safety Assessment	CARES observes and reports on selected Cupertino critical facilities that are deemed to be important to the City or other Agencies.
4. EOC Support	<ul style="list-style-type: none"><li>• Staff the Comm Van / Radio Room</li><li>• Provide situation roll-up of field reports</li></ul>



# CARES Response – what we would do in this case

## Wildland Fire Scenario

---

1. Preliminary Safety Assessment	CARES collects and reports information about the state of the city immediately after a city-wide emergency or disaster occurred.
2. Field Response	<p>CARES members respond and operate at a field assignment during a declared emergency.</p> <ul style="list-style-type: none"><li>• Ember watch, patrols</li><li>• Shadows (Sheriff, City Agency Reps, County Fire, CAL FIRE, City officials, others)</li><li>• Shelter communications</li></ul>
3. Infrastructure Safety Assessment	CARES observes and reports on selected Cupertino critical facilities that are deemed to be important to the City or other Agencies.
4. EOC Support	<ul style="list-style-type: none"><li>• Staff the Comm Van / Radio Room</li><li>• Provide situation roll-up of field reports</li></ul>





# Ember Watch – what is it?

---

## ***definition:*** ember watch

1. A field assignment where lookouts are stationed at elevated locations to view an area of interest; the task is to watch for and report possible fires that may arise from air-borne ember drops.
2. This can also be implemented as an Ember Patrol, where the observations are made from a vehicle.
3. Responders are looking for...
  - i. first signs of smoke as an early indicator of a fire, and
  - ii. signs of air-borne embers.
4. Reports are passed to the City EOC.



# Smoke... what to look for

Ember Watch – what is it?

---

**definition:** smoke, described in terms of color, thickness, and vertical rise.

1. Color: can indicate the temperature.

- **Light Smoke**

- Indicates the fire is just starting, or is burning light or damp fuels.
- This smoke tends to reflect light, making the smoke look white.
- As long as the fire gets lots of oxygen, the smoke stays light in color.

- **Dark or Black Smoke**

- Indicates a hotter fire.
- The fire does not get enough oxygen, thereby produces smoke that contains a lot of unburned particles that absorb light.
- A column of smoke, especially dark smoke, indicates a high potential for the fire to grow.

2. Thickness: Light, Medium, Heavy

3. Vertical Rise: in columns, drifting, blowing, leaning



# Smoke... what to look for

Ember Watch – what is it?

---

## Grass fire on I-10



Cupertino ARES/RACES



# Smoke... what to look for

Ember Watch – what is it?

---

## Brush Fire





# Embers... what to look for

Ember Watch – what is it?

---

## ***definition:*** Ember

1. A glowing, hot coal made of greatly heated wood, coal, or other carbon-based material that remains after, or sometimes precedes, a fire.
2. Blowing embers are tough to detect during the day, and may be more visible against a dark sky.



# Santana Row Fire Facts, 2002

## Ember Watch – what is it?

---

1. The Santana Row fire first was reported at 3:36 p.m., Aug. 19, 2002.
2. The fire went to 11 alarms and caused more than \$100 million in damage.
3. It took a combined effort of 221 firefighters and 65 pieces of apparatus to put it out.
4. Crate & Barrel already opened, was upwind of the blaze, and was spared. Other shops on the verge of completion were consumed by the flames.
5. 9-1-1 calls were received reporting roof fires approximately 1/2 to 1 mile south of the fire.
6. Flying embers, some as large as two-by-fours, continued to ignite buildings in the area, including the Moorpark Garden Apartments and several townhouses at the Moorpark Village complex; more than 30 apartments and townhouses in the Moorpark neighborhood across I-280 were impacted, causing \$2.5 million in damage.
7. It was ***the largest*** structure fire in San Jose's history.



# Tubbs Fire, October 8, 2017

Ember Watch – what is it?



# Tubbs Fire, October 8, 2017

---

## A look at the details

- Dates: Oct 8<sup>th</sup> to Oct 31<sup>st</sup>
- Burned: 36,800 acres
- Destroyed: 5,643 structures, including 2,900 homes
- Fatalities: 43
- Cost: \$1.2 billion
- Cause: Under investigation (Sonoma County emergency dispatchers sent fire crews to at least 10 reports of downed power lines and exploding transformers, caused by high winds as the fire began)

## Takeaway's... we will have problems if we have

- Winds, and
- fuel load, and
- Low moisture content

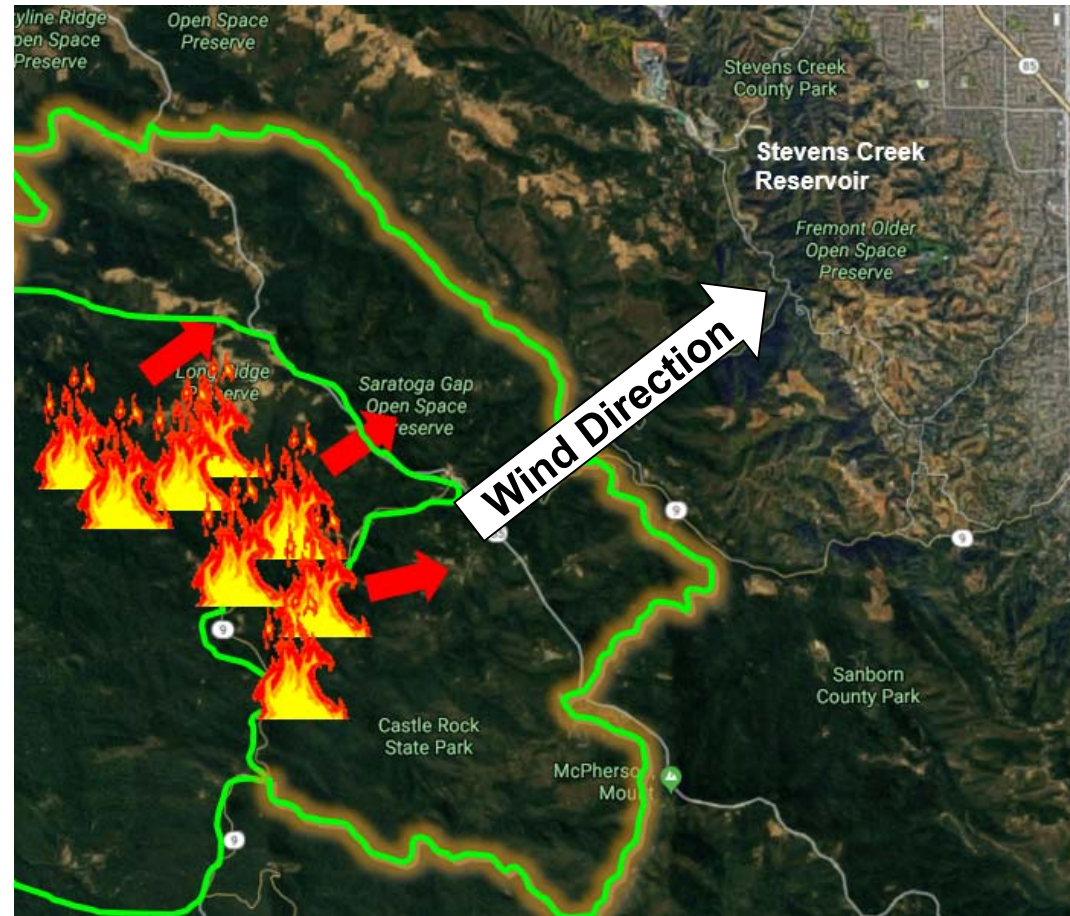




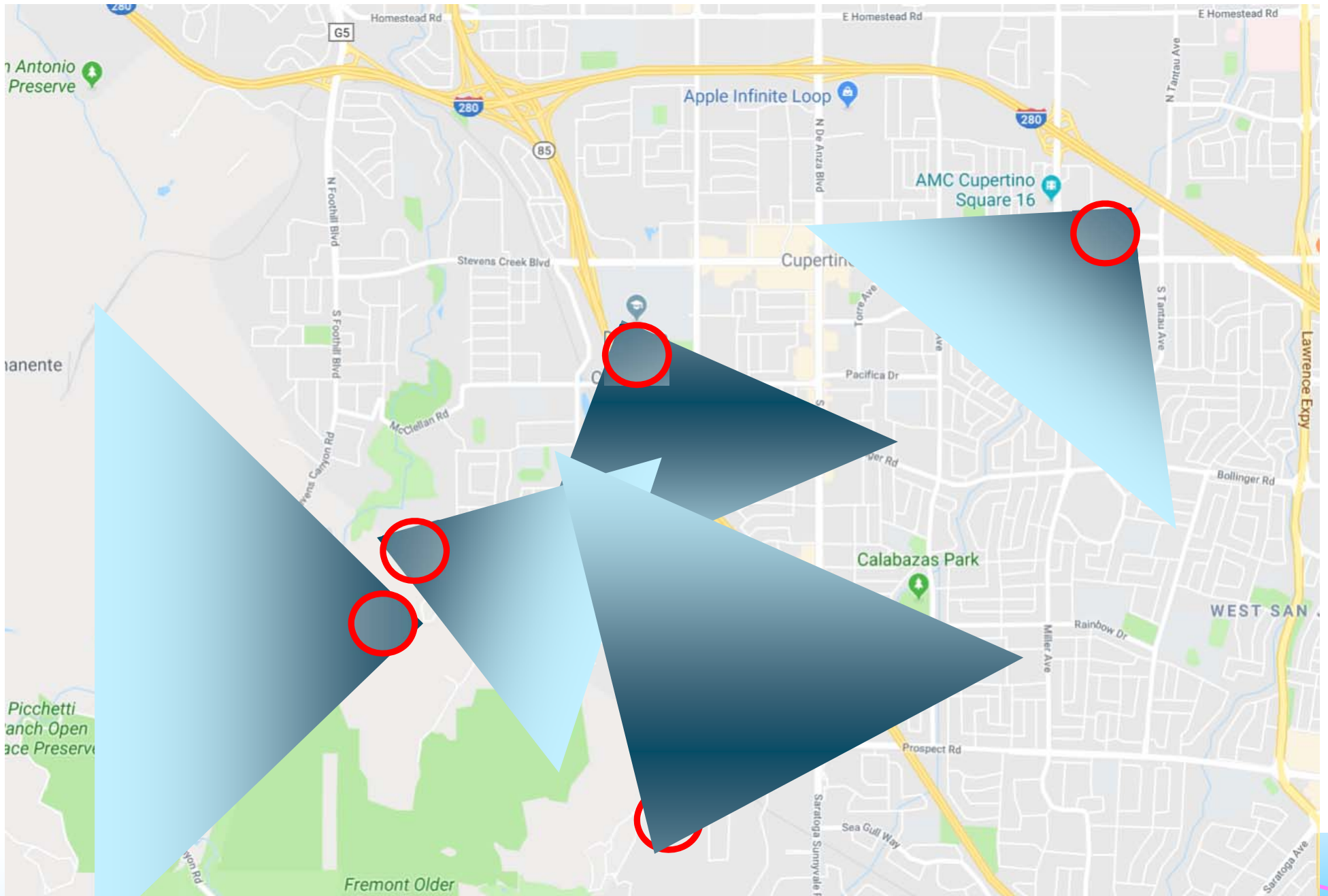
# Embers... what to look for

Ember Watch – what is it?

With the right wind conditions (that we will have for the drill), and the fire closing in on the City, there could be some hot embers dropping on the City and igniting fires.



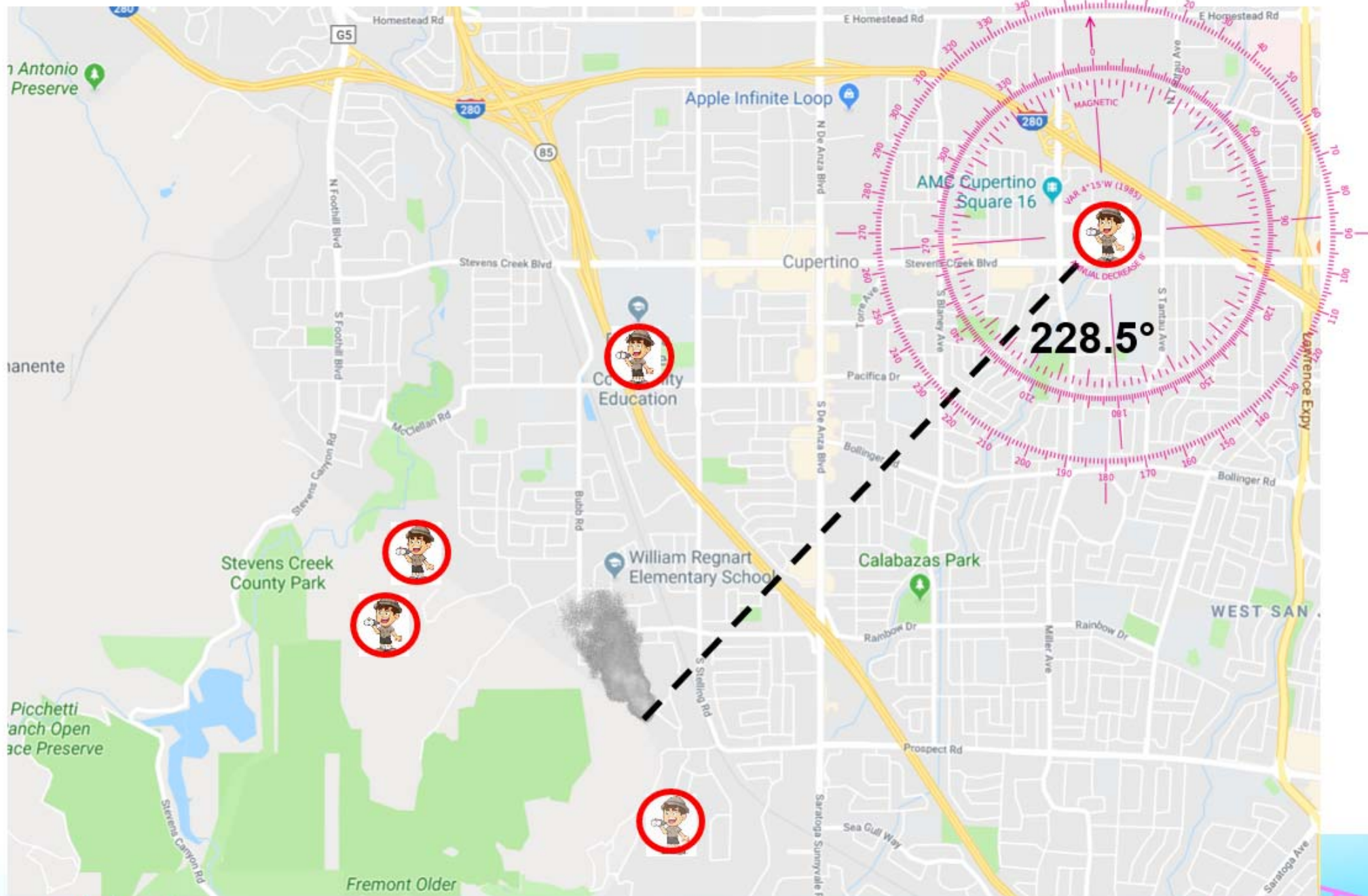
# Ember watch assignment



Cupertino ARES/RACES



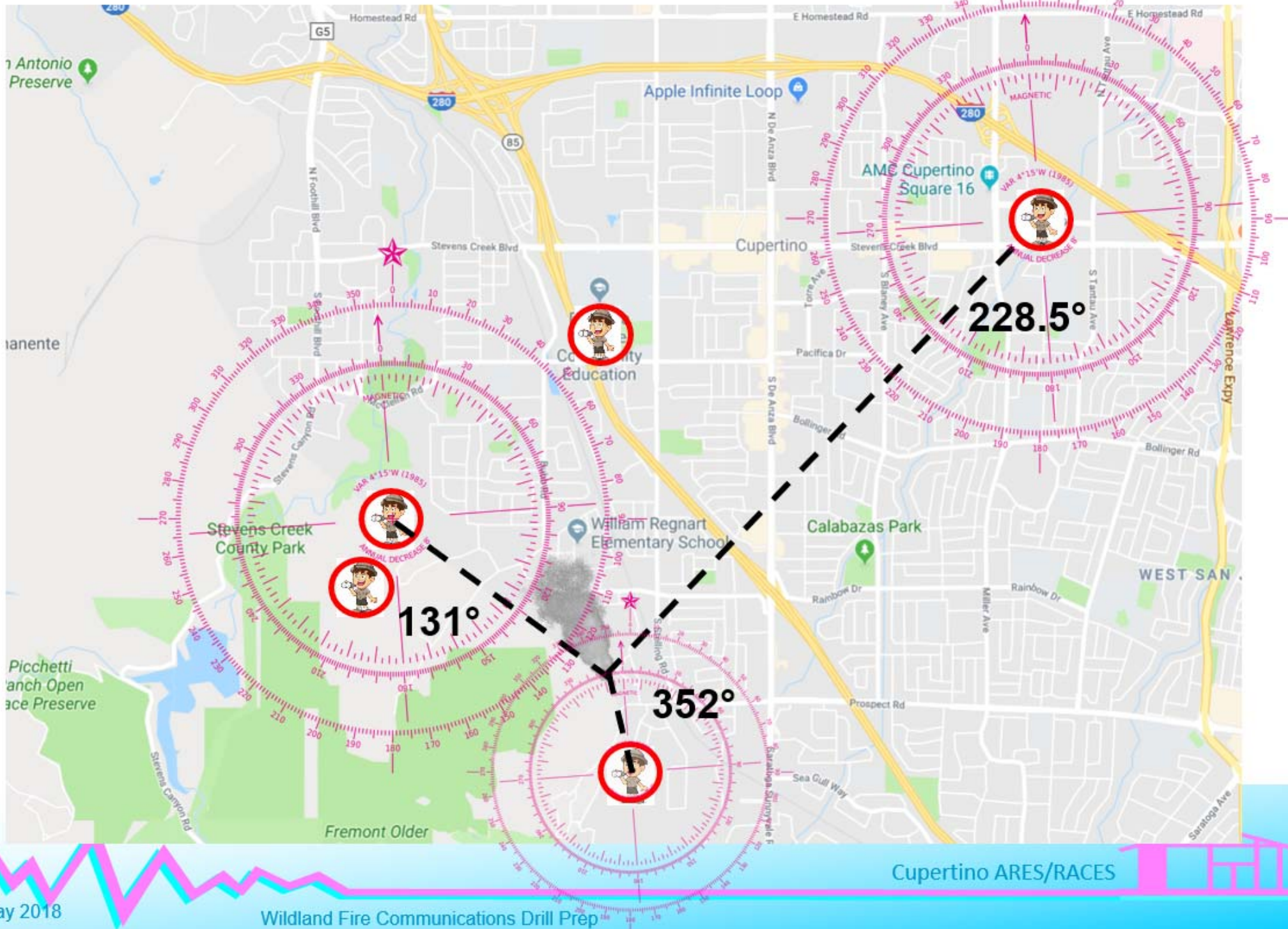
# Ember watch assignment



Cupertino ARES/RACES



## Ember watch assignment





# Making a Smoke Report

## Collecting your observations

---

### Getting ready to make a report...

1. Your location (Tactical Call)
2. Bearing to the smoke (in degrees)
3. Size of the smoke (Small, Medium, Large)
4. Color of the smoke (white, gray, black, yellow, other)
5. Other optional information to pass if you can tell...
  - a) Direction the smoke is blowing
  - b) If you see flames
  - c) If it is a structure or vegetation fire
  - d) If you can approximate the distance from your location



# Making a Smoke Report

Recording your observations

---

Getting ready to make a report...

## SMOKE REPORT

Message Number: <b>31</b>		Location (Tactical Call Sign, usually): <b>Main Street</b>
Bearing: <b>228.5</b> degrees	Is it a column?: (circle one) yes <input type="radio"/> no <input checked="" type="radio"/>	Size: (circle one) small <input type="radio"/> <b>medium</b> <input checked="" type="radio"/> large
Color: (circle one) white <input type="radio"/> <b>gray</b> <input checked="" type="radio"/> black yellow _____		Is it building?: (circle one) <input checked="" type="radio"/> yes <input type="radio"/> no
Other: (optional) <b>Drifting west</b>		

(Circle one) <input checked="" type="radio"/> Sent <input type="radio"/> Received	Date and Time: <b>5/12/18, 10:45</b>	Name and FCC Call Sign: <b>Mike KJ6ABC</b>
--	---	---



# Message Handling

What it sounds like - *Sending a Smoke Report*

---

**KJ6ABC:** “Net Control, this is Main Street with a Smoke Report for the EOC”

**NCS:** *Main Street acknowledged. EOC, are you ready to copy a Smoke Report?*

**EOC:** “EOC is ready”

**NCS:** *Main Street, your message number is 31. Send your traffic to the EOC.*

**KJ6ABC:** “EOC, This is Main Street with a Smoke Report, message #31. Break”

**EOC:** “OK, Continue”

**KJ6ABC:** “Bearing is figures 2 2 8 decimal 5. Column is NO. Size is Medium. Break”

**EOC:** “OK, Continue”

**KJ6ABC:** “Color is Gray. Building is YES. Break”

**EOC:** “OK, Continue”

**KJ6ABC:** “Other is Drifting west. End of Message. This is KJ6ABC”

**EOC:** “Acknowledged. This is EOC, K6FJC back to net.”

**NCS:** *This is KK6FPI, Net Control for the Cupertino Emergency Net.  
Other stations with any traffic, please identify now.*





# Message Handling

## Three types of messages

---

### *1. Third party traffic*

- Passed on behalf of a 3<sup>rd</sup> party; an official, traceable message
- *However*, if it is not clear to you, it may not be clear to the EOC. It's Ok to coach the originator and suggest clarity. But, it ultimately must be the originator's message.

### **2. Information / Observations / Reports**

- Self-originated messages
- These messages may not be written and a written response may not be required. In this case, you control what the message text will be. When in doubt, write it down anyway.

### *3. Administrative traffic*

- Can be a question to the NCO, Shift Supervisor, or other station, such as requesting a relief, inquiry on meals, requests for a station to meet you on a TAC-3, etc.



# Message Handling

Three types of messages

---

## ***2. Information / Observations / Reports***

- Self-originated messages

### ***Examples:***

Net Control, this is KN6PE with a ***PSA Report***

Net Control, this is Team 2 with an ***ISA Report***

Net Control, this is Main Street with a ***Smoke Report***

Net Control, this is DeAnza ARK with ***Urgent Traffic*** for the ***EOC***

Net Control, this is Hyde ARK with ***Routine Traffic*** for the ***DOC***



# Message Handling

## Three types of messages

---



### **1. *Third party traffic***

- Passed on behalf of a 3<sup>rd</sup> party; an official, traceable message
- *However*, if it is not clear to you, it may not be clear to the EOC. It's Ok to coach the originator and suggest clarity. But, it ultimately must be the originator's message.

### **2. *Information / Observation / Reports***

- Self-originated messages
- These messages may not be written and a written response may not be required. In this case, you control what the message text will be. When in doubt, write it down anyway.

### **3. *Administrative traffic***

- Can be a question to the NCO, Shift Supervisor, or other station, such as requesting a relief, inquiry on meals, requests for a station to meet you on a TAC-3, etc.





# Message Handling

Three types of messages

---

## 1. *Third party traffic*

- Passed on behalf of a 3<sup>rd</sup> party; an official, traceable message

### *Example:*

Net Control, Regnart ARK with a **Routine** Message for **Monta Vista ARK**

Net Control, this is Sheriff Shadow with **Urgent** Traffic for the **Cupertino PIO**

1. Incident Name (Optional):	Priority <b>E, U, R</b> :	Message No:
2. To (Name and Position): <b>Cupertino PIO</b>		
3. From (Name and Position): <b>Sheriff Liaison</b>		
4. Subject: <b>Evacuation Order</b>	5. Date: <b>5/12/18</b>	6. Time: <b>10:15</b>
7. Message: <b>Request telephone notification to all residents in the vicinity of Stevens Canyon that they must evacuate. Only proceed north on Stevens Canyon Road to exit.</b>		
8. Approved by: Name <b>Mark Richie</b> Signature: <b>M Richie</b> Position/Title: <b>Dep Sheriff</b>		
9. Reply:		



# Message Handling

## Three types of messages

---

### *1. Third party traffic*

- Passed on behalf of a 3<sup>rd</sup> party; an official, traceable message
- *However*, if it is not clear to you, it may not be clear to the EOC. It's Ok to coach the originator and suggest clarity. But, it ultimately must be the originator's message.

### *2. Information / Observations / Reports*

- Self-originated messages
- These messages may not be written and a written response may not be required. In this case, you control what the message text will be. When in doubt, write it down anyway.

### **3. Administrative traffic**

- Can be a question to the NCO, Shift Supervisor, or other station, such as requesting a relief, inquiry on meals, requests for a station to meet you on a TAC-3, etc.



# Message Handling

Three types of messages

---

## ***3. Administrative traffic***

- Can be a question to the NCO, Shift Supervisor, or other station.

### ***Examples:***

Net Control, Main Street; What frequency is the Resource Net on?

Net Control, Base Camp; What time is my relief showing up?

Net Control, Lindy Lane; I need to step away from the radio. I will let you know when I am back.

Net Control, DeAnza Parking; I don't have \$3 for parking. Returning to the EOC.

Net Control, Regnart ARK; permission to go direct to Monta Vista ARK



# Comm Plan

## INCIDENT RADIO COMMUNICATIONS PLAN (ICS 205)

1. Incident Name:

***Butano Fire, CUP-18-35T***

2. Date/Time Prepared:

Date: **5/9/2018, 16:00**  
Time:

3. Operational Period:

Date From: **5/12, 08:00** Date To: **12:00**  
Time From: Time To:

4. Basic Radio Channel Use:

Zone Grp	Ch #	Function	Channel Name Trunked Radio System Talkgroup	Assignment	RX Freq N or W	RX Tone/NAC	TX Freq N or W	TX Tone/NAC	Mode (A, D, or M)	Remarks
	1	Resource Net	VTAC1	CARES	147.570W	none	147.570W	151.4	A	SPLX , T
	2	Message Net	VTAC2	CARES	146.460W	none	146.460W	151.4	A	SPLX , T, <b>XBAND Regnart Ridge</b>
	3	Command	UTAC3	CARES	440.150W	100.0	445.150W	100.0	A	RPTR, W6TDM, el 130'
	4	Alt Tactical	UTAC4	CARES	441.000W	151.4	441.000W	151.4	A	SPLX , CT/TSQL, <b>XBAND Regnart Ridge</b>
	5	Alt Tactical	VTAC5	CARES	147.585W	none	147.585W	151.4	A	SPLX , T, s/w Sunnyvale
	6	Resource Net	VTAC6	CARES	147.570W	151.4	147.570W	151.4	A	SPLX , CT/TSQL
	7	Message Net	VTAC7	CARES	146.460W	151.4	146.460W	151.4	A	SPLX , CT/TSQL
	8	Command	UTAC8	CARES	440.150W	100.0	440.150W	100.0	A	SPLX , CT/TSQL used on repeater failure only
	9	Unassigned	Unassigned							
	10	Alt Tactical	VTAC10	CARES	147.585W	151.4	147.585W	151.4	A	SPLX, LP , CT/TSQL, s/w Sunnyvale

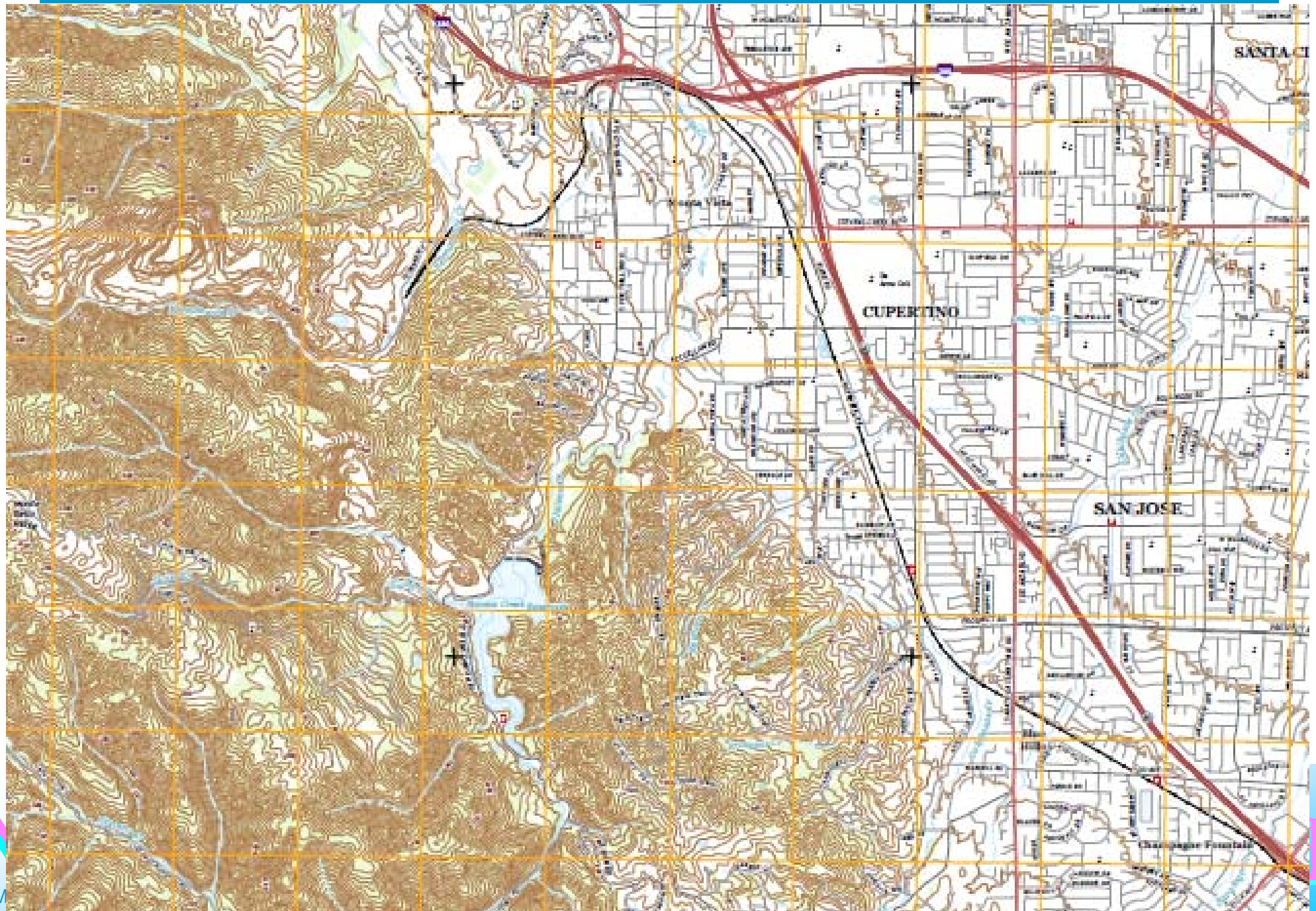
5. Special Instructions:

1. Standing CARES Radio Communications Plan.
2. Abbreviations:
  - CT/TSQL – CTCSS or Tone Squelch (radio-specific)
  - LP – Low Power
  - RPTR – Repeater
  - SPLX – Simplex
  - T – TX Tone only

6. Prepared By:

# What about the dead spots?

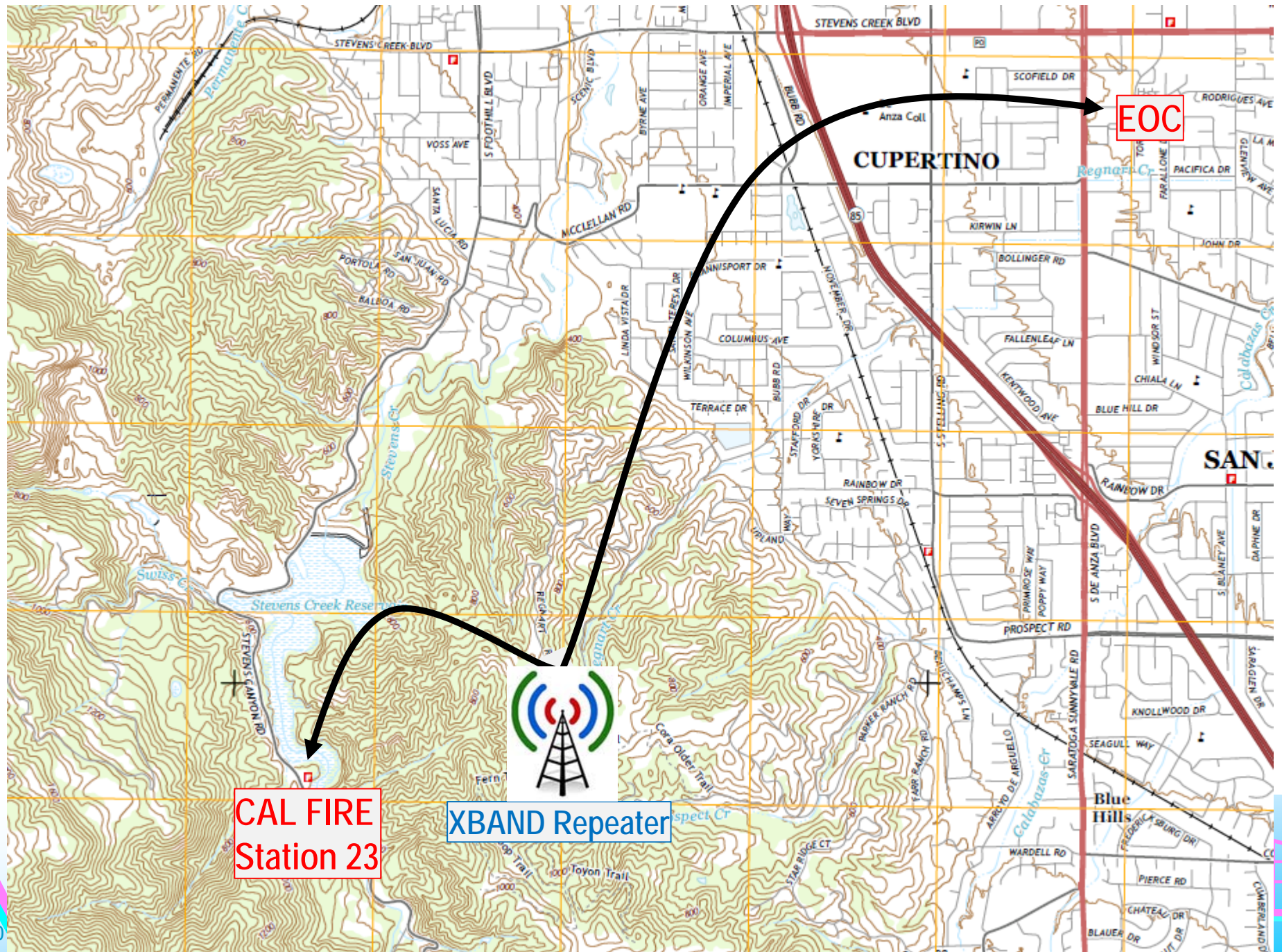
## Communications Plan





# What about the dead spots?

## Communications Plan





# Deploying the Cross-Band Repeater

## Communications Plan

---

### The Kit

1. Battery, 12VDC, 35Ah
2. Radio: Kenwood TM-V71
  1. 2M Frequency TAC 2, 146.460, T=151.4
  2. 440 Frequency: TAC 4, 441.000 CT=151.4
  3. Power: 10W each channel
  4. Station ID: K6KP
3. Antenna: 2m/440 dual band, on a portable mast

### The Plan

1. Set up on Regnart Heights (SJW-T11)



# Timeline

## Wildland Fire Scenario

---

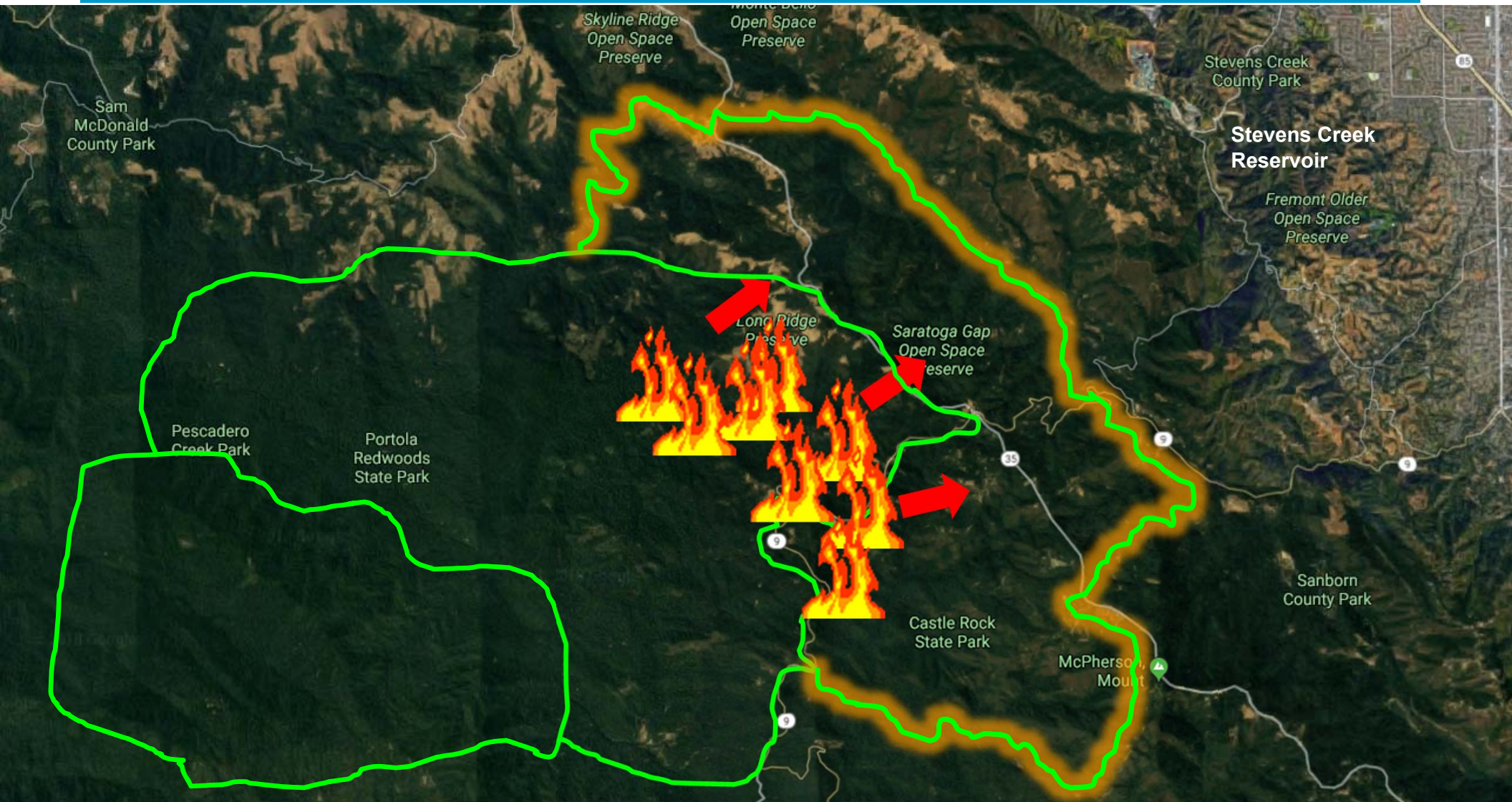
### Friday

- 9:00am – The City Manager receives a briefing from County Fire on the situation.
- 10:00am – The City EOC is activated with minimal staffing primarily to monitor the situation.
- Santa Clara County OES activates; requests the Red Cross to open a shelter in the event evacuations are required.
- The Cupertino PIO puts messages on Radio Cupertino for residents to shelter in place in smoky areas, or evacuate to the shelter at Quinlan Center.
- 3:00pm – the City Manager issues a request for CARES and CERT to activate Saturday morning.
- 4:00pm – An AlertSCC message is sent to all CARES members:
  - i. CARES is activated Saturday morning under “CUP-18-35T”
  - ii. Available responders are to report to the EOC Saturday morning at 8:00am for a briefing and assignments



# Saturday 06:00

## Southwest winds will pick up and cause the fire to jump Rt 35



Cupertino ARES/RACES



3 May 2018

Wildland Fire Communications Drill Prep

# Timeline

## Wildland Fire Scenario

---

### Saturday

- 0730 Start check-ins at EOC
- 0800 Safety Briefing, make Field Assignments
  1. City Ember Watch
  2. Smoke Look-out and Cross-band Control Ops
  3. Checkpoint assignment co-located with CAL FIRE
  4. County Fire Shadow
  5. Sheriff Command Post, Shadow
  6. Quinlan Center Shelter
  7. CAL FIRE Northern Staging as Cupertino Agency Rep Shadow
  8. Comm 469
  9. Others?
- 0900 All field responders at their posts.
- 1130 Secure field operations, travel back to the EOC for debrief.
- 1200 Hold the debrief.
- 1300 End of the exercise.





# Simulating the event

## Wildland Fire Scenario

1. All field responders will receive a scenario sheet for your specific assignment.
2. It will include the current conditions, what you see, what you hear, and when it occurs.
3. At the assigned time, read that item, and take the necessary action.

The following is provided as general information for your consideration during this drill.

Location	Monta Vista Ark, Stevens Creek Blvd and South Foothill Blvd
General Situation	<ul style="list-style-type: none"><li>• Power has been out throughout the city since the 7.5 earthquake at 6:00am. No estimate as to when the power will be restored.</li><li>• The wired and cell phone network is overloaded – no dial tone the last time you checked.</li><li>• You filled a water bottle when you left your house and observed that the water pressure was low.</li><li>• KCBS is on the air, one of the few stations still broadcasting. They report that there was heavy damage from Napa to Carmel. No word of a Tsunami – that is on everyone's mind... but it is still early☺.</li></ul>
Weather:	Weather is current conditions at the time of the drill.

The following are the things you observe on your arrival at your assignment. These are things you see and interactions that you have with the people around you.

INSTRUCTIONS: Write the time you arrived in the blanks below, and pass the message at the appropriate time.

Local Situation on your arrival... this is what you observe.	<ul style="list-style-type: none"><li>• As you arrive at the Ark, it is still being set up. There are only a handful of CERT members covering all positions; 2 more walk in right after you. Not all ICS positions have been staffed, and some ICS members are covering multiple positions.</li><li>• As you arrived, you feel a good-sized aftershock -- you think this was about 4.5.</li><li>• Getting to the Ark was not difficult. Even though the traffic lights were out, there wasn't much traffic on the roads, only the constant wail of sirens.</li><li>• Fire Units Engine 7 and Battalion 7 are not there. The station is locked.</li><li>• <b>YOUR TACTICAL CALL IS MONTA VISTA ARK.</b></li></ul>
_____ + 5 minutes	<ul style="list-style-type: none"><li>• You see several PG&amp;E trucks heading West on Stevens Creek in the direction of what looks like smoke rising up from what you think is the PG&amp;E Substation. CREATE a brief informational message and send to the EOC.</li></ul>



# Final thoughts – standard procedures

## Wildland Fire Scenario

---

### Net control procedures

1. Resource Net
2. Message Net

### Message handling

1. Third Party Traffic
2. Information / Observations / Reports
3. Administrative Traffic



# Final thoughts – what to bring

## Wildland Fire Scenario

---

### Field Assignments

1. GoKit, Radio, Batteries
2. Compass (iPhone compass is ok)
3. Binoculars
4. ICS 214 – Unit log
5. ICS 309 – Comm Log
6. ICS 213 – Message Forms
7. Sun tan lotion
8. Water, snacks
9. Others?



# Thank you

*Any Questions?*

---

