

# Cupertino ARES/RACES Year-End Review

December 5, 2019  
Jim Oberhofer KN6PE



# Topics for tonight

---

The top 8 changes/updates for CARES and Citizens Corps operations...

8. PSPS: Our New Normal
7. City ARK changes
6. Packet Operations Update
5. Field Comm Ops Update
4. Mike-Mike Reporting
3. Comm 469 Updates
2. Type IV Credentialing
1. Enhanced ARK Communications





# #8

## *PSPS: OUR NEW NORMAL*



Cupertino ARES/RACES



## #8 PSPS: Our New Normal

---

- Wildland fires have become common in Northern CA over the last several years.
- Years of drought have contributed to huge areas of forest land being littered with dying or dead trees.
- Weather patterns are changing and show larger seasonal swings than those to which we have been accustomed.
- The area within PG&E's service area considered by CA to be at high risk of wildfire has grown from 15% in 2012 to more than 50% today.



# Its all about the winds, ...

## #8 PSPS: Our New Normal

---

- PSPS Triggers: NWS Red flag Warning, sustained winds, low humidity, dry fuel condition, on-the-ground observations.
- The top four wind gusts by County recorded for the Oct. 9 PSPS were:
  - 77 mph: Top wind gust, Sonoma County, 10-Oct 4:05 a.m.
  - 75 mph: Top wind gust, Contra Costa County, 10-Oct 3:20 a.m.
  - 61 mph: Top wind gust, Tehama County, 10-Oct 6:27 a.m.
  - 61 mph: Top wind gust, Tulare County, 9-Oct 3:10 p.m.

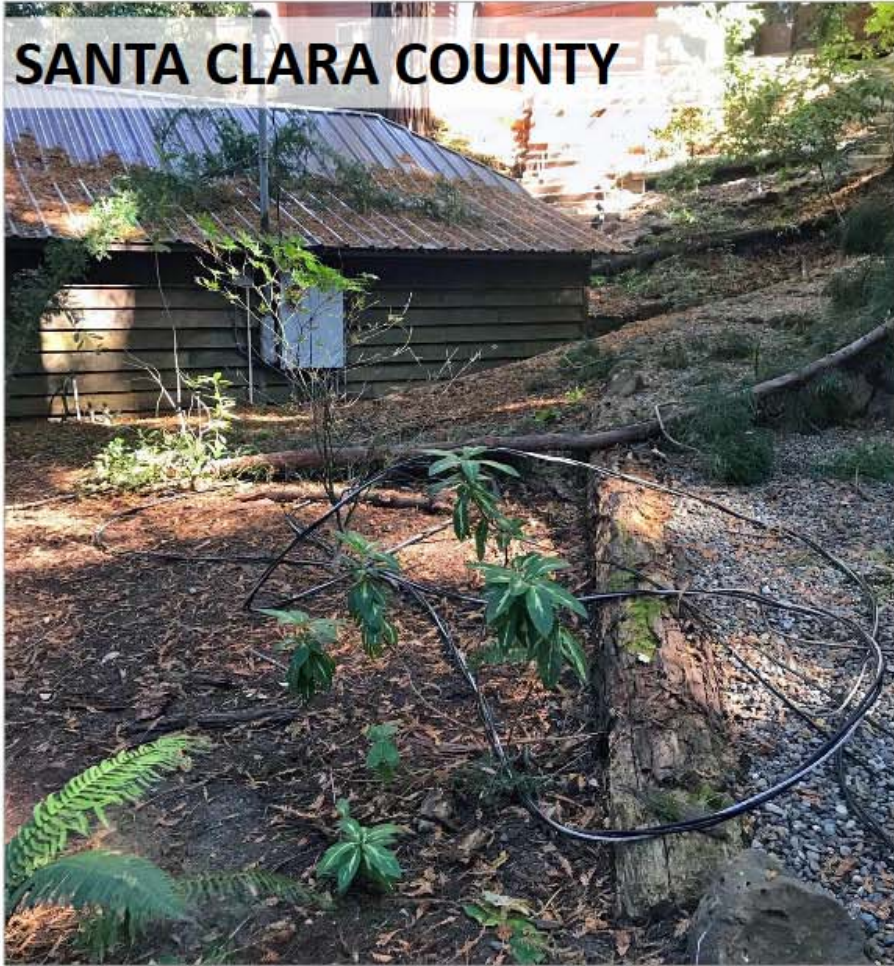
Ref: <https://www.pgecurrents.com/2019/11/15/damage-and-hazards-found-after-safety-shutoff-show-potential-wildfires-were-averted/>



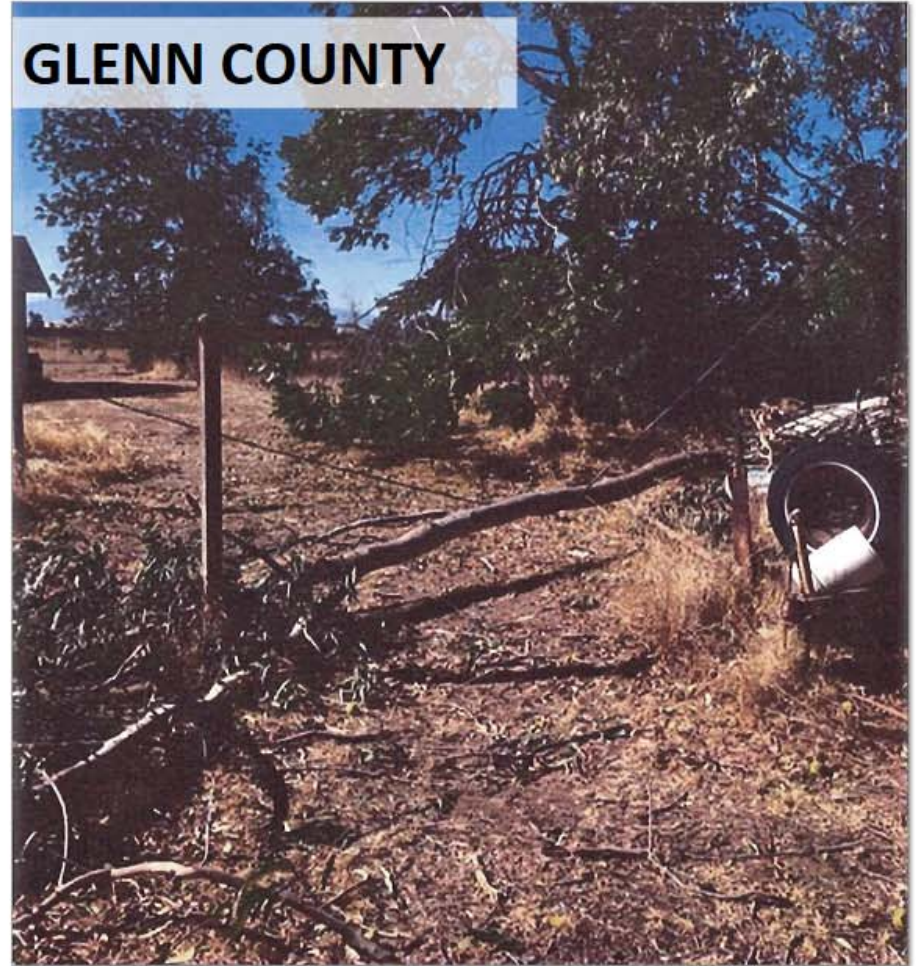
OCTOBER 9 PSPS EVENT

# DAMAGE/HAZARD INCIDENTS

**SANTA CLARA COUNTY**



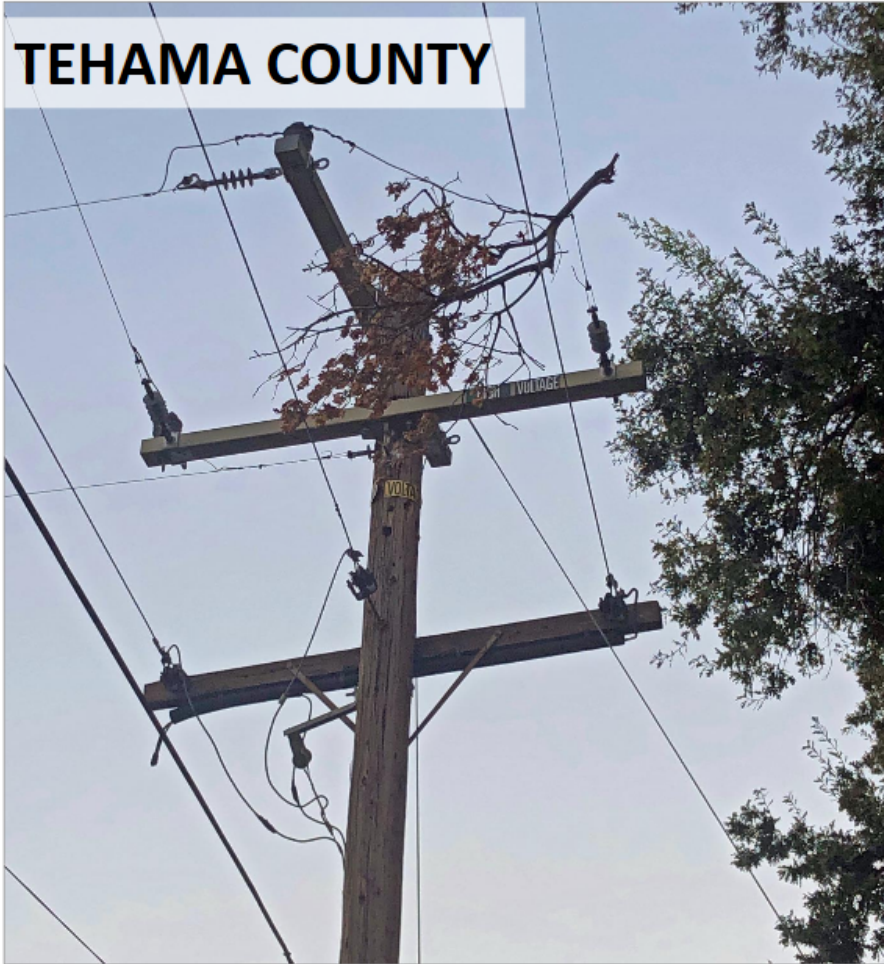
**GLENN COUNTY**



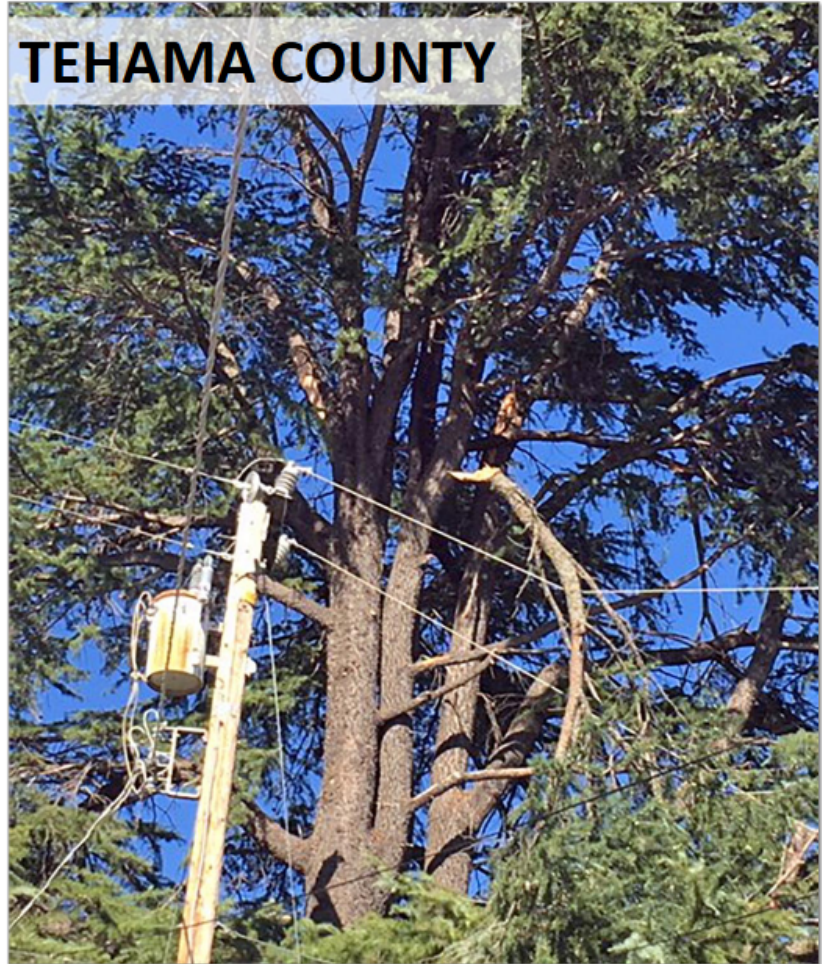
OCTOBER 9 PSPS EVENT

# DAMAGE/HAZARD INCIDENTS

TEHAMA COUNTY



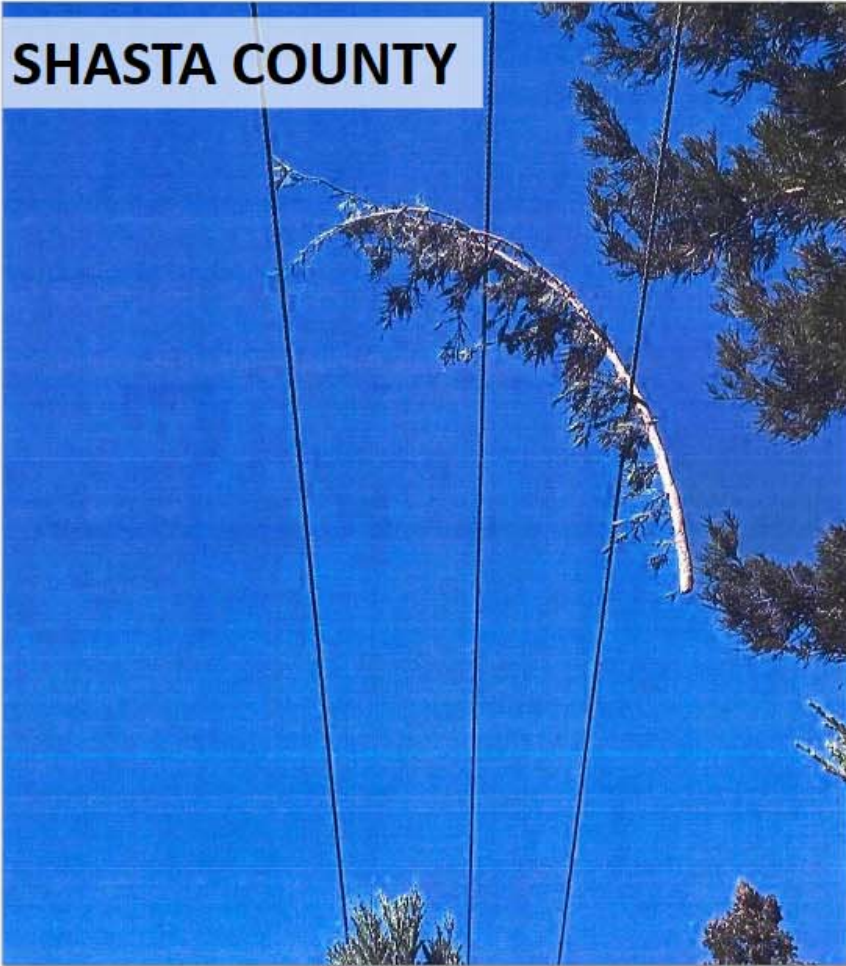
TEHAMA COUNTY



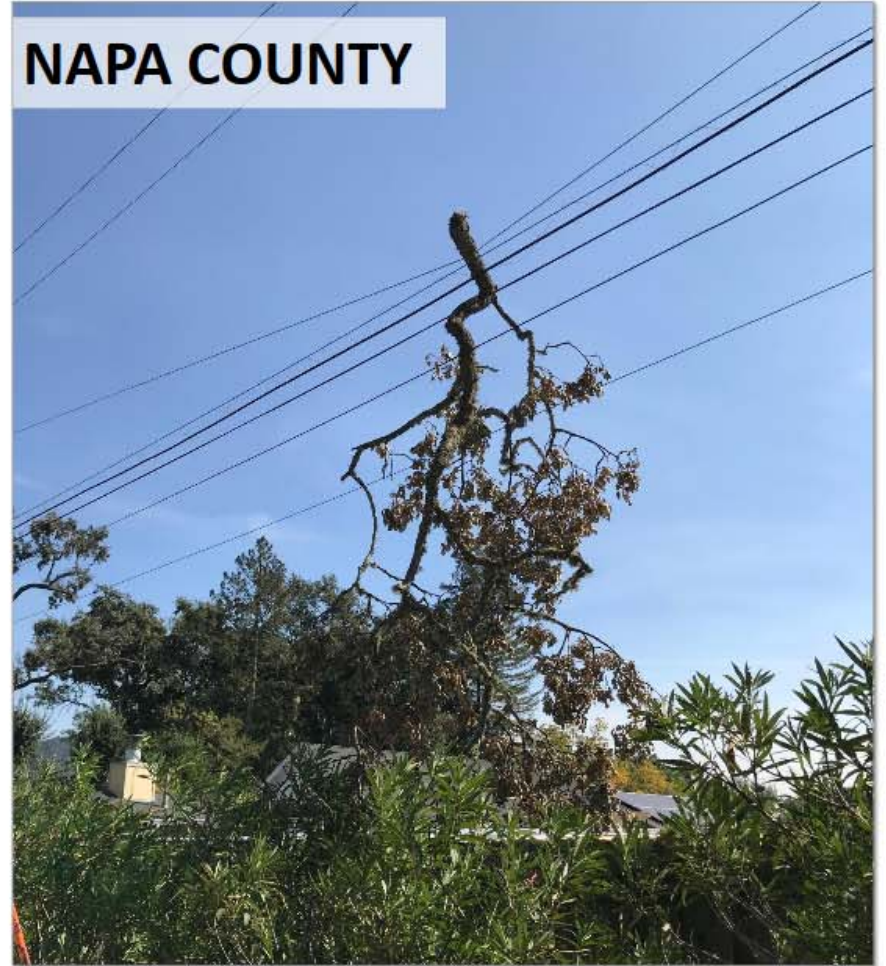
OCTOBER 9 PSPS EVENT

# DAMAGE/HAZARD INCIDENTS

SHASTA COUNTY



NAPA COUNTY

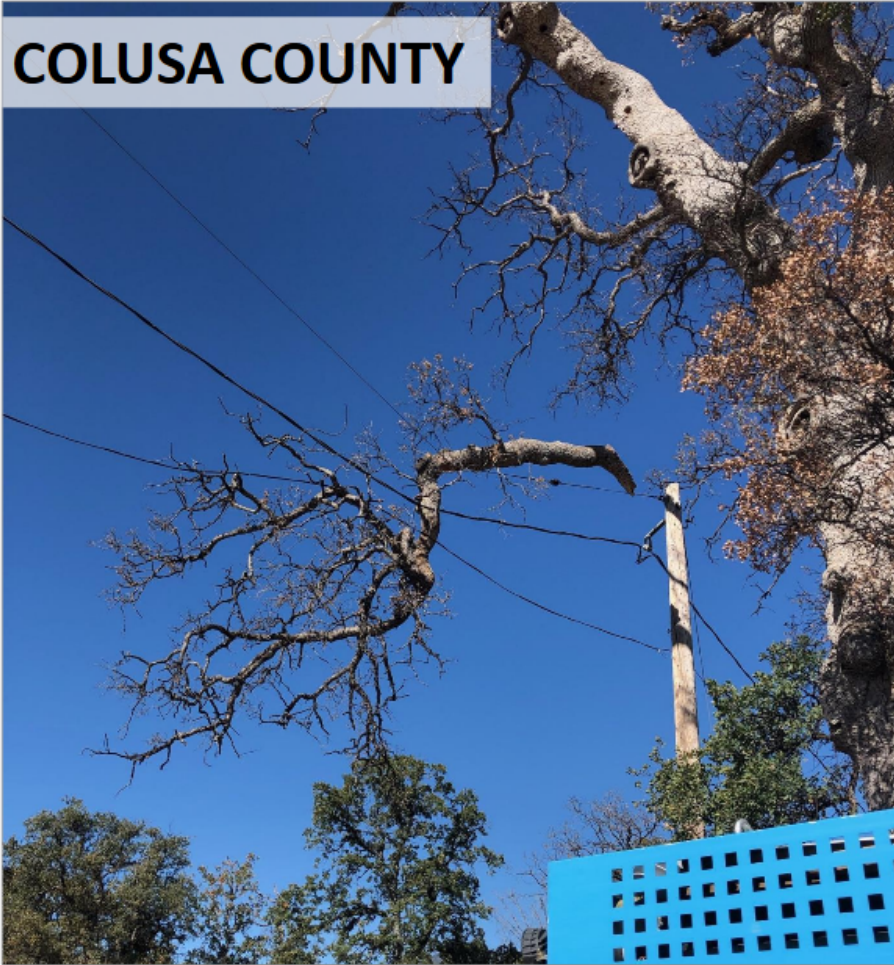




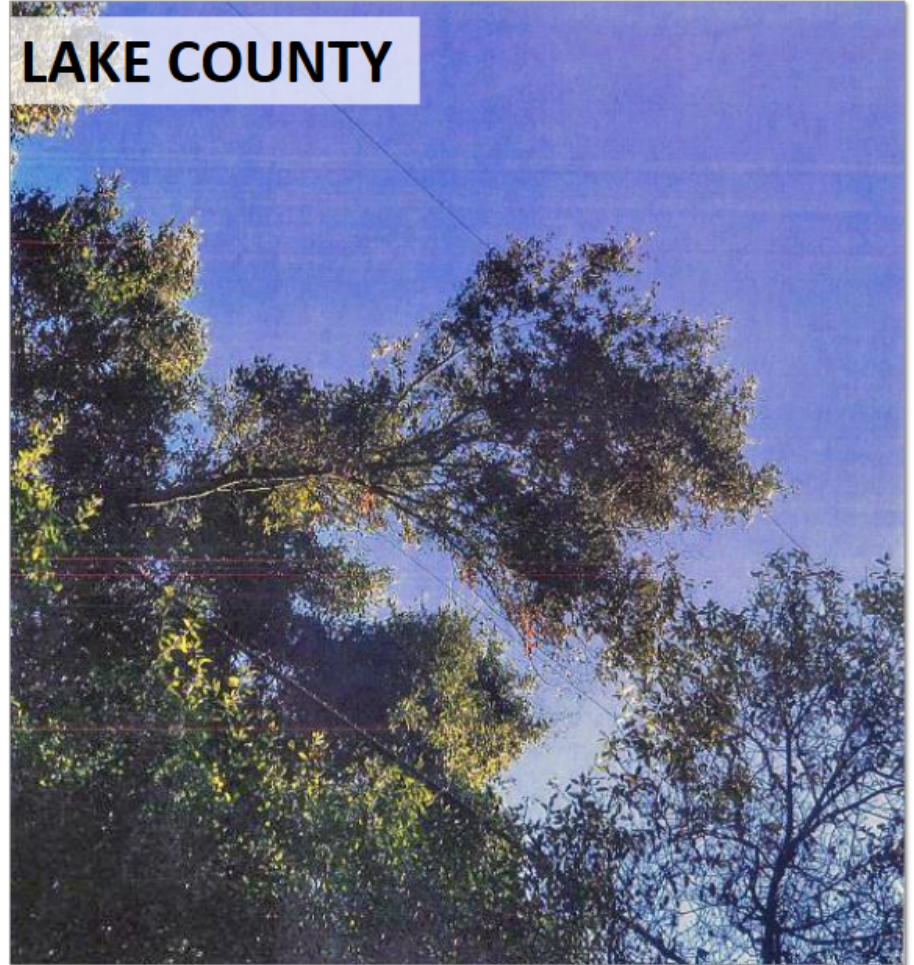
OCTOBER 9 PSPS EVENT

# DAMAGE/HAZARD INCIDENTS

COLUSA COUNTY

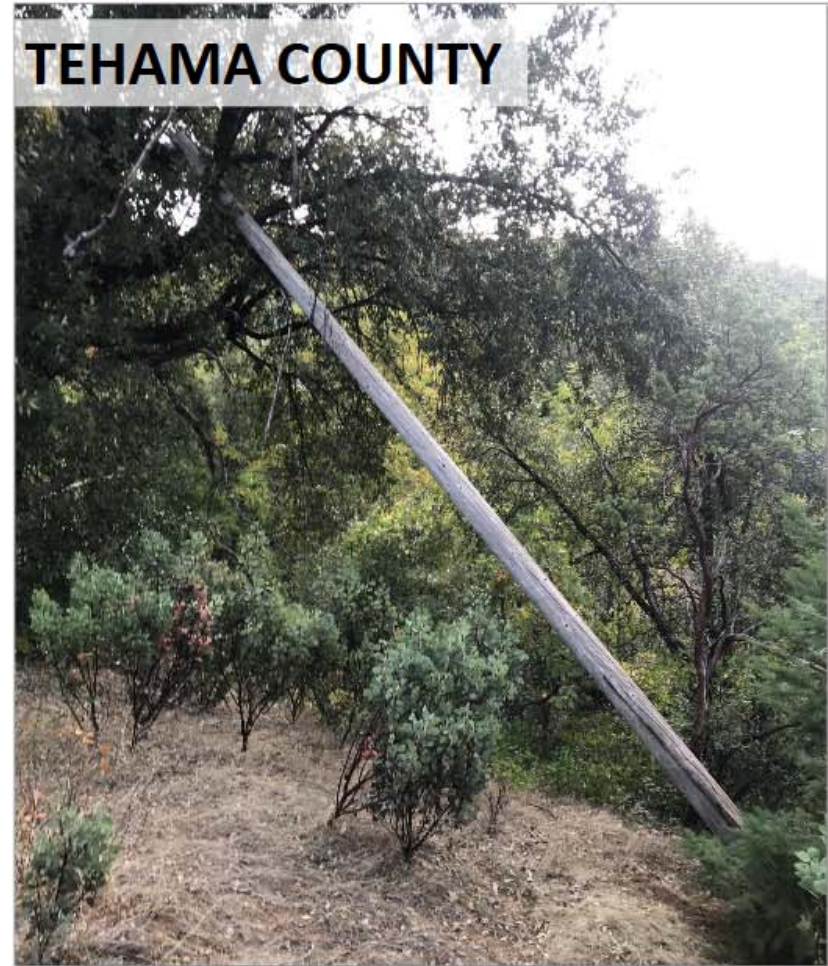
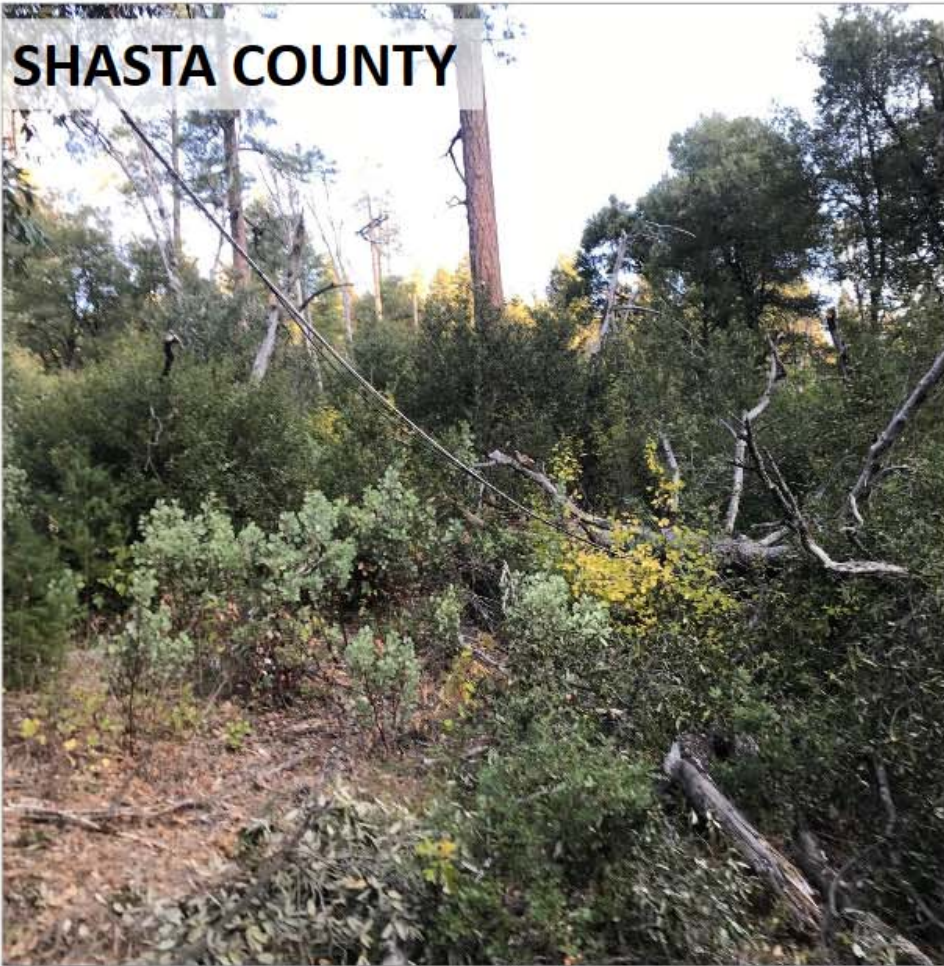


LAKE COUNTY



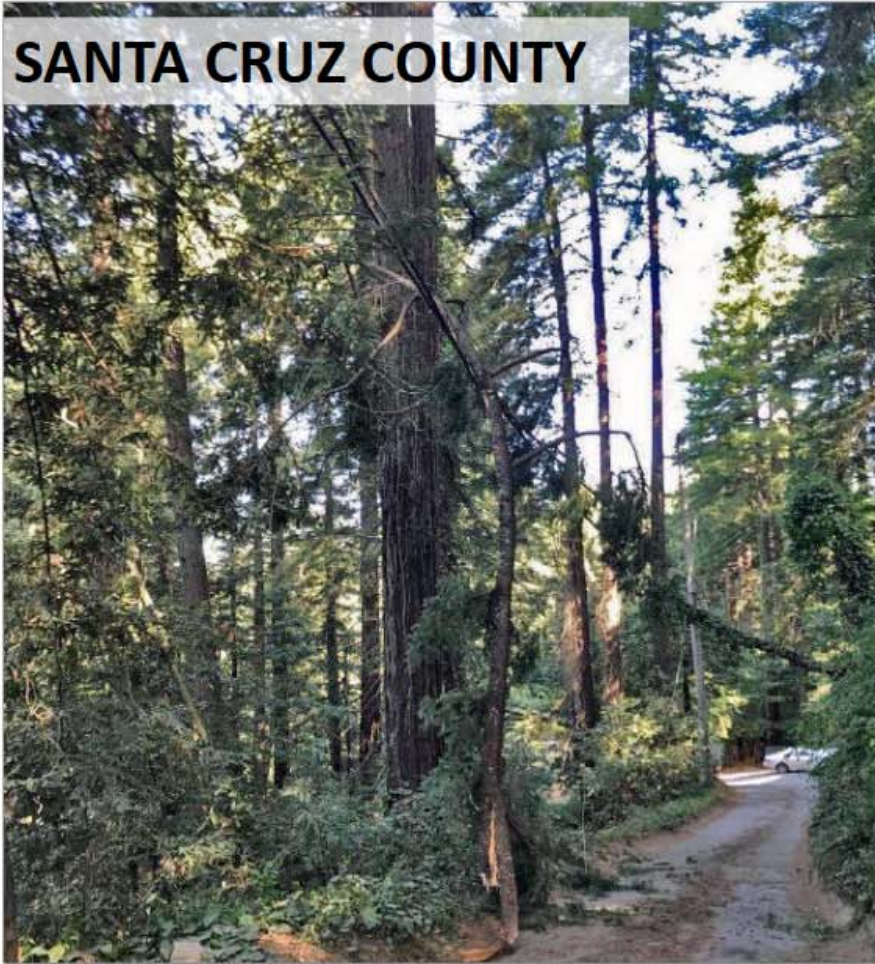
OCTOBER 9 PSPS EVENT

# DAMAGE/HAZARD INCIDENTS



# DAMAGE/HAZARD INCIDENTS

SANTA CRUZ COUNTY



SANTA CRUZ COUNTY



# Only the first of many

## #8. PSPS: Our New Normal

---

1. The October 8<sup>th</sup> & 26<sup>th</sup> 2019 PSPS events are likely to be the first of many to affect Northern California over the next 10 years, Cupertino included.
2. We will have other PSPS events, just as sure as there will be an earthquake in our future.

Check out the 2 After Action Reports...

[www.cupertinoares.org](http://www.cupertinoares.org) > Exercises & Events > Activations





**#7**

***CITY ARKS***

# What's new

## #7 City ARKs

---

1. Updated *ARK Activation Handbook*
2. Re-aligned ARK activation levels with the City and County standard
3. Medical Center ARK (Bubb Road) is decommissioned...  
and gone
4. Hyde ARK moved to Creekside Park
5. Seven Springs ARK moved to Regnart School



# Updated Handbook

## #7 City ARKs

### Updated content

1	INTRODUCTION .....	2
2	LEVEL 3 ACTIVATION – ZONE REPORTING .....	4
3	LEVEL 2 ACTIVATION – ZONE REPORTING WITH COMMUNICATIONS .....	6
4	LEVEL 1 ACTIVATION – INCIDENT COMMAND POST .....	8
5	ARK LOCATIONS.....	10
6	MODIFIED MERCALLI INTENSITY SCALE (MMI).....	14
7	INFORMATION SOURCES .....	15

# Cupertino ARK Activation Handbook

Cupertino Citizen Corps

December 2019



# Activation Levels – Old

## #7 City ARKs

---

	Old Levels
<b>Zone Reporting</b> - Responders start zone report collection; attempt to contact the DOC to pass local status and for instructions to proceed with Level 2 or an ICP, or shut down.	1
<b>Zone Reporting with Communications</b> - Responders have established communications with the DOC, continue to collect incident reports, and provide summary reports to the City.	2
<b>ICP Activation with DOC approval.</b> Responders sign in volunteers, continue collecting incident reports, develop an action plan, and organize teams for the local zone response.	3



# Activation Levels – New

## #7 City ARKs

---

	New Levels
<b>Zone Reporting</b> - Responders start zone report collection; attempt to contact the DOC to pass local status and for instructions to proceed with Level 2 or an ICP, or shut down.	3
<b>Zone Reporting with Communications</b> - Responders have established communications with the DOC, continue to collect incident reports, and provide summary reports to the City.	2
<b>ICP Activation with DOC approval.</b> Responders sign in volunteers, continue collecting incident reports, develop an action plan, and organize teams for the local zone response.	1

# Creekside Park ARK (CUPCSA)

## #7 City ARKs



# Regnart School ARK (CUPRSA)

## #7 City ARKs





#6

*PACKET OPERATIONS*

# What's new

## #6 Packet Operations

---

1. New SCCo RACES Installer v145C released
2. PackItForms replaces PacFORMS
3. Updated *Amateur Packet Radio Field Reference*
4. Updated Cupertino tactical calls
5. Added Alt911 setup, operations information



# PackItForms replaces PacFORMS

## #6 Packet Operations

The image displays several overlapping web forms from the PackItForms system. Each form includes a header with navigation buttons: 'Submit to Outpost', 'Submit via Email', 'Show Data Message', 'Reset Form', and 'Show PDF'. A red box highlights a required field indicator (a small square) next to the 'Show PDF' button.

- MESSAGE FORM:** SCCo ICS Form 213 (05/29/2019) PIF: 2.1. Fields include 'Date: 07/28/2019', 'Situation Severity', 'Message Handling Order', 'My Msg # 6PE-727P', and 'Receiver's Msg #'. A red box highlights the 'Date' field.
- Santa Clara OA Jurisdiction Status:** WebEOC: 20190327 PIF: 2.1. Fields include 'Message Numbers', 'Origin: 6PE-728P', 'Destination', 'Date: 07/28/2019', 'Time', 'ICS Position', 'Location', and 'Name'. A red box highlights the 'Time' field.
- Santa Clara County EOC Resource Request Form 213RR:** Version: 8/17 PIF: 2.1. Fields include 'Message Numbers', 'Origin: 6PE-728P', 'Destination', 'Date: 07/28/2019', 'Time', 'ICS Position', 'Location', and 'Name'. A red box highlights the 'Time' field.
- Santa Clara OA Shelter Status:** WebEOC: 20130814 PIF: 2.1. Fields include 'Message Numbers', 'Origin: 6PE-730P', 'Destination', 'Date: 07/28/2019', 'Time', and 'Handling' (radio buttons for Immediate (ASAP), Priority (<1 hr), Routine (<2 hrs)). A red box highlights the 'Time' field.
- Allied Health Status Report Short Form (DEOC-9):** Version: February 2018 PIF: 2.1. Fields include 'Message Numbers', 'Origin: 6PE-731P', 'Destination', 'Date: 07/28/2019', 'Time', and 'Handling' (radio buttons for Immediate (ASAP), Priority (<1 hr), Routine (<2 hrs)). A red box highlights the 'Time' field.

Other forms visible include 'Santa Clara OA Shelter Status' with fields for 'Shelter Type', 'Status', 'Name', 'Address', 'City', 'State', 'Zip', 'Latitude', and 'Longitude'. The 'Allied Health Status Report Short Form (DEOC-9)' includes sections for 'Facility Information', 'Facility Status', 'Facility Contact Information', and 'Additional Attachments Provided'.

# County Use of PackItForms

## #6 Packet Operations

---

- Santa Clara County PackItForms contains these public forms
  1. *XSC ICS-213 Message* Form adapted for Santa Clara County to transmit msgs.
  2. *XSC EOC-213RR Resource Request* Form – Requests specific resources needed to support an emergency.
  3. *XSC Op Area Municipal Status* Form – Reports city emergency situation status to county OES.
  4. *XSC Op Area Shelter Status* Form – Reports information and status on shelters opened in the cities to county OES.
  5. *XSC Allied Health Facility Status* – Reports information and status of private Skilled Nursing facilities to SCC Public Health Department.
- The SCC Installer program automatically installs these packet forms with Outpost.



### NOTE!!!

**These forms are ONLY for use between the City and the County,  
not within Cupertino!!!**



# Updated Handbook

## #6 Packet Operations

1	QUICK REFERENCE.....	2
2	PACKET STARTUP PROCEDURE.....	4
3	CLIENT SOFTWARE.....	6
4	ALT911 PACKET MESSAGE HANDLING.....	12
4.1	INTRODUCTION.....	12
4.2	ASK THE RIGHT QUESTIONS.....	13
4.3	PACKET SETTINGS FOR ALT911 DEPLOYMENTS.....	14
5	CREATING PACKET MESSAGES.....	16
5.1	PACKET MESSAGE ADDRESSING BASICS.....	16
5.2	SENDING A PACKETFORM MESSAGE.....	17
5.3	FREE FORM MESSAGE.....	20
5.4	SENDING A TEXT FILE.....	21
5.5	SENDING A SPREADSHEET .CSV FILE.....	21
5.6	RECEIVING A SPREADSHEET .CSV FILE.....	22
6	AMATEUR RADIO PACKET OVERVIEW.....	23

## Amateur Packet Radio Field Reference

Cupertino ARES/RACES

December 2019





# Updated Cupertino tactical calls

## #6 Packet Operations

### Updates to...

- City facilities
- ARKs
- Parks
- Public Safety
- Shelters

#### Cupertino OES

CUPCCC	Citizen Corps
CUPDOC	Citizens Corps DOC
CUPDPW	DPW/Service Center
CUPEOC	EOC
CUPMRC	Med Reserve Corps
CUPOPS	Field Ops

#### ARKs

CUPMVA	Monta Vista ARK (Z1)
CUPRSA	Regnart Sch ARK (Z2)
CUPGGA	Garden Gate ARK (Z3)
CUPLSA	Lawson Sch ARK (Z4)

CUPDZA	DeAnza ARK (Z5)
CUPCSA	Creekside ARK (Z6)
CUPMRA	Montebello Ridge ARK
CUPSCA	Stevens Canyon ARK

#### City Parks & Rec

CUPBBF	Blackberry Farm
CUPCSP	Creekside Park
CUPJOL	Jollyman Park
CUPMEM	Memorial Park
CUPPOR	Portal Park
CUPWIL	Wilson Park
CUPLVP	Linda Vista Park

CUPQLN	Quinlan Center
CUPSEN	Senior Center

#### Public Safety

XSCSWS	County Sheriff's Station, West Side
XSCF71	Cupertino Fire
XSCF72	Seven Springs Fire
XSCF77	Monta Vista Fire

#### Local Services

CUPSAN	Cup Sanitary District
CUPWVS	West Valley Community Services
SJWEOC	San Jose Water

#### Shelters

CUPSH1	Shelter 1
CUPSH2	Shelter 2
CUPSH3	Shelter 3
CUPSH4	Shelter 4

#### Ad-hoc Addresses

CUP001 through CUP009
--------------------------



# Alt911

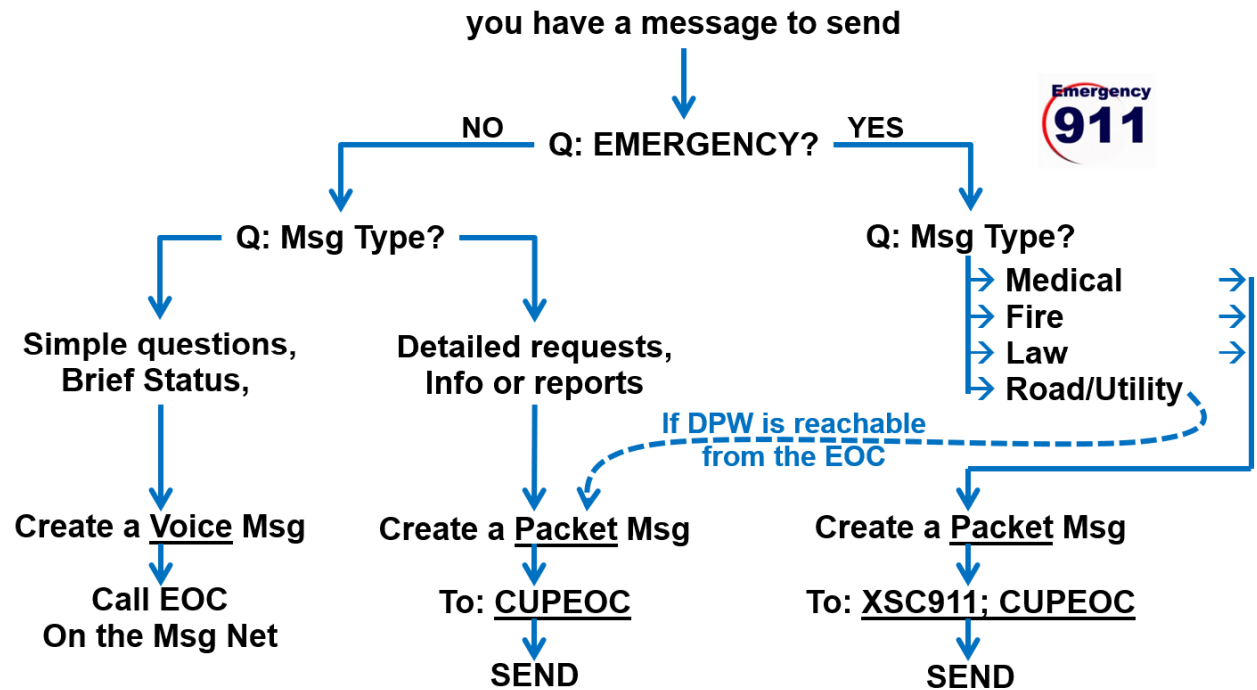
## #6 Packet Operations

### *Adds the following to the Packet Handbook:*

- Process
- Addressing
- Asking the right questions
- Packet Settings

### *Our next steps:*

1. Complete the Alt911 deployment to County Comm
2. Test Alt911 revisions as part of a 2020 exercise
3. Have in place by August 2020 to accommodate the next PSPS event



# #5

## *FIELD COMMUNICATIONS OPERATIONS*

# What's new

## #5 Field Comm Ops

---

1. Updated *Field Communications Operations Handbook*
2. More on-air exchange examples
3. More forms and details
4. Updated Modified Mercalli Intensity (MMI) Scale; aligns with USGS



# Updated Handbook

## #5 Field Comm Ops

1	PHONE NUMBERS .....	3
2	OPERATING FREQUENCIES .....	3
3	SAFETY BRIEFING .....	4
4	PROCEDURES .....	6
4.1	PRELIMINARY SAFETY ASSESSMENT .....	6
4.2	FIELD RESPONDER .....	8
4.3	MESSAGE HANDLING .....	10
4.4	PASSING WRITTEN MESSAGES .....	11
4.5	PASSING UNWRITTEN MESSAGES .....	11
5	ON-AIR EXCHANGES .....	12
5.1	CHECKING IN TO THE EMERGENCY NET – EARTHQUAKES .....	12
5.2	CHECKING IN TO THE EMERGENCY NET – ALL OTHERS.....	12
5.3	OPERATING ON THE RESOURCE NET .....	13
5.4	OPERATING ON THE MESSAGE NET .....	13
5.5	MESSAGE PASSING – THIRD PARTY MESSAGE EXAMPLE.....	14
5.6	MESSAGE PASSING – INFORMATIONAL MESSAGE EXAMPLE .....	15
5.7	MESSAGE PASSING – PSA MESSAGE EXAMPLE .....	16
6	FORMS.....	18
6.1	ICS 214 UNIT LOG .....	18
6.2	ICS 213SF MESSAGE, SHORT FORM.....	20
6.3	ICS-213SR SMOKE REPORT.....	22
6.4	ICS-213-911 ALTERNATE 9-1-1 REPORT.....	24
6.5	ICS 309 COMMUNICATIONS LOG .....	26
6.6	COES 105 PRELIMINARY SAFETY ASSESSMENT, FIELD .....	28
7	PHONETIC ALPHABET & NUMBERS.....	30
8	MODIFIED MERCALLI INTENSITY SCALE (MMI).....	31
9	MINIMUM FIELD DEPLOYMENT EQUIPMENT (GO-KIT) .....	32
10	ABOUT CARES .....	35

# Field Communications Operations Handbook

Cupertino ARES/RACES

December 2019





**#4**

***MIKE-MIKE REPORTING***

# Mike-Mike Reporting

## #4 Mike-Mike Reporting

---

### Situation

1. CARES needs to better determine the extent of an earthquake right up front.
2. County RACES has been using the Modified Mercalli Intensity (MMI) scale to pass **Mike-Mike** Reports.
3. While subjective and dependent on your location, the number of reports will provide a more averaged view of the impact.
4. We will then use this to trigger the appropriate response.



# MM triggers

## #4 Mike-Mike Reporting

When do I get on the net?

**IV...** Your call

**V...** Yes; may trigger a PSA

**VI...** Yes; will trigger a PSA; may trigger a field assignment

**VII...** Yes; will trigger a PSA and field assignments

<b>I</b>	Not felt	Not felt except by a very few under especially favorable conditions.
<b>II</b>	Weak	Felt only by a few persons at rest, especially on upper floors of buildings.
<b>III</b>	Weak	Felt quite noticeably by persons indoors, especially on upper floors of buildings. Many people do not recognize it as an earthquake. Standing motor cars may rock slightly. Vibrations similar to the passing of a truck. Duration estimated.
<b>IV</b>	Light	Felt indoors by many, outdoors by few during the day. At night, some awakened. Dishes, windows, doors disturbed; walls make cracking sound. Sensation like heavy truck striking building. Standing motor cars rocked noticeably.
<b>V</b>	Moderate	Felt by nearly everyone; many awakened. Some dishes, windows broken. Unstable objects overturned. Pendulum clocks may stop.
<b>VI</b>	Strong	Felt by all, many frightened. Some heavy furniture moved or overturned. Dishes, glassware, knickknacks, and books fall off shelves. Weak plaster, adobe buildings, and some poorly built masonry buildings cracked. Damage slight. Trees and bushes shake visibly.
<b>VII</b>	Very Strong	Negligible damage in buildings of good design and construction. Slight to moderate in well-built ordinary structures. Considerable damage in poorly built or badly designed structures. Weak chimneys broken at roof line. Fall of plaster, loose bricks, stones, tiles, cornices, unbraced parapets and porches. Some cracks in better masonry buildings. Waves on ponds.
<b>VIII</b>	Severe	Steering of cars affected. Extensive damage to unreinforced masonry buildings, including partial collapse. Fall of some masonry walls. Twisting, falling of chimneys and monuments. Wood-frame houses moved on foundations if not bolted; loose partition walls thrown out. Tree branches broken.
<b>IX</b>	Violent	General panic. Damage to masonry buildings ranges from collapse to





# MM Reporting: what it sounds like

## #4 Mike-Mike Reporting

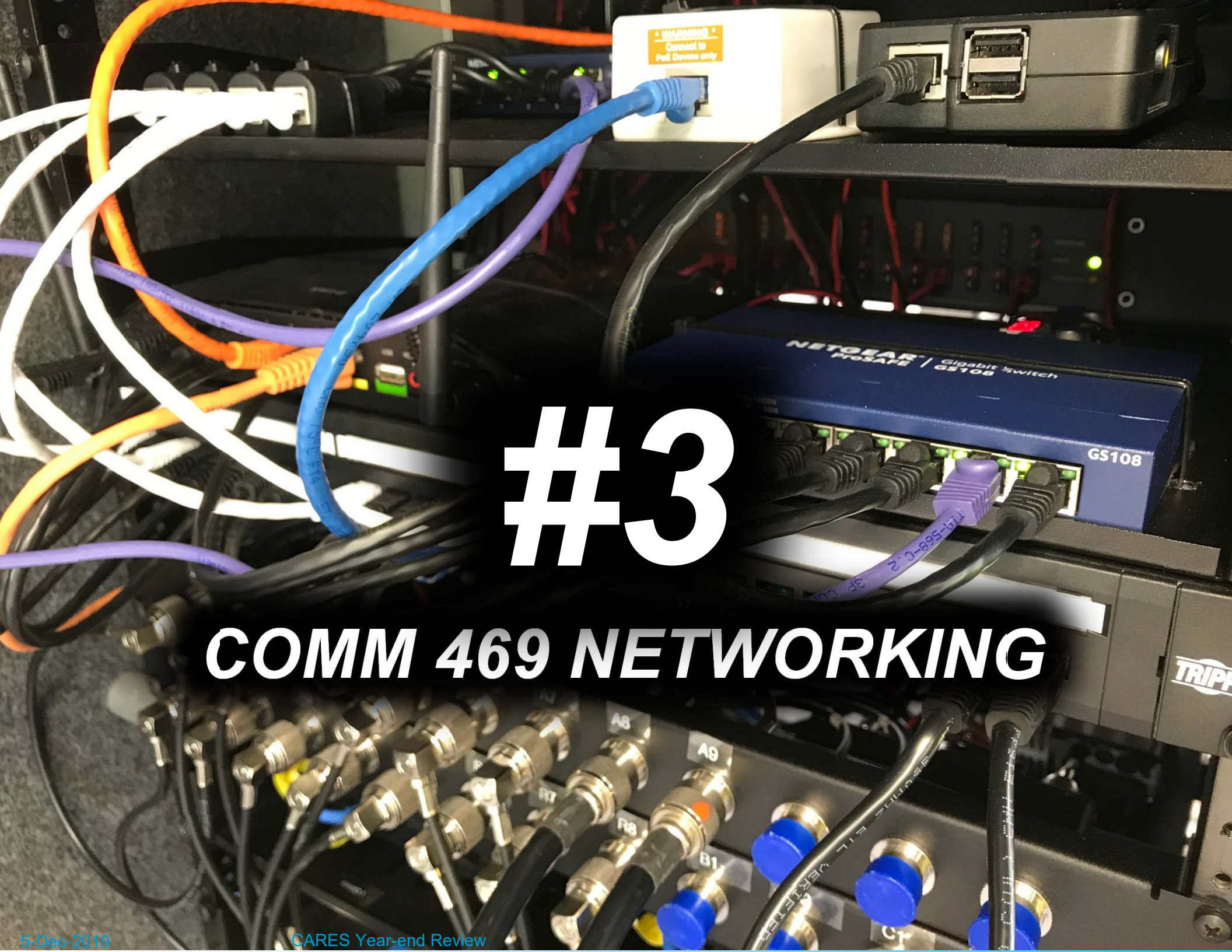
---

Incorporate into the emergency net check-ins; would sound like this:

**NCS:** ... *all stations, Check in with your Grid location, Mike-Mike Report and availability for a field assignment. Stations with suffix Alpha through Juliet, go now.*

**KV6BC:** *KV6BC, Oscar 19, Mike-Mike 6, available. KV6BC.*





**#3**

**COMM 469 NETWORKING**

# What's New

## #3 Comm 469 Networking

---

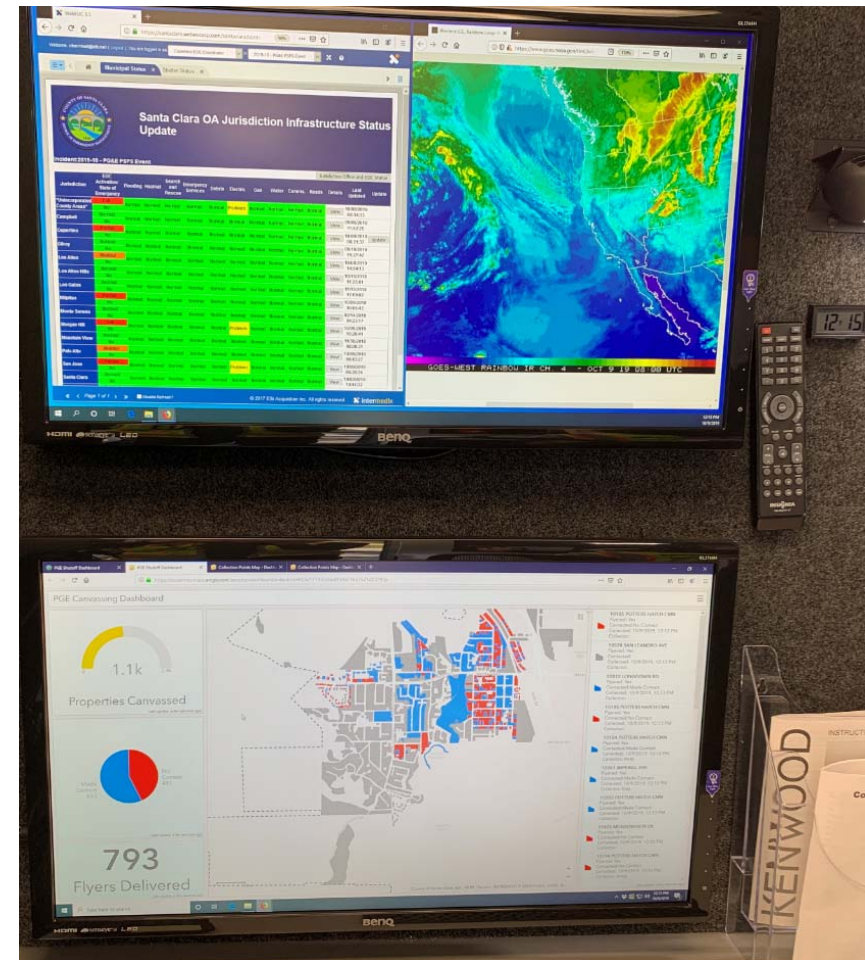
1. Build-out of computer workstations
2. Internet connectivity
3. Walk-up printing



# Computer Workstations

## #3 Comm 469 Networking

1. Three of the four operating positions now have computer workstations in place, for use as:
  - Situation Status
  - WebEOC support
  - Packet Radio
  - Internet lookup, mapping
  - On-line forms, documentation access
  - Future application expansion

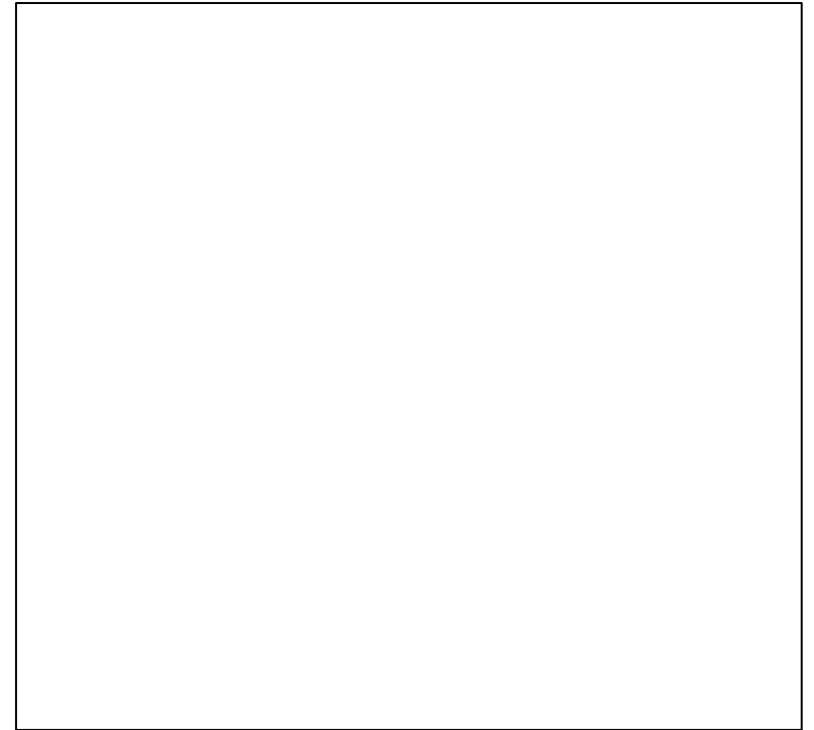


# Internet connectivity

## #3 Comm 469 Networking

---

1. Added a 4G LTE Wireless Modem
2. Provides internet access through the wireless cell network
3. Puts the Comm 469 computers and other network users on the internet



# Walk-up printing

## #3 Comm 469 Networking

1. The *VanNet* printer is accessible by any network connected device (computers, tablets, and smartphones) that can connect to the network.
  - From your device, navigate to your WiFi setup, search for, and select Comm469. When prompted, enter the Passcode... \*\*\*\*\*
  - Verify you are connected to *VanNet*.
  - Print from your PC, iPhone, Android, or tablet
  - Printer: Brother Compact Laser Printer



...or specifics of each of  
...structions are on the next page.

### Credential Requirements

#### Administrative

- Work/live/active in Santa Clara County; respond to primary jurisdiction
- 18 years of age or older
- Valid Technician class or higher Amateur Radio license
- Valid California driver's license or State-issued ID card
- Reliable transportation for assignments
- Has read "SCCo ARES/RACES Credentialing Program Handbook"
- Has read "SCCo ARES/RACES Perf. Stds. & Best Practices"
- Registered with primary jurisdiction as Disaster Service Worker

#### Training

- Santa Clara County ARES/RACES Training
- International Emergency Communications (or equivalent)
- Emergency Management Training
- ICS-100 / IS-100: Intro to ICS
- ICS-200 / IS-200: ICS to NIMS
- ICS-700 / IS-700: Intro to NIMS
- SEMS / IS-600: Intro to SEMS

#### Equipment

- All items in SCCo standard 2-hour Carry Kit
- All items in SCCo standard 12-hour Go Kit

#### Knowledge

- Demonstrate personal radio familiarity per Credentialing

#### Experience (or equivalent, as determined)

- At least eight weekly SPECS or
- At least two quarters

# #2

# TYPE 4 CREDENTIALING

# What's new

## #2 Type IV Credentialing

---

1. County MAC Program changes
2. What is Type IV Operator?
3. Getting to Type IV
4. Type IV and CARES





# What is a Type IV Operator

## #2 Type IV Credentialing

---

- A Type IV credential level indicates basic operating capabilities. It is not role specific.
- The Type IV operator has the basic skills, standard equipment, and a moderate amount of experience, all of which enables him/her to operate safely in an assignment, perhaps with coaching.
- Typical assignments include basic information gathering and status reporting or supporting a more experienced operator.



# Comparison of Capabilities

## #2 Type IV Credentialing

	Type V	Type IV	Type III	Type II
Equipped for up to 12 Hr shift	Unknown	Yes	Eval	Eval
Respond anywhere in jurisdiction	Unknown	Yes	Eval	Eval
Basic Net Usage Procedures	Unknown	Yes	Eval	Eval
Simple Damage/status reports	Unknown	Yes	Eval	Eval
Handle low traffic levels	Unknown	Yes	Eval	Eval
3 <sup>rd</sup> Party Traffic	Unknown	Unknown	Eval	Eval
Low-to-medium traffic levels	Unknown	Unknown	Eval	Eval
Manage problems	Unknown	Unknown	Eval	Eval
Equipped w/ mobile radio, ant	Unknown	Unknown	Unknown	Eval
Two Nets, Cross band	Unknown	Unknown	Unknown	Eval
Medium-to-high traffic levels	Unknown	Unknown	Unknown	Eval



# Getting to Type IV

## #2 Type IV Credentialing

Name: \_\_\_\_\_ Call Sign: \_\_\_\_\_ Jurisdiction: \_\_\_\_\_

All activities must be performed according to the Performance Standards. For specifics of each of these requirements, consult the Credentialing Program Handbook. Instructions are on the next page.

Radio Officer			Credential Requirements (completed within the last two years)
Date	Call Sign	Initials	
			<b>Administrative</b>
			Work/live/active in Santa Clara County; respond to primary jurisdiction
			18 years of age or older
			Valid Technician class or higher Amateur Radio license
			Valid California driver's license or State-issued ID card
			Reliable transportation for assignments
			Has read "SCCo ARES/RACES Credentialing Program Handbook"
			Has read "SCCo ARES/RACES Perf. Stds. & Best Practices"
			Registered with primary jurisdiction as Disaster Service Worker
			<b>Training</b>
			<b>Santa Clara County ARES/RACES Training</b>
			Intro to Emergency Communications (or equivalent)
			Fundamentals of Emergency Communications*
			<b>Emergency Management Training*</b>
			ICS-100 / IS-100: Intro to ICS
			ICS-200 / IS-200: ICS for Single Resources
			ICS-700 / IS-700: Intro to NIMS
			SEMS G606: Intro to SEMS
			<b>Equipment</b>
			All items in SCCo standard 2-hour Carry Kit
			All items in SCCo standard 12-hour Go Kit
			<b>Knowledge</b>
			Demonstrate personal radio familiarity per Credential handbook
			<b>Experience (or equivalent, as determined by local jurisdiction RO)</b>
			At least eight weekly SPECS or SVECS and city net check-ins
			At least two quarterly drills
			At least one approved functional or full-scale exercise
			At least one approved public service event or real emergency incident
			<b>Performance</b>
			Functioned effectively & professionally with served agency
			Has maturity and experience to perform according to "SCCo ARES/RACES Performance Standards and Best Practices"
			<b>Ongoing Participation</b>
			Agree to minimum training and participation requirements

Meet a set of well-defined requirements:

1. Administrative
2. Training
3. Equipment
4. Knowledge
5. Experience
6. Performance
7. On-going participation

Local jurisdictions may have additional requirements and make the Type IV Credential a part of their overall requirements.

**Radio Officer:**

I have reviewed the requirements in the Credentialing Program Handbook for each of the above items and have verified that the candidate has fully completed each requirement as described in the handbook.

\_\_\_\_\_  
Print Name of Radio Officer                      Signature of Radio Officer                      Call Sign                      Date

# 1. Administrative

## #2 Type IV Credentialing

---

Radio Officer			Credential Requirements
Date	Call Sign	Initials	
			<b>Administrative</b>
			Work/live in Santa Clara County; respond to primary jurisdiction
			18 years of age or older
			Valid Technician class or higher Amateur Radio license
			Valid California driver's license or State-issued ID card
			Reliable transportation for assignments
			Has read "SCCo ARES/RACES Credentialing Program Handbook"
			Has read "SCCo ARES/RACES Perf. Stds. & Best Practices"
			Registered with primary jurisdiction as Disaster Service Worker



# 2. Training

## #2 Type IV Credentialing

Radio Officer			Credential Requirements
Date	Call Sign	Initials	
			<b>Training</b>
			<b>Santa Clara County ARES/RACES Training</b>
			Intro to Emergency Communications (or equivalent)
			Fundamentals of Emergency Communications
			<b>Emergency Management Training</b>
			ICS-100 / IS-100: Intro to ICS
			ICS-200 / IS-200: ICS for Single Resources
			ICS-700 / IS-700: Intro to NIMS
			SEMS G606: Intro to SEMS



# 3, 4. Equipment, Knowledge

## #2 Type IV Credentialing

Radio Officer			Credential Requirements
Date	Call Sign	Initials	
			<b>Equipment</b>
			2-hour Carry Kit
			12-hour Go Kit
			<b>Knowledge</b>
			Demonstrate personal radio familiarity per Credential handbook

### Personal Radio Familiarity

Configure radio to perform each of the following unaided:

1. Simplex without tone
2. Simplex with tone and tone squelch
3. Repeater with offset and CTCSS tone
4. Save configurations to and recall from memory
5. Lock keypad or mic controls, if so equipped
6. Full/factory reset (clear all settings) [explain only; demonstration not required]



# 5. Experience

## #2 Type IV Credentialing

Radio Officer			Credential Requirements
Date	Call Sign	Initials	
			<b>Experience (or equivalent, as determined by local jurisdiction RO)</b>
			At least eight weekly SPECS or SVECS and city net check-ins
			At least two quarterly drills
			At least one approved functional or full-scale exercise
			At least one approved public service event or real emergency incident

### Experience

We have a lot of leeway here on what drills and exercises will count.



# 6, 7. Performance, Participation

## #2 Type IV Credentialing

---

Radio Officer			Credential Requirements
Date	Call Sign	Initials	
			<b>Performance</b>
			Functioned effectively & professionally with served agency
			Has maturity and experience to perform according to "SCCo ARES/RACES Performance Standards and Best Practices"
			<b>Ongoing Participation</b>
			Agree to minimum training and participation requirements





# Why are we doing this?

## #2 Type IV Credentialing

1. Credentialing is becoming more prevalent in Emergency Management, especially where mutual aid may be used.
2. The State of California has a credentialing program for EOC positions at local, Op Area, and State levels.
3. Jurisdictions and served agencies are increasingly aware of credentialing and are expecting to build credentialed teams.
4. Cupertino OES is no exception.
5. County Fire will be expecting a level of credentialing given us operating in their Fire Stations.

Program Manager			Endorsement Requirements
Date	Call Sign	Initials	
			<b>Credentials</b>
			SCCo RACES Type III Field Operator (F3)
			SCCo RACES Type III Packet Operator (P3)
			<b>Administrative</b>
			LiveScan and background check by SCCo Sheriff (OR SCCo RACES Mutual Aid Communicator endorsement)
			Recommendation from local jurisdiction Radio Officer
			<b>Training</b>
			<b>County Fire Training</b>
			ACES County Fire Station Operations
			<b>Experience</b>
			Min 1: approved drill/exercise, public service or incident



# How do we get there?

## #2 Type IV Credentialing

---

1. If you are a MAC, you are automatically a Type IV and a MAC, and have a year to complete the SEMS G606 class (on-line).
2. New Members: Type IV is an expectation for membership

### ***Here's the Challenge...***

1. Existing Members: It is likely that many CARES members already qualify or are very close. Complete the Type IV requirements within 1 year.





MFG. IN THE U.S.A.  
HARDENED POWER SYSTEMS



FC

CE



WATERPROOF WHEN CLOSED

# #1



## ENHANCED ARK COMMUNICATIONS



1=462.5625	6=462.6675	18=
2=462.5875	7=462.7125	19=
3=462.6125	15=462.5500	
4=462.6375	16=462.5750	
5=462.6625	17=462.6000	

TO BATT.

3 AMP

AUX.

SOLAR  
50 WATT  
MAX

# Why are we looking at GMRS?

## #1 Enhanced ARK Comms

---

### The Situation

- Cupertino ARKs have a need to communicate not only between ARK sites and the EOC, but throughout their respective ARK zone.
- Amateur Radio is the method the City uses for ARK-to-EOC comms.
- FRS (Family Radio Service) radio is the method for intra-ARK communications because of its license-free operation.
- However, it is not effective for wide areas greater than a few city blocks given the suburban environment within a typical zone.
- While Amateur Radio has been used in zone assessment exercises, this is not practical during a real activation due to competing demands for CARES resources.



# Why are we looking at GMRS?

## #1 Enhanced ARK Comms

---

### The Background

The General Mobile Radio Service (GMRS) is an FCC licensed land-mobile FM UHF radio service (462 MHz and 467 MHz) designed for short-distance two-way communication. Key GMRS features are:

1. requires an FCC issued license, no test, 10-year term, \$70.
2. allows for external antennas that increase range.
3. transmit at up to 50 watts on the 16 main channels.
4. supports the use of repeaters.
5. individual license extends to immediate family.
6. can communicate with FRS users on 22 shared frequencies; some power limits apply.



# FRS vs GMRS

## #1 Enhanced ARK Comms

---

### Comparing FRS and GMRS

	FRS	GMRS
FCC Rules	Part 95 Subpart B	Part 95, Subpart E
License	By rule	Issued, 10 year term, \$70, no test
Frequencies	22 FRS channels	30 GMRS channels
Radios	HTs	HTs, Mobiles
Antennas	Fixed antenna	External antennas
Power	Up to 2.0 watts	Up to 50 watts
Repeaters	No	Yes



# Frequencies

## #1 Enh ARK Comms

1. Thinking in terms of frequencies...

Freq (MHz)	FRS CH	FRS PWR	FRS BWTH	GMRS PWR	GMRS BWTH
462.5500	15	2 W	12.5 kHz	50 W	20 kHz
462.5625	1	2 W	12.5 kHz	5 W	20 kHz
462.5750	16	2 W	12.5 kHz	50 W	20 kHz
462.5875	2	2 W	12.5 kHz	5 W	20 kHz
462.6000	17	2 W	12.5 kHz	50 W	20 kHz
462.6125	3	2 W	12.5 kHz	5 W	20 kHz
462.6250	18	2 W	12.5 kHz	50 W	20 kHz
462.6375	4	2 W	12.5 kHz	5 W	20 kHz
462.6500	19	2 W	12.5 kHz	50 W	20 kHz
462.6625	5	2 W	12.5 kHz	5 W	20 kHz
462.6750	20	2 W	12.5 kHz	50 W	20 kHz
462.6875	6	2 W	12.5 kHz	5 W	20 kHz
462.7000	21	2 W	12.5 kHz	50 W	20 kHz
462.7125	7	2 W	12.5 kHz	5 W	20 kHz
462.7250	22	2 W	12.5 kHz	50 W	20 kHz
467.5500	N/A	N/A	N/A	50 W	20 kHz
467.5675	8	0.5 W	12.5 kHz	0.5 W	12.5 kHz
467.5750	N/A	N/A	N/A	50 W	20 kHz
467.5875	9	0.5 W	12.5 kHz	0.5 W	12.5 kHz
467.6000	N/A	N/A	N/A	50 W	20 kHz
467.6125	10	0.5 W	12.5 kHz	0.5 W	12.5 kHz
467.6250	N/A	N/A	N/A	50 W	20 kHz
467.6375	11	0.5 W	12.5 kHz	0.5 W	12.5 kHz
467.6500	N/A	N/A	N/A	50 W	20 kHz
467.6625	12	0.5 W	12.5 kHz	0.5 W	12.5 kHz
467.6750	N/A	N/A	N/A	50 W	20 kHz
467.6875	13	0.5 W	12.5 kHz	0.5 W	12.5 kHz
467.7000	N/A	N/A	N/A	50 W	20 kHz
467.7125	14	0.5 W	12.5 kHz	0.5 W	12.5 kHz
467.7250	N/A	N/A	N/A	50 W	20 kHz



# Frequencies

## #1 Enh ARK Comms

1. Thinking in terms of channels...
2. GMRS Repeater Pairs with 5 MHz offset
3. While GMRS radios seem to follow the FRS channel line-up, always do a radio-check between radio types to be sure!

Freq (MHz)	FRS CH	FRS PWR	FRS BWTH	GMRS PWR	GMRS BWTH	NOTES
462.5625	1	2 W	12.5 kHz	5 W	20 kHz	Shared Simplex
462.5875	2	2 W	12.5 kHz	5 W	20 kHz	Shared Simplex
462.6125	3	2 W	12.5 kHz	5 W	20 kHz	Shared Simplex
462.6375	4	2 W	12.5 kHz	5 W	20 kHz	Shared Simplex
462.6625	5	2 W	12.5 kHz	5 W	20 kHz	Shared Simplex
462.6875	6	2 W	12.5 kHz	5 W	20 kHz	Shared Simplex
462.7125	7	2 W	12.5 kHz	5 W	20 kHz	Shared Simplex
467.5675	8	0.5 W	12.5 kHz	0.5 W	12.5 kHz	Shared Simplex
467.5875	9	0.5 W	12.5 kHz	0.5 W	12.5 kHz	Shared Simplex
467.6125	10	0.5 W	12.5 kHz	0.5 W	12.5 kHz	Shared Simplex
467.6375	11	0.5 W	12.5 kHz	0.5 W	12.5 kHz	Shared Simplex
467.6625	12	0.5 W	12.5 kHz	0.5 W	12.5 kHz	Shared Simplex
467.6875	13	0.5 W	12.5 kHz	0.5 W	12.5 kHz	Shared Simplex
467.7125	14	0.5 W	12.5 kHz	0.5 W	12.5 kHz	Shared Simplex
462.5500	15	2 W	12.5 kHz	50 W	20 kHz	Shared + GMRS repeater output
462.5750	16	2 W	12.5 kHz	50 W	20 kHz	Shared + GMRS repeater output
462.6000	17	2 W	12.5 kHz	50 W	20 kHz	Shared + GMRS repeater output
462.6250	18	2 W	12.5 kHz	50 W	20 kHz	Shared + GMRS repeater output
462.6500	19	2 W	12.5 kHz	50 W	20 kHz	Shared + GMRS repeater output
462.6750	20	2 W	12.5 kHz	50 W	20 kHz	Shared + GMRS repeater output
462.7000	21	2 W	12.5 kHz	50 W	20 kHz	Shared + GMRS repeater output
462.7250	22	2 W	12.5 kHz	50 W	20 kHz	Shared + GMRS repeater output
467.5500	N/A	N/A	N/A	50 W	20 kHz	GMRS repeater input
467.5750	N/A	N/A	N/A	50 W	20 kHz	GMRS repeater input
467.6000	N/A	N/A	N/A	50 W	20 kHz	GMRS repeater input
467.6250	N/A	N/A	N/A	50 W	20 kHz	GMRS repeater input
467.6500	N/A	N/A	N/A	50 W	20 kHz	GMRS repeater input
467.6750	N/A	N/A	N/A	50 W	20 kHz	GMRS repeater input
467.7000	N/A	N/A	N/A	50 W	20 kHz	GMRS repeater input
467.7250	N/A	N/A	N/A	50 W	20 kHz	GMRS repeater input





# And now, the rules

## #1 Enhanced ARK Comms

---

### ***Part 95, Subpart E***

#### **§95.1705 Individual licenses required; eligibility; who may operate; cooperative use.**

- A valid individual license is required to operate a GMRS station.
- (c)(3) Any individual who holds an individual license may allow anyone to operate his or her GMRS station if necessary to communicate an emergency message.

#### **§95.1731 Permissible GMRS uses.**

- The operator of a GMRS station may use that station for two-way plain language voice communications with other GMRS stations and with FRS units concerning personal or business activities.

#### **§95.1751 GMRS station identification.**

- (a) The GMRS station call sign must be transmitted:
  - (1) Following a single transmission or a series of transmissions; and,
  - (2) After 15 minutes and at least once every 15 minutes thereafter during a series of transmissions lasting more than 15 minutes.



# How has a GMRS license? – UPDATED 9-Dec-2019

## #1 Enhanced ARK Comms

---

<b>Name</b>	<b>GMRS Call</b>	<b>Amateur Call</b>
Al Boleda	WQKV994	-n/c-
Bob Cascone	WQZF436	N6IM
Michael Chang	WRER791	KI6ETU
Lloyd Dickman	WRES218	AF6XM
Doug Frieson	WQMY568	KJ6LLY
Walt Gyer	WRCW310	K6WGY
Judy Halchin	WQXU319	KK6EWQ
Steve Hill	WRCY584	KK6FPI
Mark Laubach	WRCQ964	K6FJC
Al Miller	WRDZ336	K6AB
Jim Oberhofer	WQVI706	KN6PE
Paul Petach	WQJS401	KI6QXV
John Trollman	WRCX904	K6HVJ
Matt Yost	WQXG480	K6FYR



# Why are we looking at GMRS?

## #1 Enhanced ARK Comms

---

### The Goal

Work to make CERT more communications self-sufficient with tighter integration into the broader City response.

### The Plan

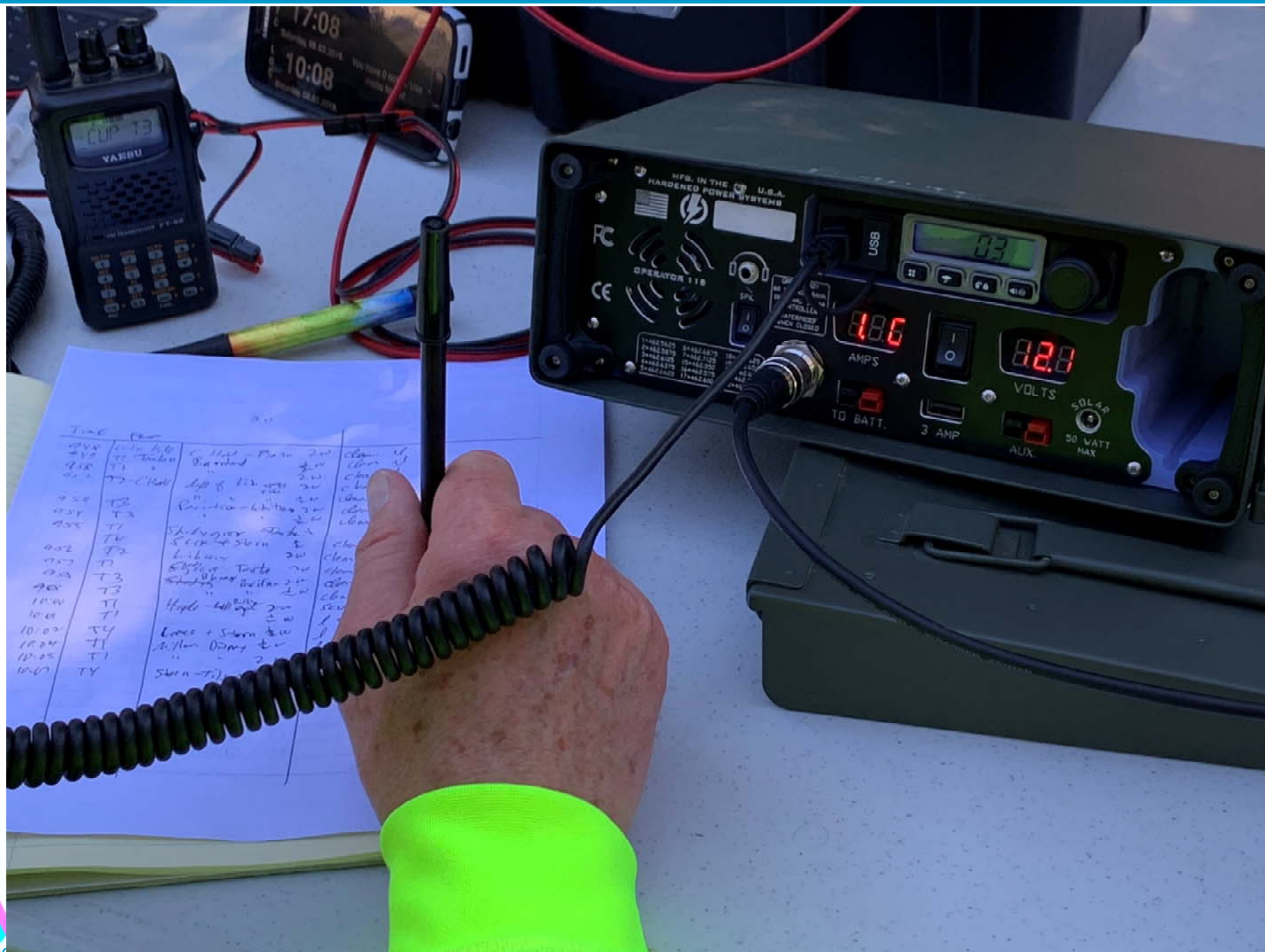
With higher antennas placed at the ARKs connected to a GMRS mobile radio, it is possible that an ARK could communicate with its field teams equipped with FRS. For this solution to work, the following is proposed:

1. Equip each ARK with a GMRS radio system – mobile radio, external antenna, power supply – capable of transmitting at least 5 watts.
2. Recruit CERT members (at least 2 per ARK) who apply for a GMRS radio license.
3. Upgrade City FRS radios to newer models that can output 2 watts.
4. Develop a more structured communications training for CERT.



# GMRS radio pack

## #1 Enhanced ARK Comms



Time	Loc	Notes	Power	Channel
8:58	T3	1100 - 1100	2W	Chan 11
9:18	T3	1100 - 1100	2W	Chan 11
9:28	T3	1100 - 1100	2W	Chan 11
9:38	T3	1100 - 1100	2W	Chan 11
9:48	T3	1100 - 1100	2W	Chan 11
9:58	T3	1100 - 1100	2W	Chan 11
10:08	T3	1100 - 1100	2W	Chan 11
10:18	T3	1100 - 1100	2W	Chan 11
10:28	T3	1100 - 1100	2W	Chan 11
10:38	T3	1100 - 1100	2W	Chan 11
10:48	T3	1100 - 1100	2W	Chan 11
10:58	T3	1100 - 1100	2W	Chan 11
11:08	T3	1100 - 1100	2W	Chan 11
11:18	T3	1100 - 1100	2W	Chan 11
11:28	T3	1100 - 1100	2W	Chan 11
11:38	T3	1100 - 1100	2W	Chan 11
11:48	T3	1100 - 1100	2W	Chan 11
11:58	T3	1100 - 1100	2W	Chan 11
12:08	T3	1100 - 1100	2W	Chan 11
12:18	T3	1100 - 1100	2W	Chan 11
12:28	T3	1100 - 1100	2W	Chan 11
12:38	T3	1100 - 1100	2W	Chan 11
12:48	T3	1100 - 1100	2W	Chan 11
12:58	T3	1100 - 1100	2W	Chan 11
13:08	T3	1100 - 1100	2W	Chan 11
13:18	T3	1100 - 1100	2W	Chan 11
13:28	T3	1100 - 1100	2W	Chan 11
13:38	T3	1100 - 1100	2W	Chan 11
13:48	T3	1100 - 1100	2W	Chan 11
13:58	T3	1100 - 1100	2W	Chan 11
14:08	T3	1100 - 1100	2W	Chan 11
14:18	T3	1100 - 1100	2W	Chan 11
14:28	T3	1100 - 1100	2W	Chan 11
14:38	T3	1100 - 1100	2W	Chan 11
14:48	T3	1100 - 1100	2W	Chan 11
14:58	T3	1100 - 1100	2W	Chan 11
15:08	T3	1100 - 1100	2W	Chan 11
15:18	T3	1100 - 1100	2W	Chan 11
15:28	T3	1100 - 1100	2W	Chan 11
15:38	T3	1100 - 1100	2W	Chan 11
15:48	T3	1100 - 1100	2W	Chan 11
15:58	T3	1100 - 1100	2W	Chan 11
16:08	T3	1100 - 1100	2W	Chan 11
16:18	T3	1100 - 1100	2W	Chan 11
16:28	T3	1100 - 1100	2W	Chan 11
16:38	T3	1100 - 1100	2W	Chan 11
16:48	T3	1100 - 1100	2W	Chan 11
16:58	T3	1100 - 1100	2W	Chan 11
17:08	T3	1100 - 1100	2W	Chan 11
17:18	T3	1100 - 1100	2W	Chan 11
17:28	T3	1100 - 1100	2W	Chan 11
17:38	T3	1100 - 1100	2W	Chan 11
17:48	T3	1100 - 1100	2W	Chan 11
17:58	T3	1100 - 1100	2W	Chan 11
18:08	T3	1100 - 1100	2W	Chan 11
18:18	T3	1100 - 1100	2W	Chan 11
18:28	T3	1100 - 1100	2W	Chan 11
18:38	T3	1100 - 1100	2W	Chan 11
18:48	T3	1100 - 1100	2W	Chan 11
18:58	T3	1100 - 1100	2W	Chan 11
19:08	T3	1100 - 1100	2W	Chan 11
19:18	T3	1100 - 1100	2W	Chan 11
19:28	T3	1100 - 1100	2W	Chan 11
19:38	T3	1100 - 1100	2W	Chan 11
19:48	T3	1100 - 1100	2W	Chan 11
19:58	T3	1100 - 1100	2W	Chan 11
20:08	T3	1100 - 1100	2W	Chan 11
20:18	T3	1100 - 1100	2W	Chan 11
20:28	T3	1100 - 1100	2W	Chan 11
20:38	T3	1100 - 1100	2W	Chan 11
20:48	T3	1100 - 1100	2W	Chan 11
20:58	T3	1100 - 1100	2W	Chan 11
21:08	T3	1100 - 1100	2W	Chan 11
21:18	T3	1100 - 1100	2W	Chan 11
21:28	T3	1100 - 1100	2W	Chan 11
21:38	T3	1100 - 1100	2W	Chan 11
21:48	T3	1100 - 1100	2W	Chan 11
21:58	T3	1100 - 1100	2W	Chan 11
22:08	T3	1100 - 1100	2W	Chan 11
22:18	T3	1100 - 1100	2W	Chan 11
22:28	T3	1100 - 1100	2W	Chan 11
22:38	T3	1100 - 1100	2W	Chan 11
22:48	T3	1100 - 1100	2W	Chan 11
22:58	T3	1100 - 1100	2W	Chan 11
23:08	T3	1100 - 1100	2W	Chan 11
23:18	T3	1100 - 1100	2W	Chan 11
23:28	T3	1100 - 1100	2W	Chan 11
23:38	T3	1100 - 1100	2W	Chan 11
23:48	T3	1100 - 1100	2W	Chan 11
23:58	T3	1100 - 1100	2W	Chan 11

# Why are we looking at GMRS?

## #1 Enhanced ARK Comms

---

### The Test...

Test 1. Basic GMRS coverage test, DeAnza ARK. 6-July-2019.

Five field teams deployed. Mobile GMRS radios with elevated antennas provided good coverage, way beyond the boundary of the DeAnza ARK zone. Some terrain fade observed.

Test 2. GMRS & City FRS, Creekside ARK. Aug 3, 2019. Tested with City FRS radios.

Established a base station operating at 5 watts, mag-mount on the ARK roof, with city FRS radios in the field. Overall, coverage throughout ARK Zone 6 had plenty of L&C (Loud and Clear) reports with the City FRS radios.

Test 3. GMRS & City FRS, Monta Vista. Aug 17, 2019.

Similar to test 2 except with more hilly terrain, high-gain Mast antenna. Coverage confirmed at several low spots (Blue Pheasant Restaurant, Blackberry Farm, Stevens Dam lower parking lot). In a few cases, only the 2.0w HTs (not 0.5w) could be heard by NCS.

Test 4. GMRS in Comm 469.

Tested mobile to mobile GMRS coverage. Good coverage at 5 watts with external mobile antenna to all Allied Health facilities, CuSD, and ARK locations; no real coverage with FRS/GMRS fixed antenna HTs.

# The Test at Creekside ARK

## #1 Enhanced ARK Comms



# What to help?

## #1 Enhanced ARK Comms

---

1. First, we are not moving away from Amateur Radio.
2. To develop a level of competency with CERT at the ARKs, we need folks willing to provide some coaching.
3. Get familiar with GMRS. Whereas the City is funding a “mobile and mag mount” at each ARK, we will need field responders who could lead CERT with some “*on-the-job-training*” if necessary.
4. Get your GMRS License. You could act as a “control operator” (not a GMRS term) and jump-start CERT as a GMRS Net Control operator.
5. We have terrific tools in our Radios. Help get CERT excited with something similar that they can own.



# Thank you

*Any Questions?*





