

2022 Wildland Fire Canyon Trails Fire Evacuation Communications Exercise Prep

May 5, 2022
Jim Oberhofer



CARES mission

The mission of Cupertino Amateur Radio Emergency Service (CARES) is to maintain and train Amateur Radio volunteers capable of providing professional emergency communications, increasing the City's emergency response effectiveness, and speeding the recovery effort.



A lot has changed over the last 5 years

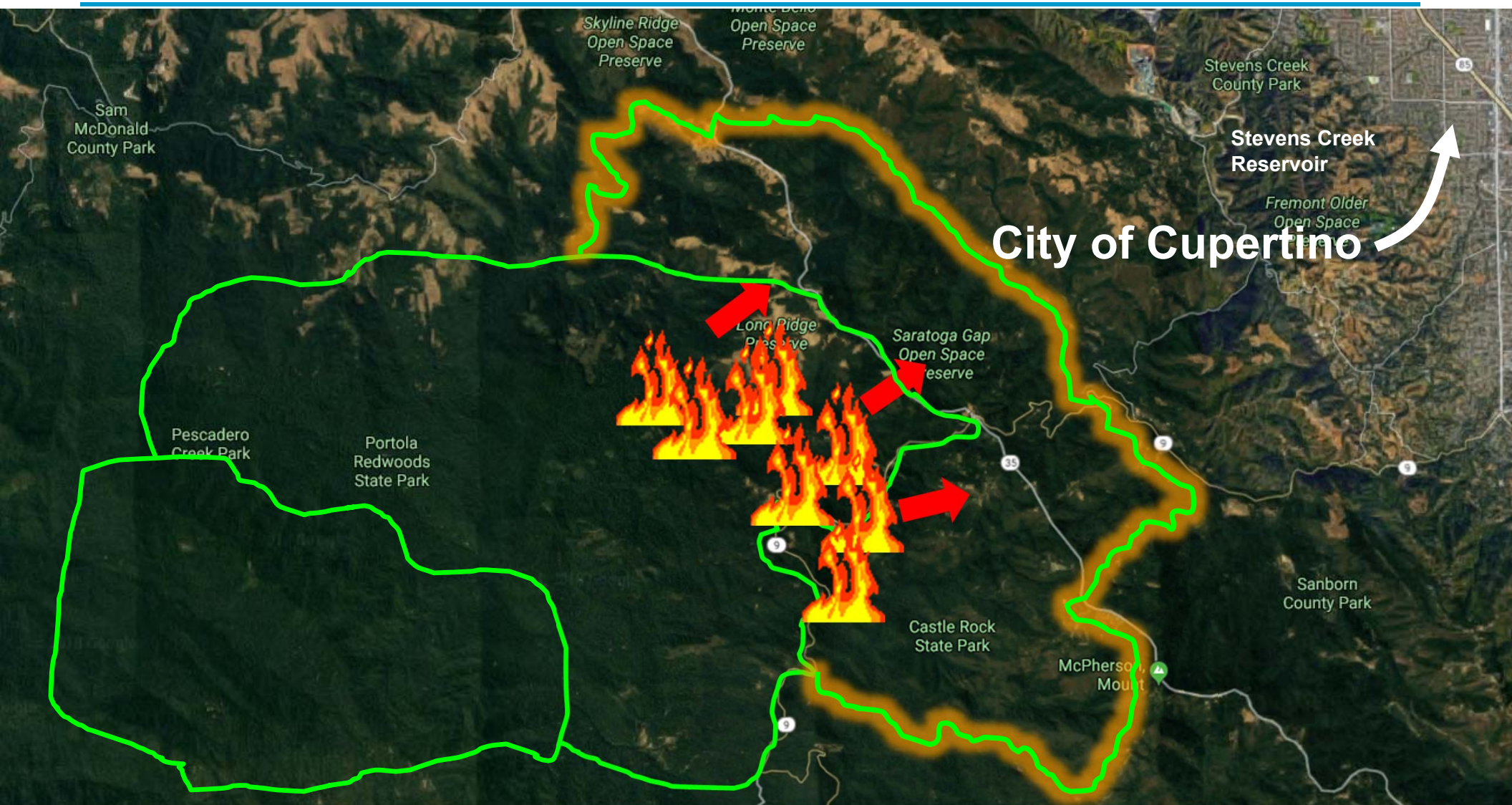
- **2018 – CUP-18-35T, Ember Watch Exercise**
- **2019 – Cupertino PSPS events**
- **2020 – CZU Lightening Complex fire**
- **2021 – Zonehaven Introduction**
- **2022 – Thinking about local evacuations**

- **2022 – CUP-22-39T, CCC Evacuation Exercise**



2018 – CUP-18-35T, Ember Watch exercise

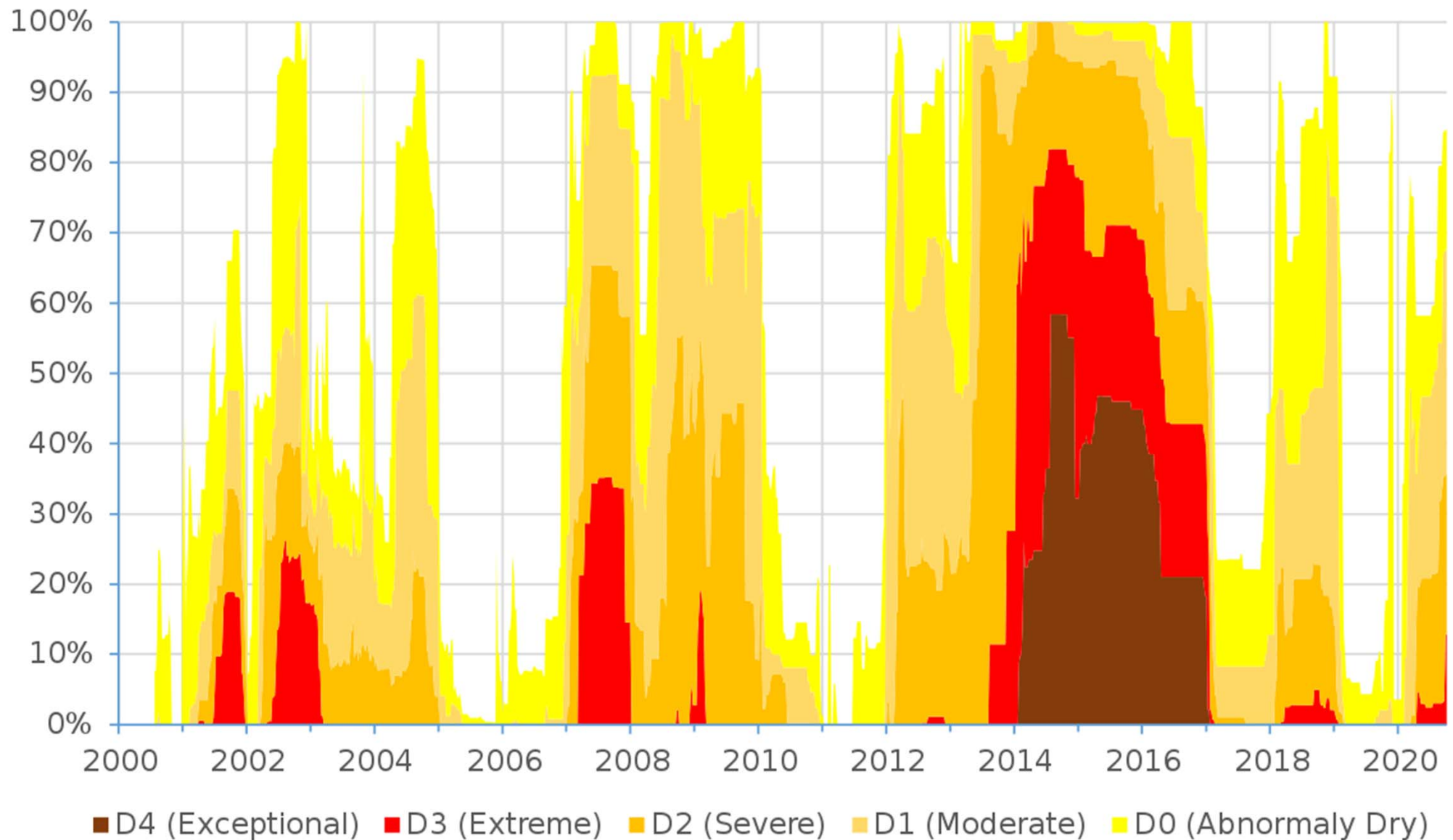
Scenario: southwest winds will pick up and cause the fire to jump Rt 35



2018 – CUP-18-35T, Ember Watch exercise

What was the trigger?

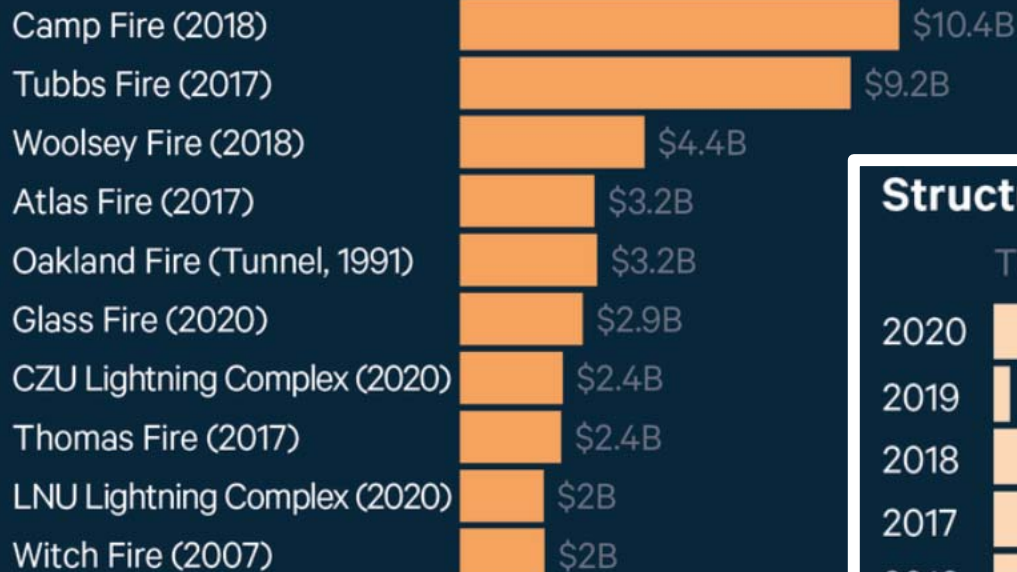
Drought area in California



2019 – October PSPS events and US Wildfire Trends through 2020

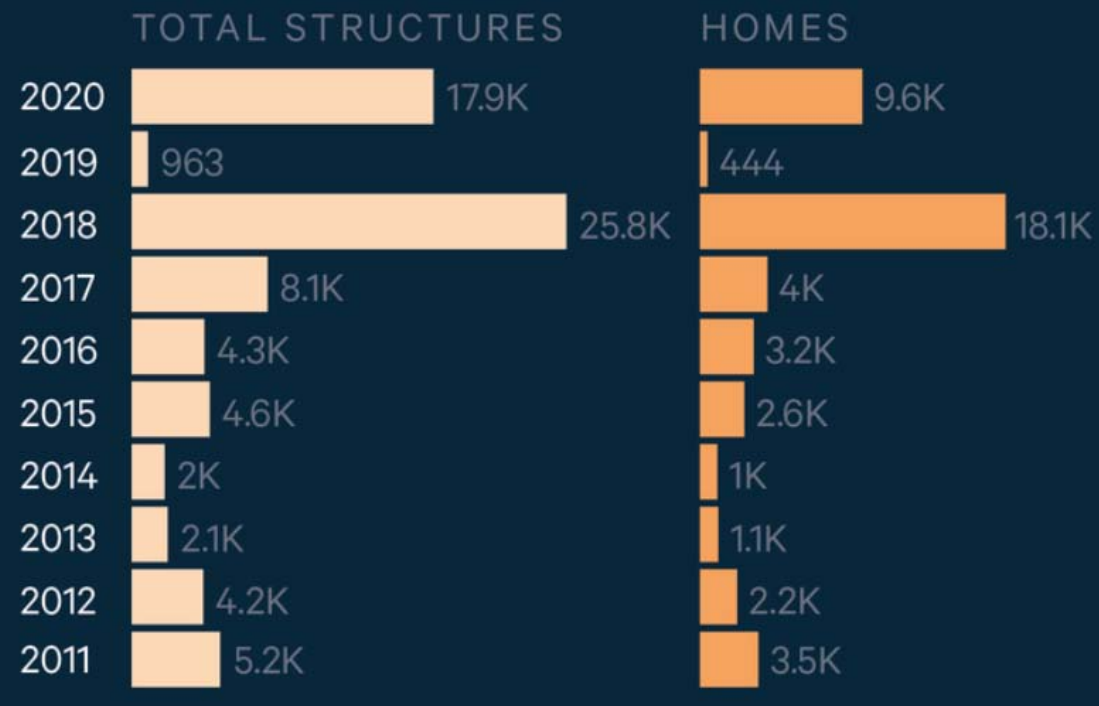
Most Destructive Fires by Financial Losses

ESTIMATED INSURED LOSSES (\$2020)



Of the ten most financially destructive fires ever to occur in the United States, eight occurred in the past five years. All ten occurred in California.

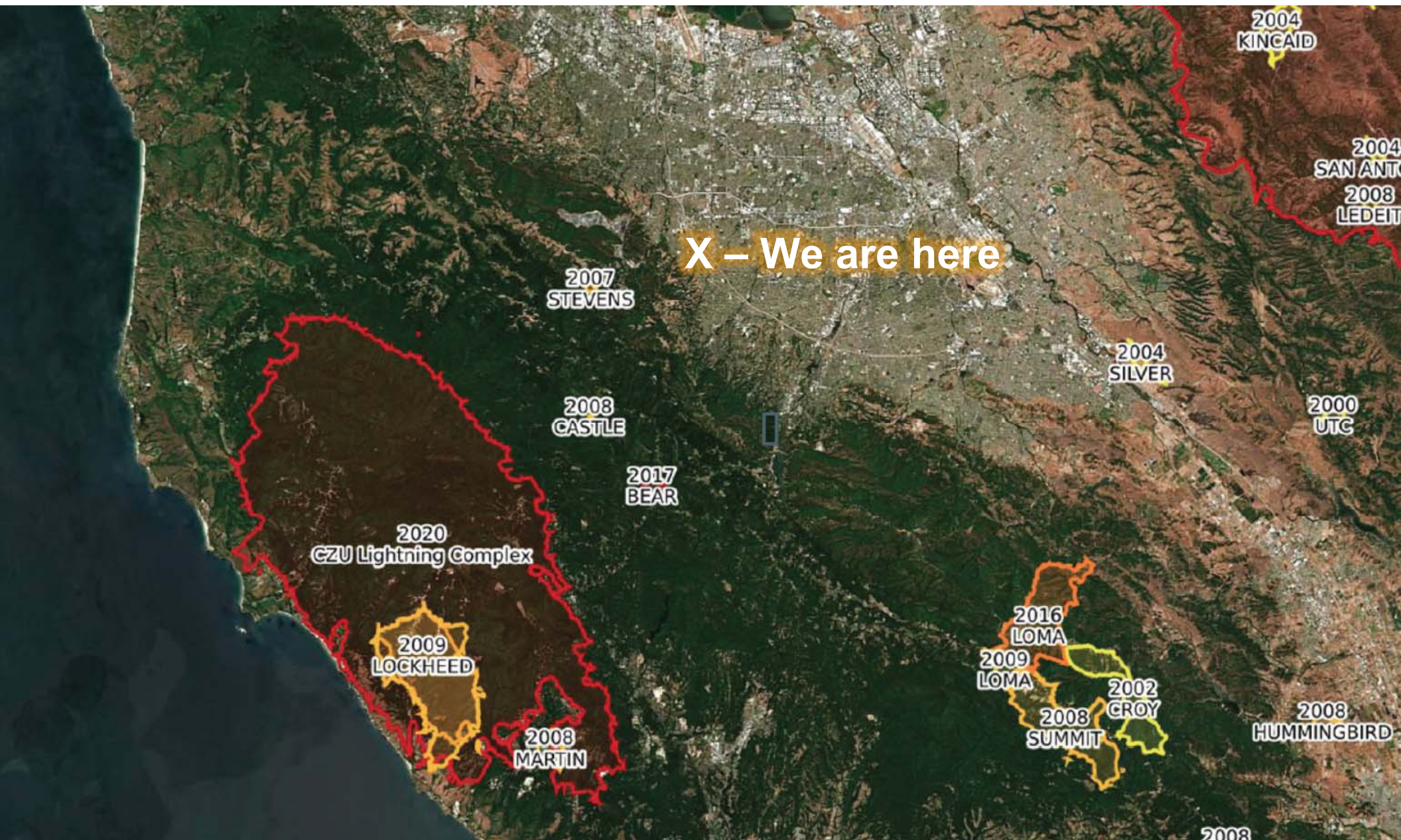
Structures Destroyed by Wildfires



The majority of structured destroyed by fires in the past ten years were lost in just two recent years: 2018 and 2020.

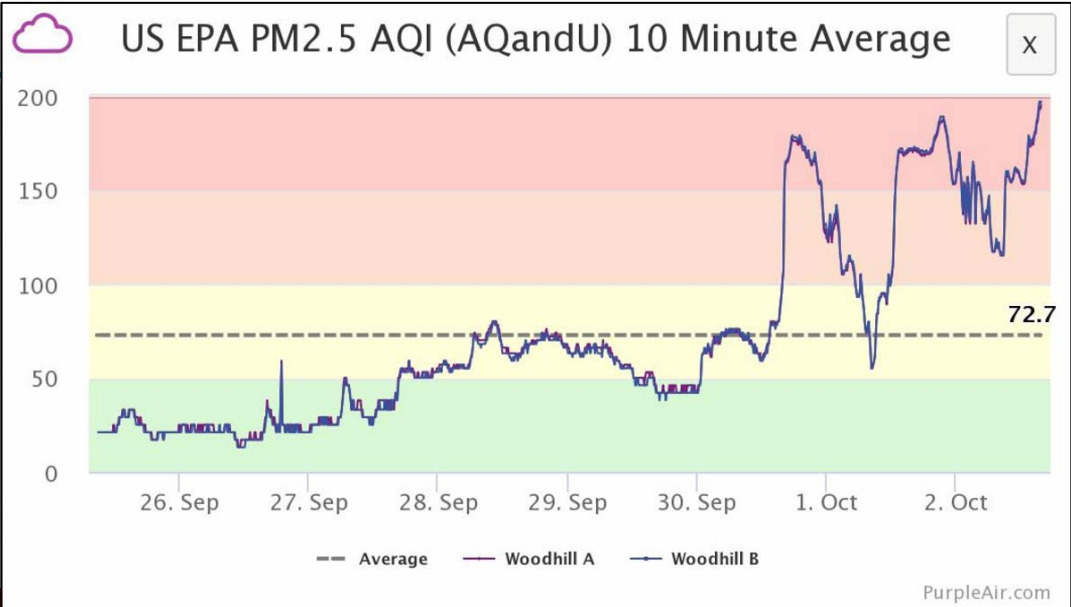


2020 – CZU Lightning Complex fire



2020 – CZU Lightning Complex fire

Take-aways



Axis-BonnyDoon X:-14.88 Y:-83.89 Z:1.0 RidgeWireless.mlyon.08-19T23:22 © Nevada Seismo Lab 2020/08/19 23:22:31.48

Cupertino ARES/RACES

2021 – Zonehaven Evacuation Management

What Zonehaven does

1. Real-time map-based information allows everyone to see the same information
2. Reduces time to get information to the community
3. Integrates with existing notification channels (AlertSCC)
4. Supports multi-agency coordination of evacuations
5. Incorporates local information that supports quicker evacuations
6. Accessible by the community

Protective actions



2021 – Zonehaven Evacuation Management

<https://www.sccfd.org/be-evacuation-ready>

California has adopted standard evacuation terminology:

- ***Evacuation Warning:*** There is a potential threat to life and/or property. Those who require additional time to evacuate, and those with pets and livestock should leave now.
- ***Evacuation Order:*** There is an immediate threat to life. This is a lawful order to leave now. The area under evacuation order is now lawfully closed to public access.



<https://community.zonehaven.com>



CITY OF CUPERTINO

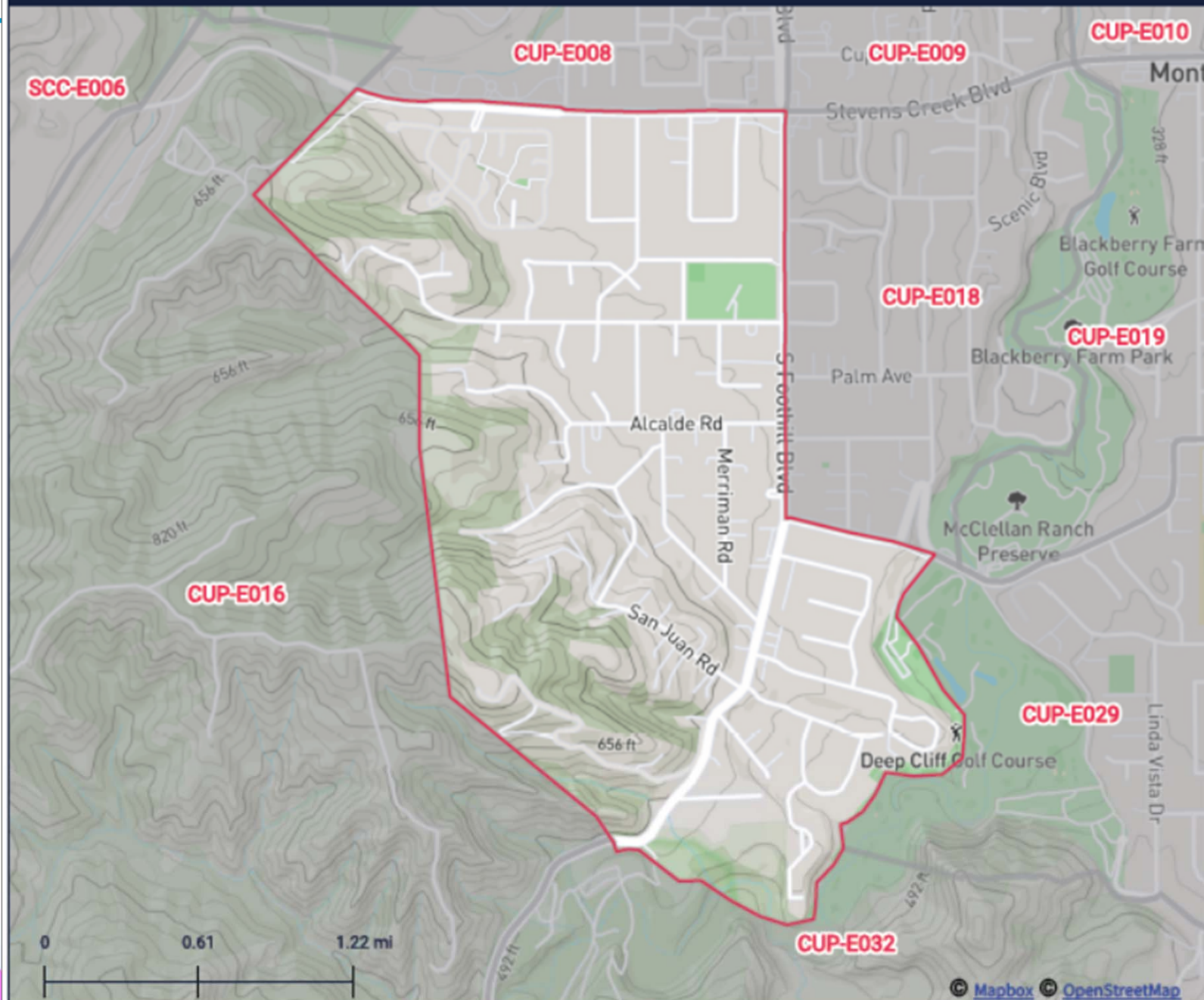
- North of: Stevens Canyon Road, Kester Drive
- South of: Permanente Road, Stevens Creek Boulevard
- East of: Voss Avenue, Mercedes Road
- West of: McClellan Road, Club House Lane, South Foothill Boulevard



US-CA-XSC-CUP-E017

Neighborhoods surrounding Lockwood Dr,
Voss Ave, San Juan Rd, and Riverside Dr

EVACUATION ZONE MAP



ZONE SUMMARY

AGENCY LEADS

LINKS

Canyon Trail Fire Evacuation Comm Exercise Prep

2022 – Thinking of Evacuations

Cupertino Office of Emergency Management

2022 Golden Eagle Exercise, Thursday 19-May, 9:00a-12:00p

- Partial functional exercise involving Cupertino EOC staff and first responder partner agencies.
- It focuses on response coordination at the onset of a wildfire threatening a community.
- Fire partners locate an incident command post in the wildland urban interface of west Cupertino.

Objectives

1. Establish unified command (UC) consisting of Law, Fire, and OEM
2. UC identifies evacuation zones subject to an *Evacuation Warning & Order*
3. Develop appropriate evacuation messaging for AlertSCC



2022 – Thinking of Evacuations

Cupertino Citizen Corps

Canyon Trail Fire Exercise, Saturday 21-May, 8:30a-12:00p

- Test the CCC communications capabilities through a field deployment.
- This is in response to an evacuation warning and order issued due to a wildland fire threat to the city.

Objectives

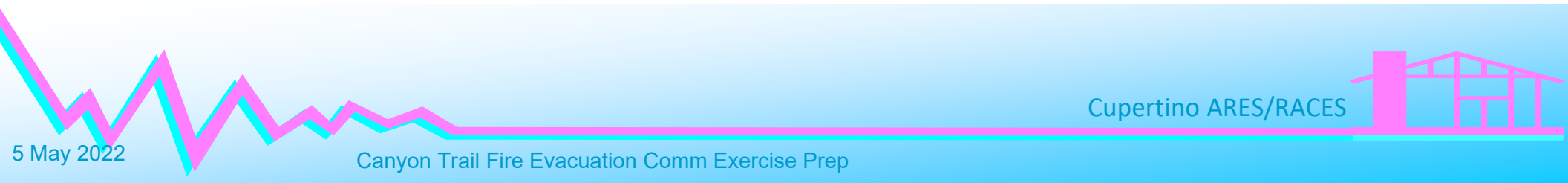
1. The Resource nets is operated per standard operating procedures.
2. Voice messages are passed by radio between field RACES and the ICP.
3. Voice messages are passed by radio between CCC neighborhood responders and the local ARK.
4. Voice & packet messages are passed between the ICP and County EOC.
5. Execute the Demob Process for all responders per the current procedure.



2022 Canyon Trail Fire

***** THIS IS DRILL TRAFFIC ****

The City is threatened by a wildland fire approaching from the Southwest.



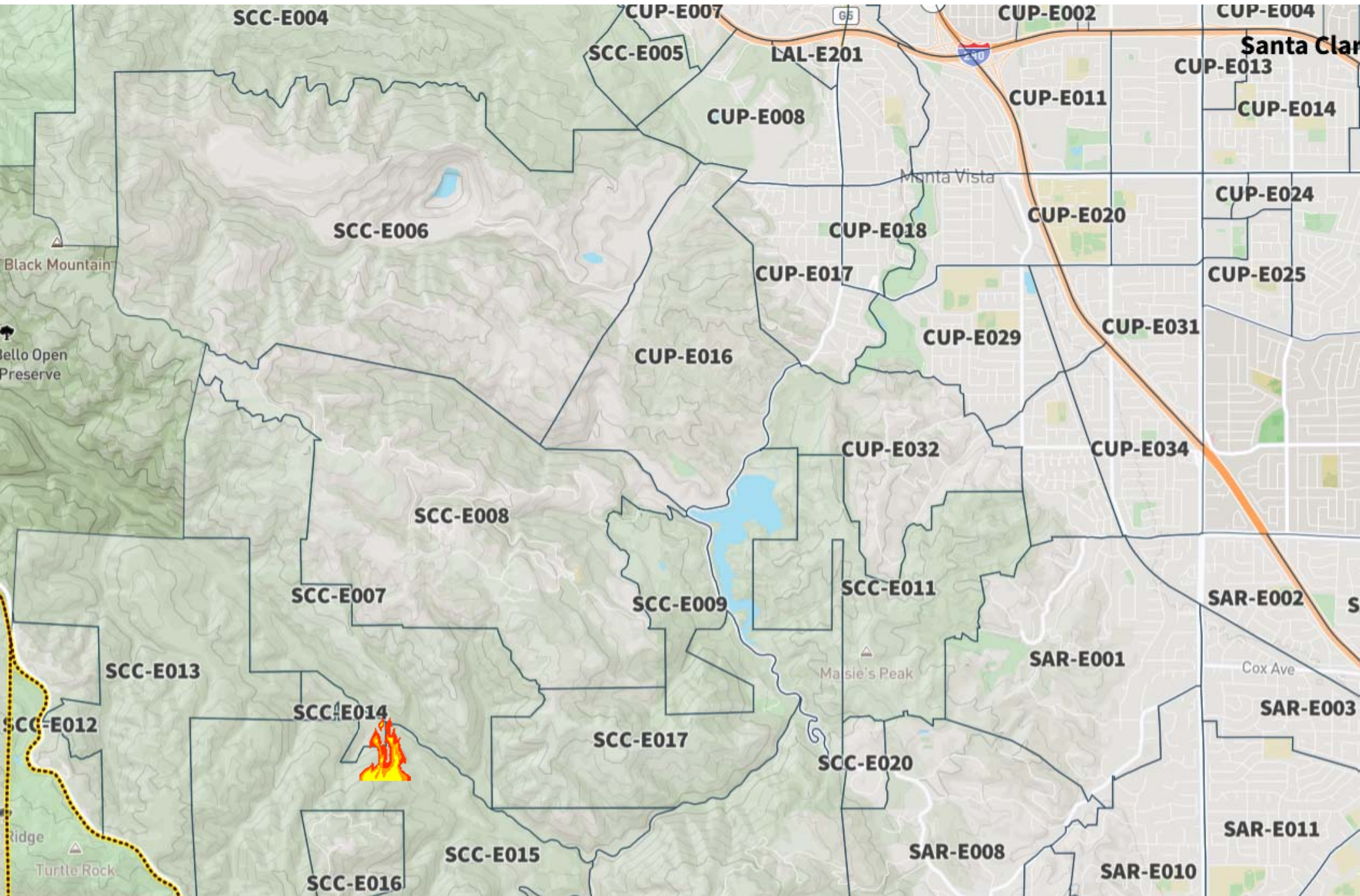
Cupertino ARES/RACES

5 May 2022

Canyon Trail Fire Evacuation Comm Exercise Prep

Friday Afternoon, 12:25

Fire starts near Canyon Trail by Stevens Canyon Road



Fire spreading to the NE, Cupertino EOC to Level 3, ICP/UC established

E/O – Evacuation Order
E/W – Evacuation Warning

The map displays various evacuation zones in Santa Clara County, California. A wildfire, represented by a flame icon, is located in the southwestern part of the county, near the intersection of SCC-E013 and SCC-E017. The wildfire is surrounded by an orange outline, indicating an Evacuation Order (E/O) zone. Other zones are marked with orange text for Evacuation Warning (E/W) and red text for Evacuation Order (E/O). A red star labeled 'ICP' is located in the central-northern part of the county, near the intersection of CUP-E018 and CUP-E017. The map also shows major roads, including Highway 65 and Highway 88, and geographical features like Black Mountain and Turtle Rock.

Friday Afternoon, 19:00

Request for CCC support

Cupertino OEM requests CCC to activate Saturday morning in preparation to do the following:

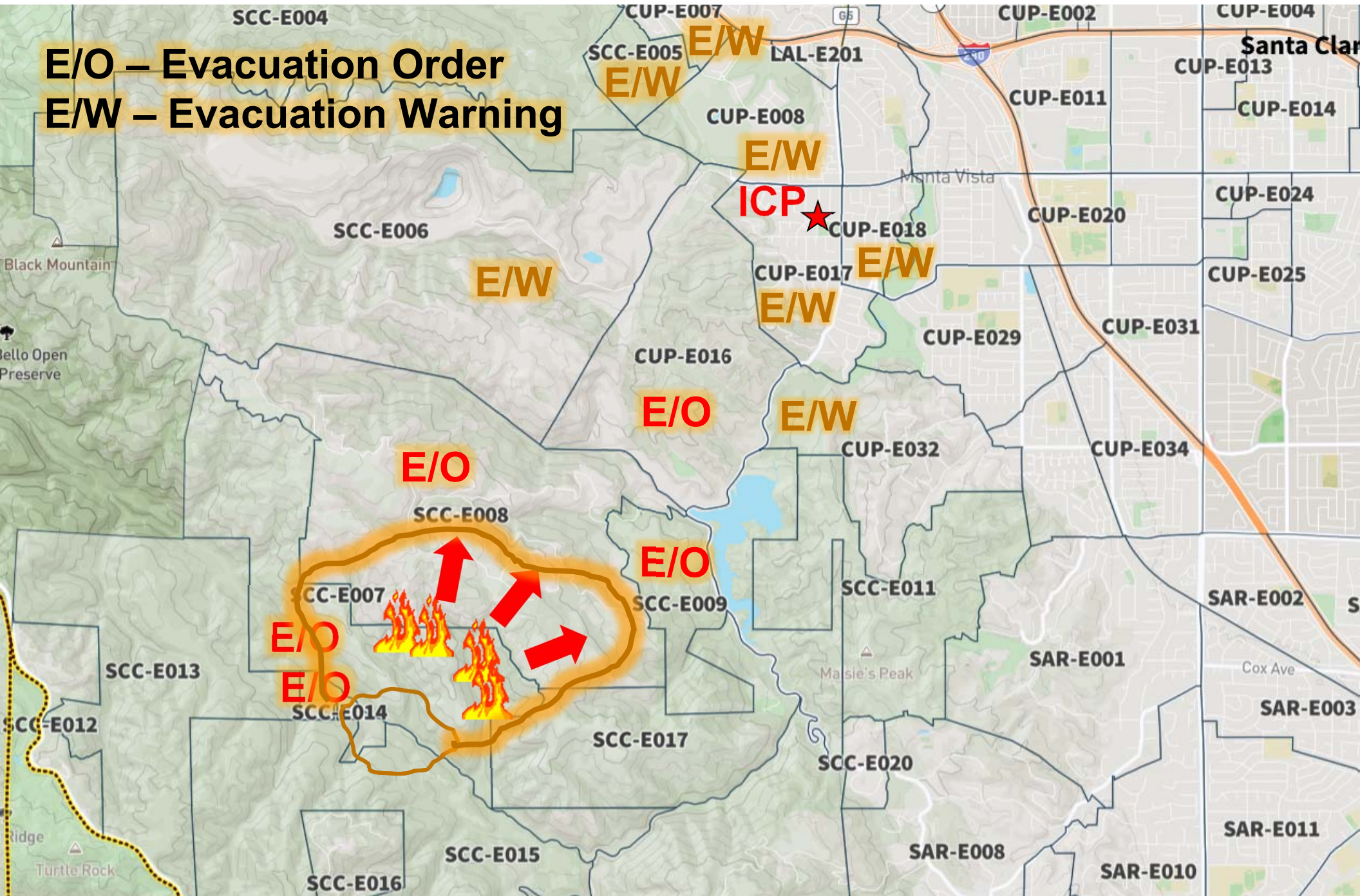
1. Deploy Comm 469 to support the ICP.
2. Provide field observations on the evacuation routes.
3. Receive reports from impacted neighborhoods on their evacuation readiness and status.
4. Coordinate with senior residence communities on their evacuation readiness and status.
5. Support Shelter or TEP operations as required.

(TEP – Temporary Evacuation Point)



Saturday Morning, 09:00

Westerly winds gusts push the fire further northeast



Our artificialities

- There are elements of our response that may not actually occur as described in our exercise plans during a real fire.
>>> Primary Objective: *message passing practice*
- Weather conditions are clear; winds are out of the Southwest.
- We will simulate City OEM Staff is present at the ICP.
- Wired and cell phones are working but are not reliable due to the large amount of cellular traffic due to the local fire.
- CCC meets the conditions of being *First Responders* by the Sheriff's Office under which we can respond to and operate within the evacuation area.
>>> *These specific conditions have not been defined.*



Who are the players?

Wildland Fire Scenario

CAL Fire	<ul style="list-style-type: none">• Responds to fires on public lands, the water shed, and privately-owned wildlands
County Fire	<ul style="list-style-type: none">• Mutual Aid to CAL FIRE• Responds to fires within their jurisdiction• Responds to medical emergencies
County Sheriff	<ul style="list-style-type: none">• Maintains law and order• Manages traffic control, road closures, evacuations
Public Health	<ul style="list-style-type: none">• Monitors air quality
Cupertino EOC	<ul style="list-style-type: none">• Staffs the EOC, ICP, monitors the situation• Provides community information• Works with Unified Command to make decisions that serve the best interest of its residents• Supports the incident with material, logistical support, and resources as necessary
Citizen Corps	<ul style="list-style-type: none">• Provides CERT, neighborhood, medical, and communications resources as needed



What are the assignments? #1

Allied Health Agencies

1. Senior living facilities that include residences for independent living, assisted living, and skilled nursing.
2. Four facilities with skilled nursing are in west Cupertino:
 - a. The Forum
 - b. Sunny View Retirement Community
 - c. Marianist Center
 - d. Cupertino Healthcare and Wellness
3. These facilities should report their readiness status and progress in the event of an evacuation order.
4. Positions may be staffed by CARES or CCC volunteers depending on available resources; Amateur Radio, GMRS, or FRS.



What are the assignments? #2

Route Observers

1. There are several traffic points in west Cupertino on which the city requests information.
2. Traffic flow, congestion, information sharing, relaying received reports from evacuating residents (reluctant residents, livestock), etc.
3. Positions may be staffed by CARES, CERT, Block Leader, or Neighborhood Watch volunteers.



What are the assignments? #3

Stevens Creek Dam Site

1. Undoubtedly, CAL Fire will be using the reservoir for water pickup and fire drops.
2. This position will be monitoring the CAL Fire operations and reports status or issues if they arise.
3. Positions may be staffed by CARES.



What are the assignments? #4

Organized Neighborhoods

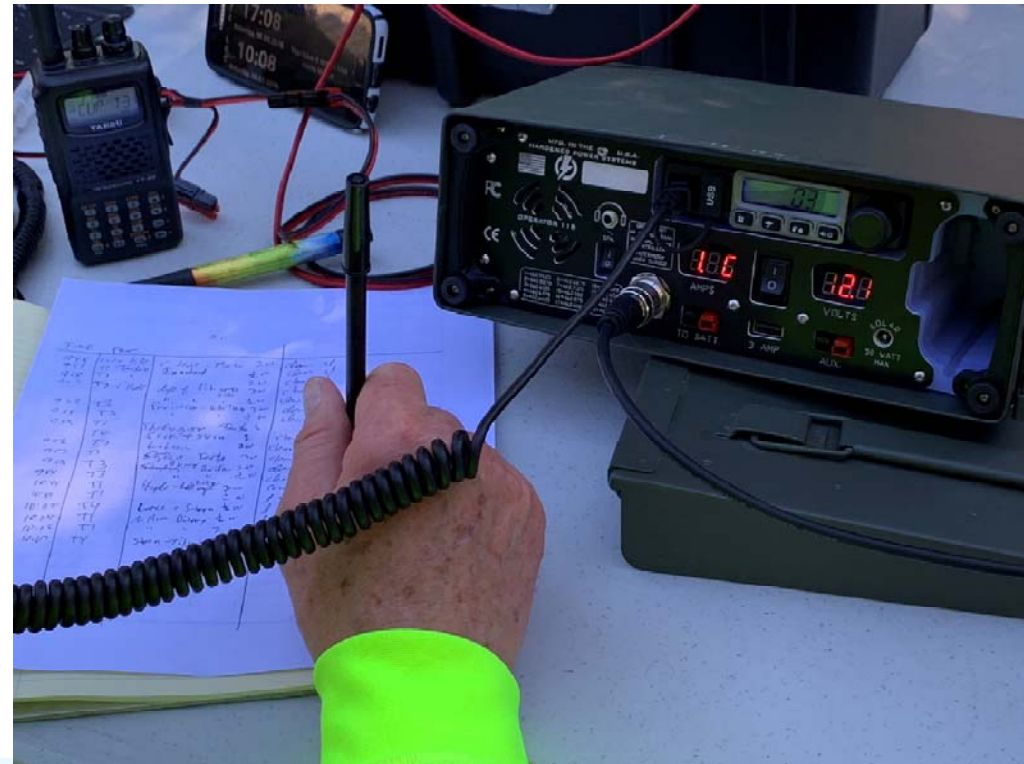
1. There are several organized neighborhoods in west Cupertino.
2. These neighborhoods should report their readiness status, local medical issues, reluctant evacuees, and progress in the event of an evacuation order.
3. Positions may be staffed by CERT, Block Leader, or Neighborhood Watch volunteers.



What are the assignments? #5

Monta Vista ARK (Zone 1)

1. This location will be the staging location when we get started and where the Neighborhood net will be run for FRS users.
2. Two operators will be required:
 - a) Zone Net Control: will take check-ins, status, and reports from Zone 1 neighborhoods
 - b) ICP relay station. Forwards neighborhood reports to the ICP
3. Positions will be staffed by a) a GMRS-licensed volunteer, and b) CARES volunteer.

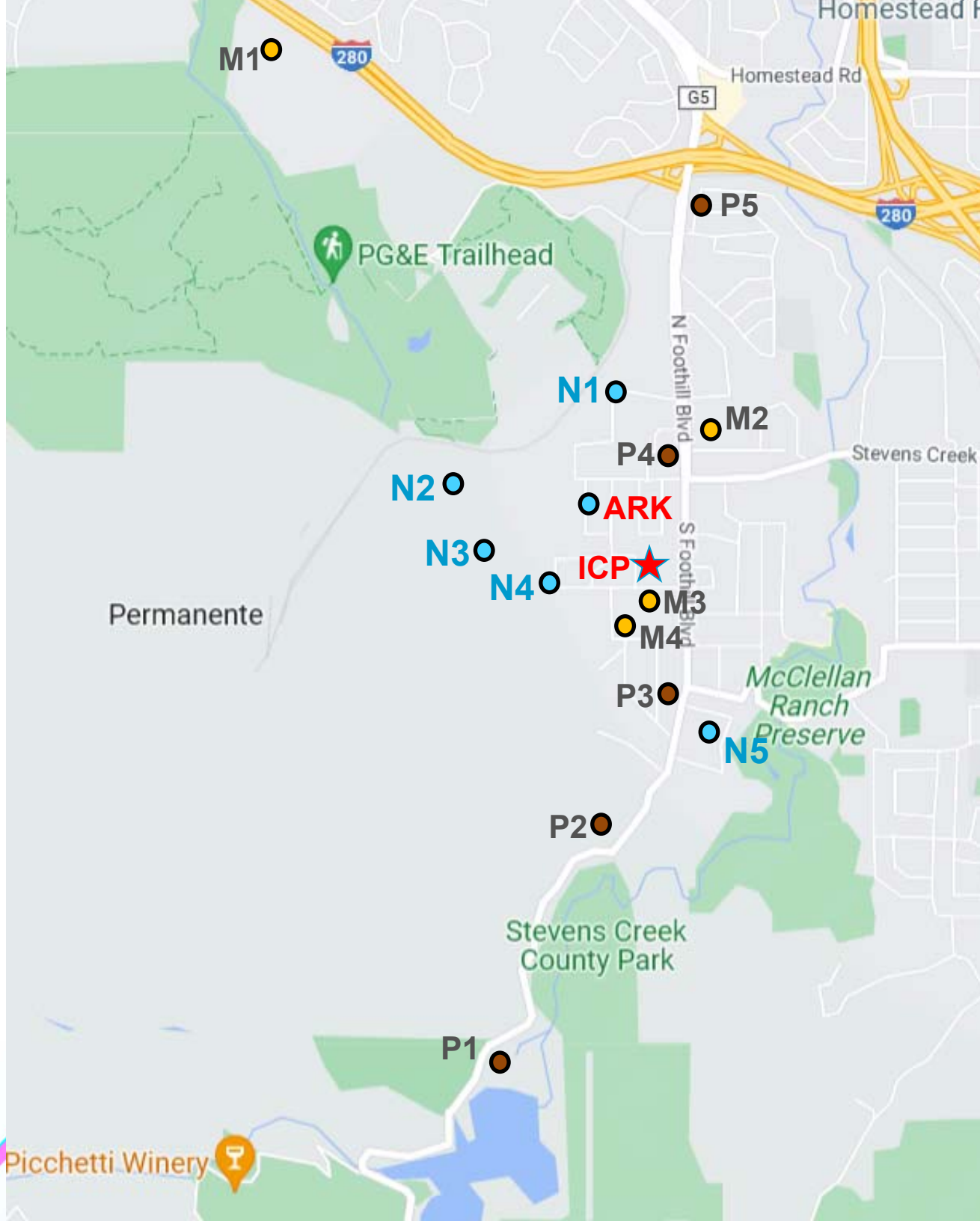


What are the assignments? #6

Public Safety Comm Vehicle – Comm 469

1. At the request of the ICP, Comm 469 will be deployed to the ICP for local evacuation support.
2. Staffing is required to cover the Cupertino resource and message nets, and county voice and digital message nets.
3. Positions will be staffed by CARES.





Assignments

Evacuation Scenario

Communications

ICP – Incident Cmd Post
ARK – Monta Vista ARK

Neighborhoods

N1 – Anthony/Salem
N2 – De Anza Oaks
N3 – Standing Oaks
N4 – Voss
N5 – Riverside St Andrews

Allied Health Facilities

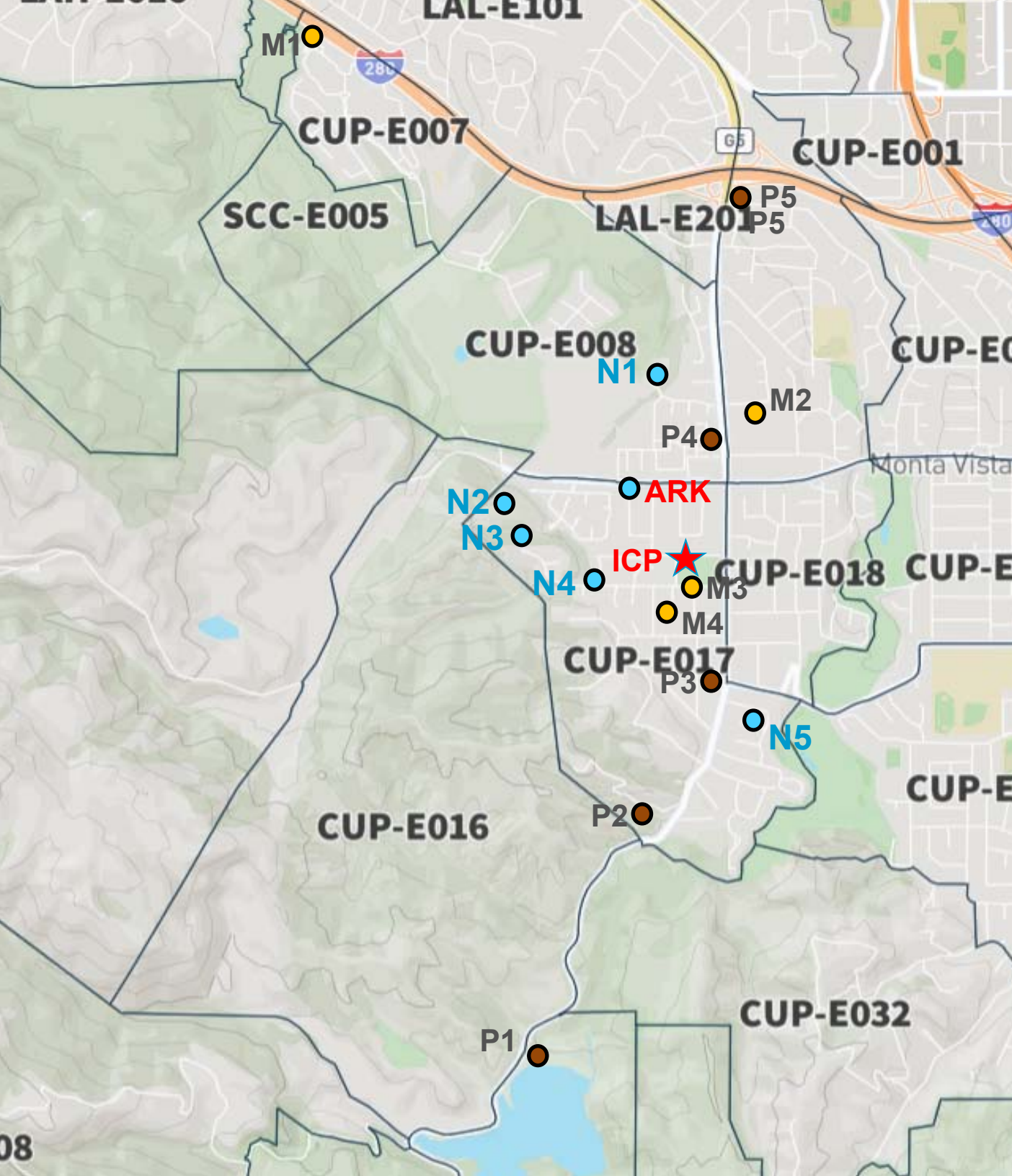
M1 – The Forum
M2 – Sunny View Retirement
M3 – Cupertino Health...
M4 – Marianist Center

Observation/Route Posts

P1 – Post 1 Stevens Crk Dam
P2 – Post 2 SC County Park
P3 – Post 3 McClellan Rd
P4 – Post 4 Stevens Crk Blvd
P5 – Post 5 Cupertino Exit
P? – Others?

Others?

TEP - Temporary Evac Point



Assignments

Evacuation Scenario

Communications

ICP – Incident Cmd Post

ARK – Monta vista ARK

Neighborhoods

N1 – Anthony/Salem

N2 – De Anza Oaks

N3 – Standing Oaks

N4 – Voss

N5 – Riverside St Andrews

Allied Health Facilities

M1 – The Forum

M2 – Sunny View

M3 – Cupertino Health...

M4 – Marianist Center

Observation/Route Posts

P1 – Post 1 Stevens Crk Dam

P2 – Post 2 SC County Park

P3 – Post 3 McClellan Rd

P4 – Post 4 Stevens Crk Blvd

P5 – Post 5 Cupertino Exit

P? – Others?

Others?

TEP - Temporary Evac Point

Simulating the event

Wildland Fire Scenario

1. All field responders will receive a scenario sheet for your specific assignment.
2. It will include the current conditions, what you see, what you hear, and when it occurs.
3. At the assigned time, read that item, and take the necessary action.

The following is provided as general information for your consideration during this drill.

Location	Monta Vista Ark, Stevens Creek Blvd and South Foothill Blvd
General Situation	<ul style="list-style-type: none">• Power has been out throughout the city since the 7.5 earthquake at 6:00 estimate as to when the power will be restored.• The wired and cell phone network is overloaded – no dial tone the last checked.• You filled a water bottle when you left your house and observed that the pressure was low.• KCBS is on the air, one of the few stations still broadcasting. They reported heavy damage from Napa to Carmel. No word of a Tsunami – that's everyone's mind... but it is still early☺.
Weather:	Weather is current conditions at the time of the drill.

The following are the things you observe on your arrival at your assignment. These are what you see and interactions that you have with the people around you.

INSTRUCTIONS: Write the time you arrived in the blanks below, and pass the message at the appropriate time.

Local Situation on your arrival... this is what you observe.	<ul style="list-style-type: none">• As you arrive at the Ark, it is still being set up. There are only a handful of members covering all positions; 2 more walk in right after you. Not all positions have been staffed, and some ICS members are covering multiple positions.• As you arrived, you feel a good-sized aftershock -- you think this was the cause.• Getting to the Ark was not difficult. Even though the traffic lights were out, there wasn't much traffic on the roads, only the constant wail of sirens.• Fire Units Engine 7 and Battalion 7 are not there. The station is locked.• YOUR TACTICAL CALL IS MONTA VISTA ARK.
_____ + 5 minutes	<ul style="list-style-type: none">• You see several PG&E trucks heading West on Stevens Creek in the direction of the fire. What looks like smoke rising up from what you think is the PG&E Substation. CREATE a brief informational message and send to the EOC.



Message Handling

Three types of messages



1. *Third party traffic*

- Passed on behalf of a 3rd party; an official, traceable message
- *However*, if it is not clear to you, it may not be clear to the EOC. It's Ok to coach the originator and suggest clarity. But, it ultimately must be the originator's message.

2. *Information / Observation / Reports*

- Self-originated messages
- These messages may not be written and a written response may not be required. In this case, you control what the message text will be. When in doubt, write it down anyway.

3. *Administrative traffic*

- Can be a question to the NCO, Shift Supervisor, or other station, such as requesting a relief, inquiry on meals, requests for a station to meet you on a TAC-3, etc.



Message Handling

Three types of messages

1. *Third party traffic*

- Passed on behalf of a 3rd party; an official, traceable message

Example:

Net Control, Monta Vista ARK with a Routine message.

Net Control, this is Sheriff Shadow with an **Urgent** message for the **ICP**.

1. Incident Name (Optional):	Priority E, U, R :	Message No:
2. To (Name and Position): ICP		
3. From (Name and Position): Sheriff Liaison		
4. Subject: Evacuation Order	5. Date: 5/12/22	6. Time: 10:15
7. Message: Request Evacuation Order set for CUP-E017. Current route is north on Foothill Blvd only.		
8. Approved by: Name Mark Richie Signature: M Richie Position/Title: Dep Sheriff		
9. Reply:		



Message Handling

Three types of messages

1. Third party traffic

- Passed on behalf of a 3rd party; an official, traceable message
- *However*, if it is not clear to you, it may not be clear to the EOC. It's Ok to coach the originator and suggest clarity. But, it ultimately must be the originator's message.

2. Information / Observations / Reports

- Self-originated messages
- These messages may not be written and a written response may not be required. In this case, you control what the message text will be. When in doubt, write it down anyway.

3. Administrative traffic

- Can be a question to the NCO, Shift Supervisor, or other station, such as requesting a relief, inquiry on meals, requests for a station to meet you on a TAC-3, etc.



Message Handling

Three types of messages

2. Information / Observations / Reports

- Self-originated messages

Examples:

Net Control, this is K6KP, ***Checking in***

Net Control, this is the Forum with a ***Status Report***

Net Control, this is Stevens Creek Dam with an ***Observation Report***

Net Control, this is Post 2 with a ***Traffic Report***



Message Handling

Three types of messages

1. Third party traffic

- Passed on behalf of a 3rd party; an official, traceable message
- *However*, if it is not clear to you, it may not be clear to the EOC. It's Ok to coach the originator and suggest clarity. But, it ultimately must be the originator's message.

2. Information / Observations / Reports

- Self-originated messages
- These messages may not be written and a written response may not be required. In this case, you control what the message text will be. When in doubt, write it down anyway.

3. Administrative traffic

- Can be a question to the NCO, Shift Supervisor, or other station, such as requesting a relief, inquiry on meals, requests for a station to meet you on a TAC-3, etc.



Message Handling

Three types of messages

3. Administrative traffic

- Can be a question to the NCO, Shift Supervisor, or other station.

Examples:

Net Control, Station 2; What FRS channel is CERT on?

Net Control, Stevens Creek Dam; What time is my relief showing up?

Net Control, The Forum; I need to step away from the radio. I will let you know when I am back.



When in doubt...

See your CARES Field Communications Handbook for notes, hints, and reminders.

Field Communications Handbook

Cupertino ARES/RACES

January 2022



Timeline

Wildland Fire Scenario

Saturday

- 0830 Start check-ins at Staging – Monta Vista ARK
- 0900 Safety Briefing, make Field Assignments
 1. Allied Health Agencies
 2. Route Observers
 3. Stevens Creek Dam
 4. Organized neighborhoods
 5. Monta Vista ARK – CERT and CARES
 6. Comm 469
 7. County Fire Shadow?
 8. Quinlan Shelter, Temporary Evacuation Point, Others?
- 0945 All field responders at their posts.
- 1130 Secure field operations, travel back to the ICP (Monta Vista Park) for Demob.
- 1200 End of Exercise.



Finally, what to do now!

1. Know your Zone... <https://community.zonehaven.com/> ...
and write it down.
2. MAC Credit! Sign up on the SCC RACES website...
<https://www.scc-ares-races.org/activities/eventdetail.php?id=1220>



Thank you

Any Questions?

