

2022 Wildland Fire Canyon Trails Fire Evacuation Communications Exercise Prep

May 14, 2022
Jim Oberhofer



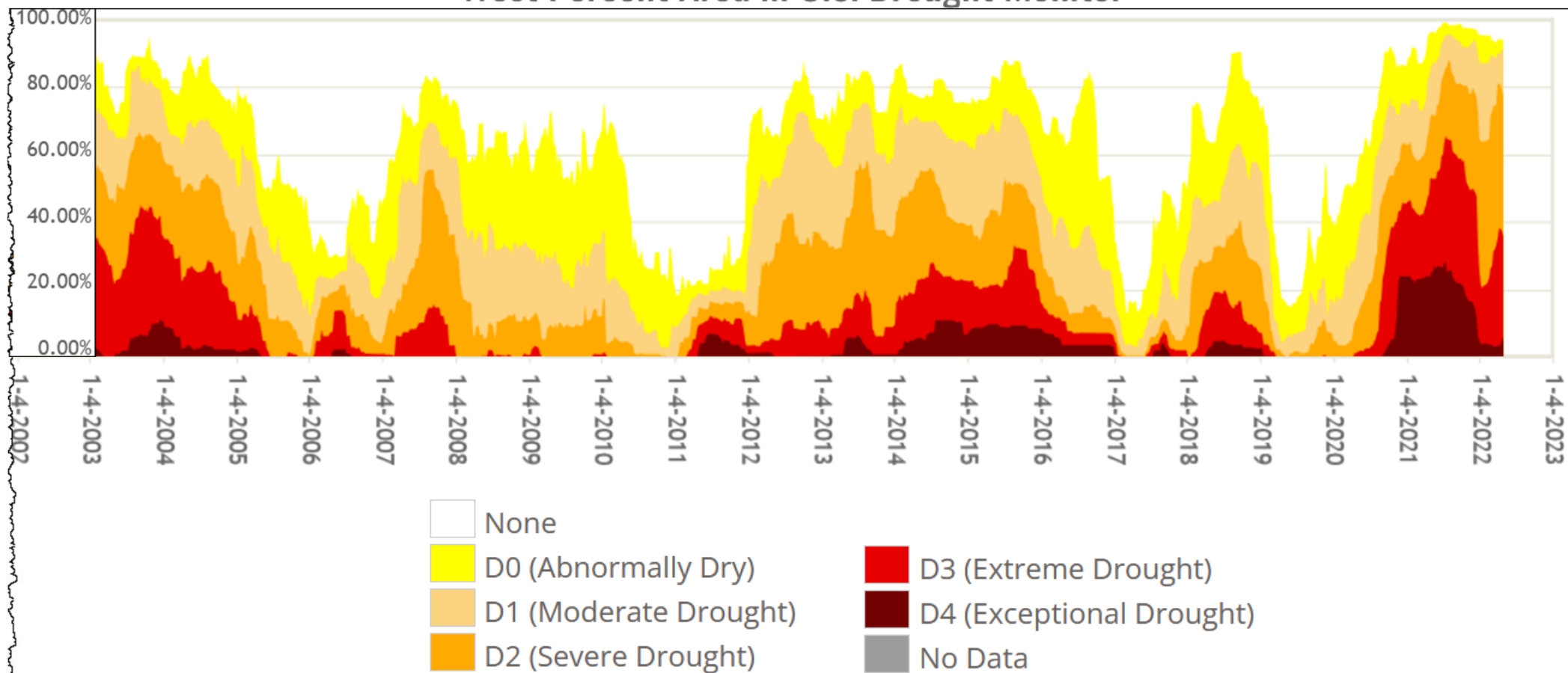
Why are we talking about evacuations?

- **Drought**
- **Recent wildland fires**
- **CZU Lightening Complex Fire**
- **Zonehaven Evacuation Management**
- **Cupertino OEM**



Western U.S. Drought Cycle

West Percent Area in U.S. Drought Monitor



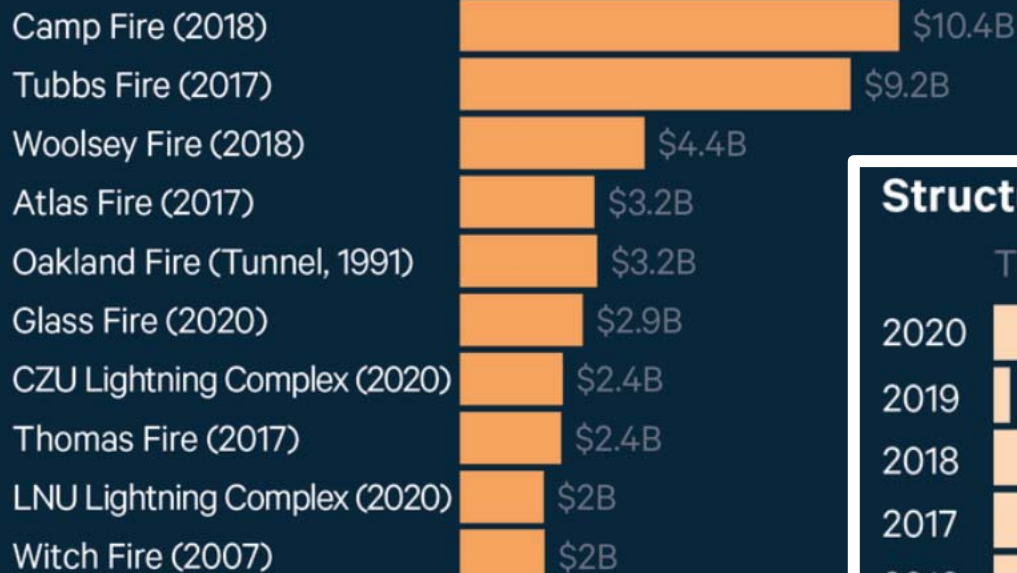
<https://droughtmonitor.unl.edu/DmData/TimeSeries.aspx>



Recent tragic wildland fires and US Wildfire Trends through 2020

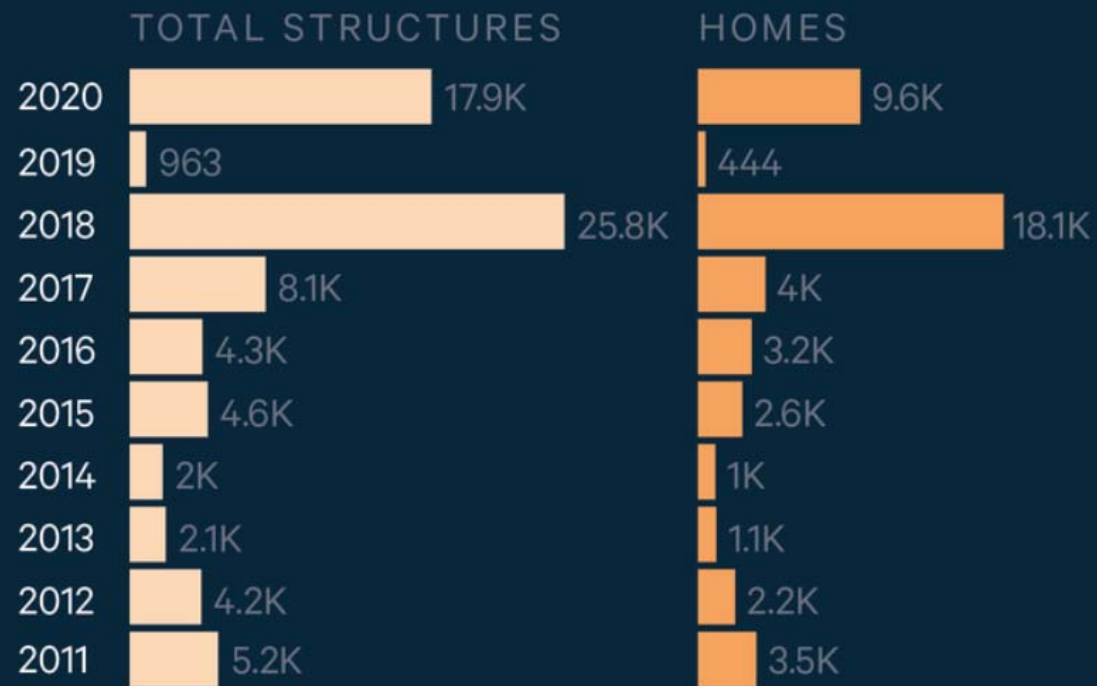
Most Destructive Fires by Financial Losses

ESTIMATED INSURED LOSSES (\$2020)



Of the ten most financially destructive fires ever to occur in the United States, eight occurred in the past five years. All ten occurred in California.

Structures Destroyed by Wildfires



The majority of structured destroyed by fires in the past ten years were lost in just two recent years: 2018 and 2020.



Recent tragic wildland fires

Real personal impacts

- **2017 Tubbs Fire, Sonoma County**

- 5,600 structures
- 37,000 acres
- 22 deaths

- **2018 Camp Fire, Butte County**

- 18,000 structures
- 15,000 acres
- 86 deaths

- **Cause: weather driven**

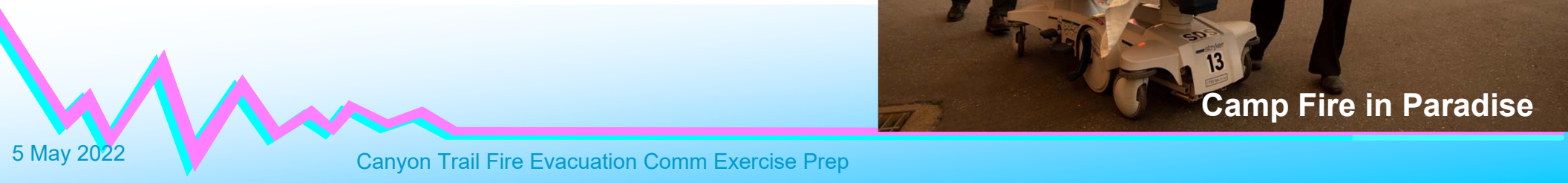
- Wind gusts of up to 40 to 60 mph
- Wind further desiccates already dry vegetation



Camp Fire in Paradise

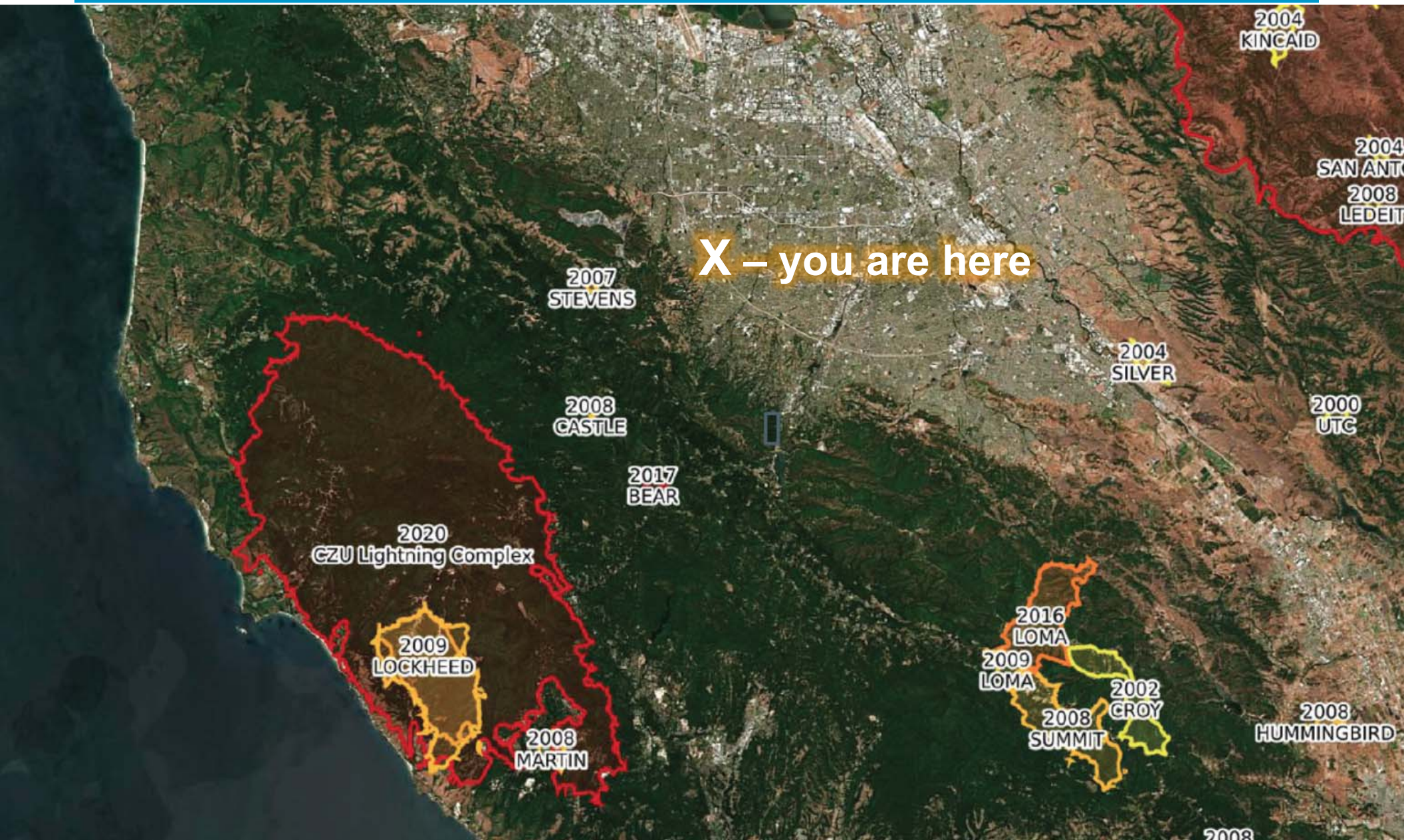


Camp Fire in Paradise



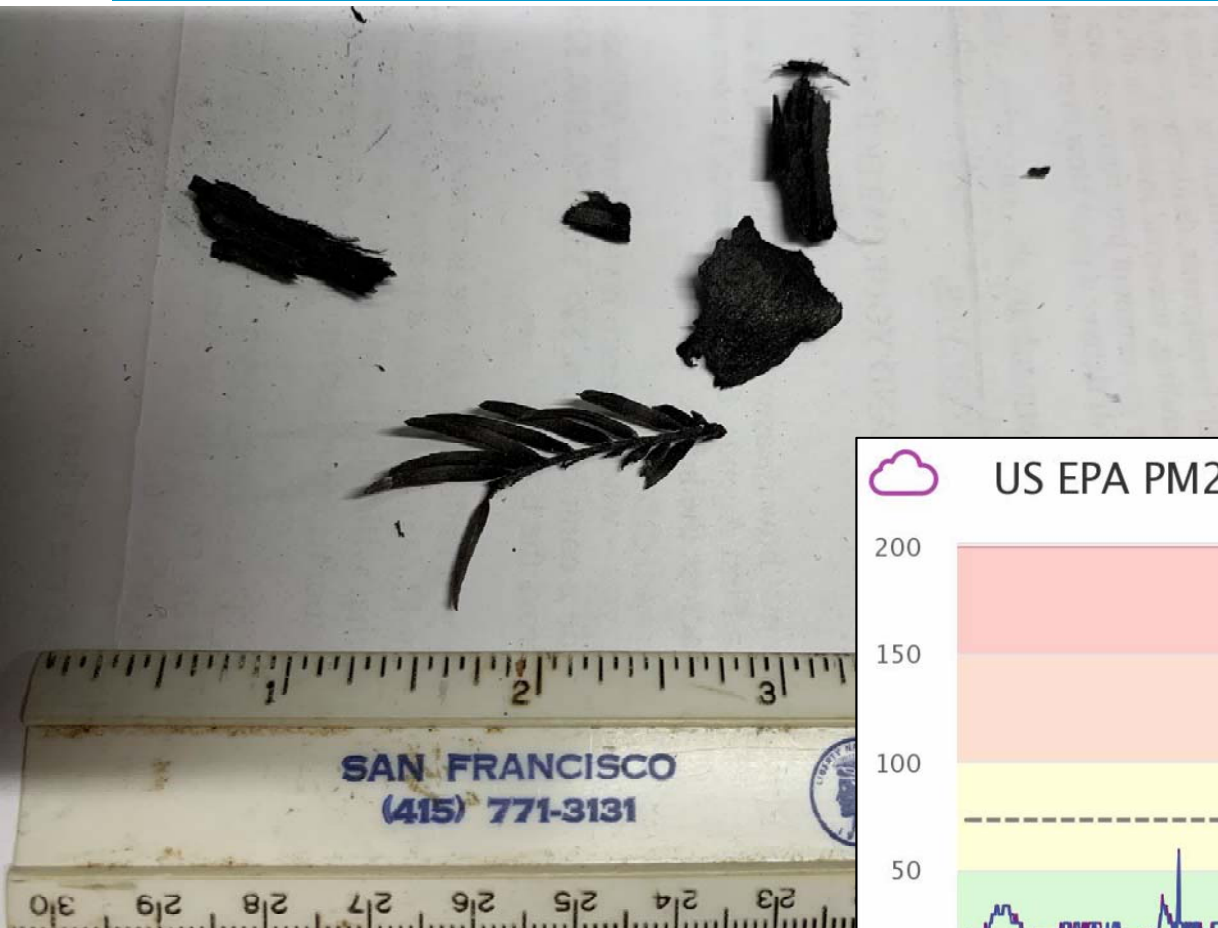
2020 – CZU Lightning Complex fire

Santa Cruz Mountains



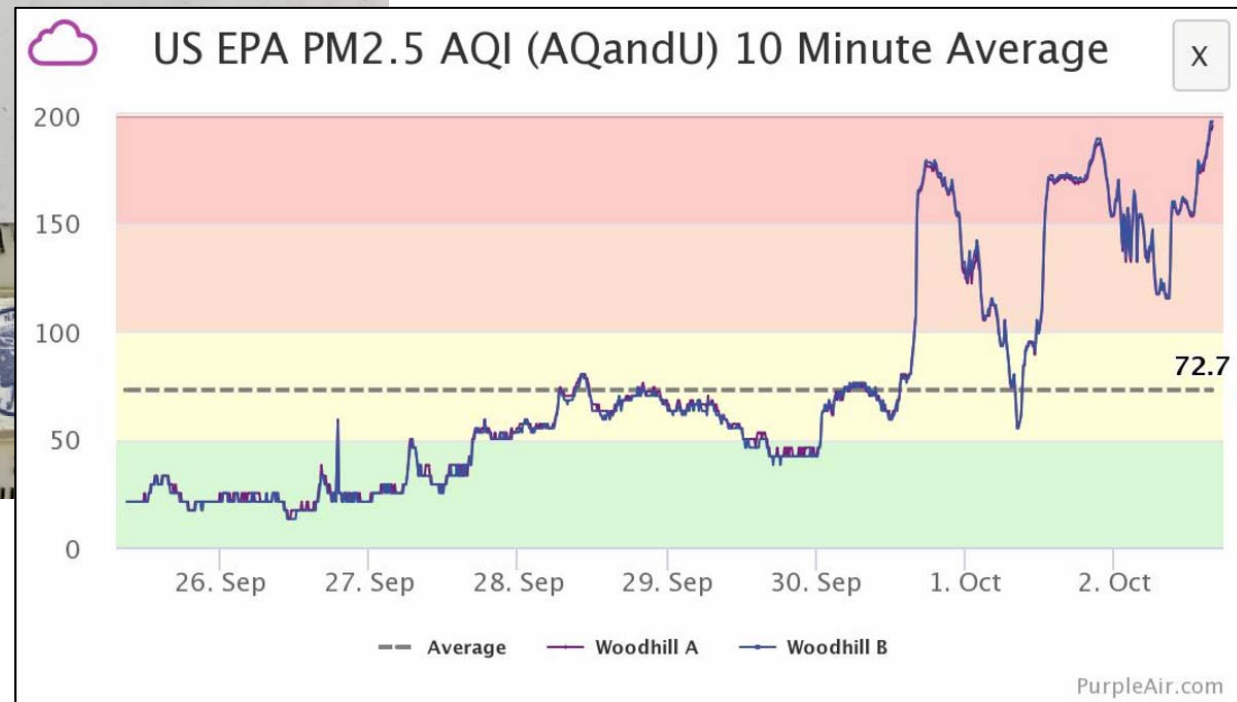
Cupertino ARES/RACES

2020 – CZU Lightning Complex fire



Ash fall in Cupertino

Impact on Air Quality



Cupertino ARES/RACES



Zonehaven Evacuation Management

What Zonehaven does

1. Real-time map-based information allows everyone to see the same information
2. Reduces time to get information to the community
3. Integrates with existing notification channels (AlertSCC)
4. Supports multi-agency coordination of evacuations
5. Incorporates local information that supports quicker evacuations
6. Accessible by the community

Protective actions



Zonehaven Evacuation Management

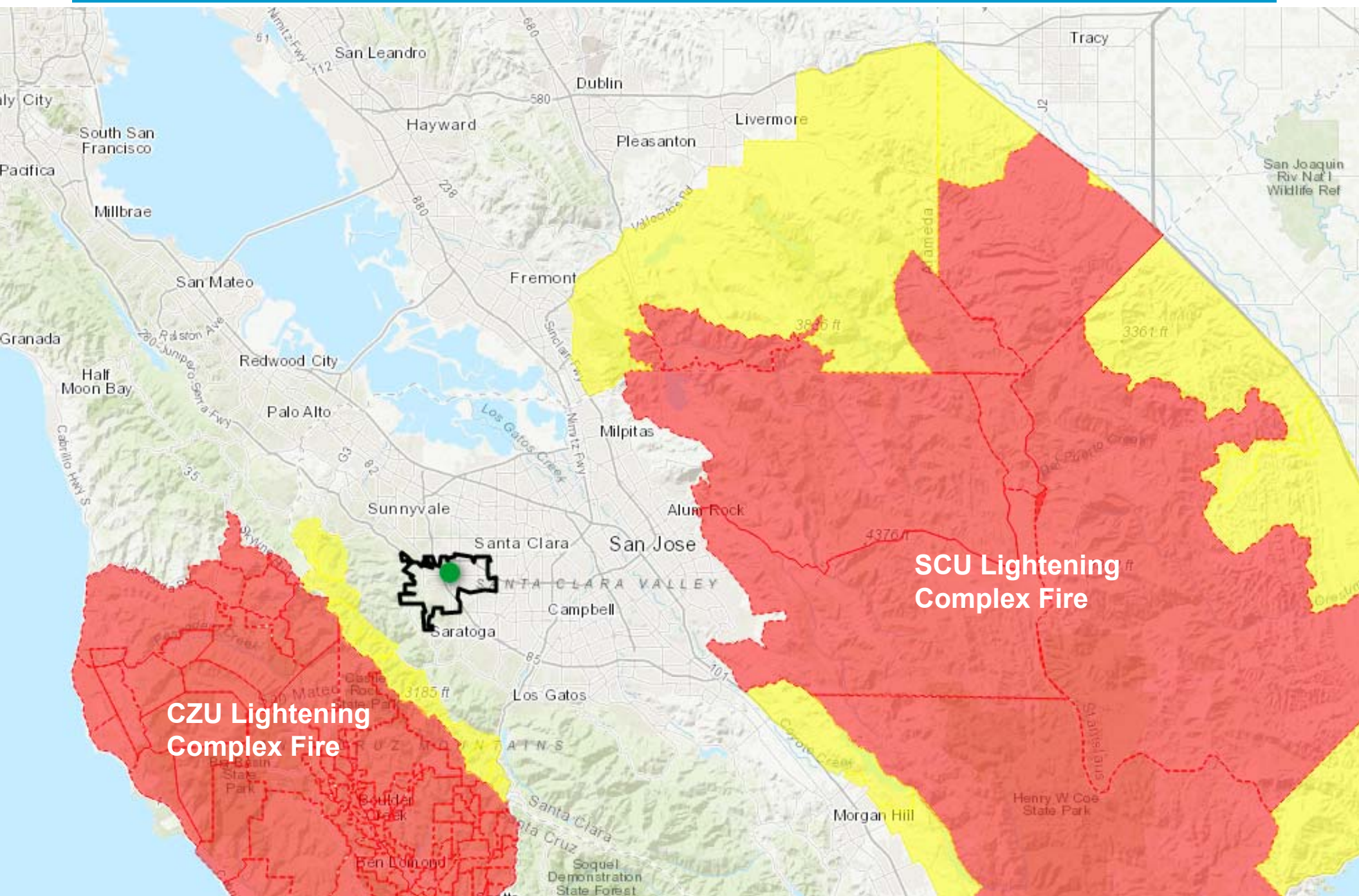
<https://www.sccfd.org/be-evacuation-ready>

California has adopted standard evacuation terminology:

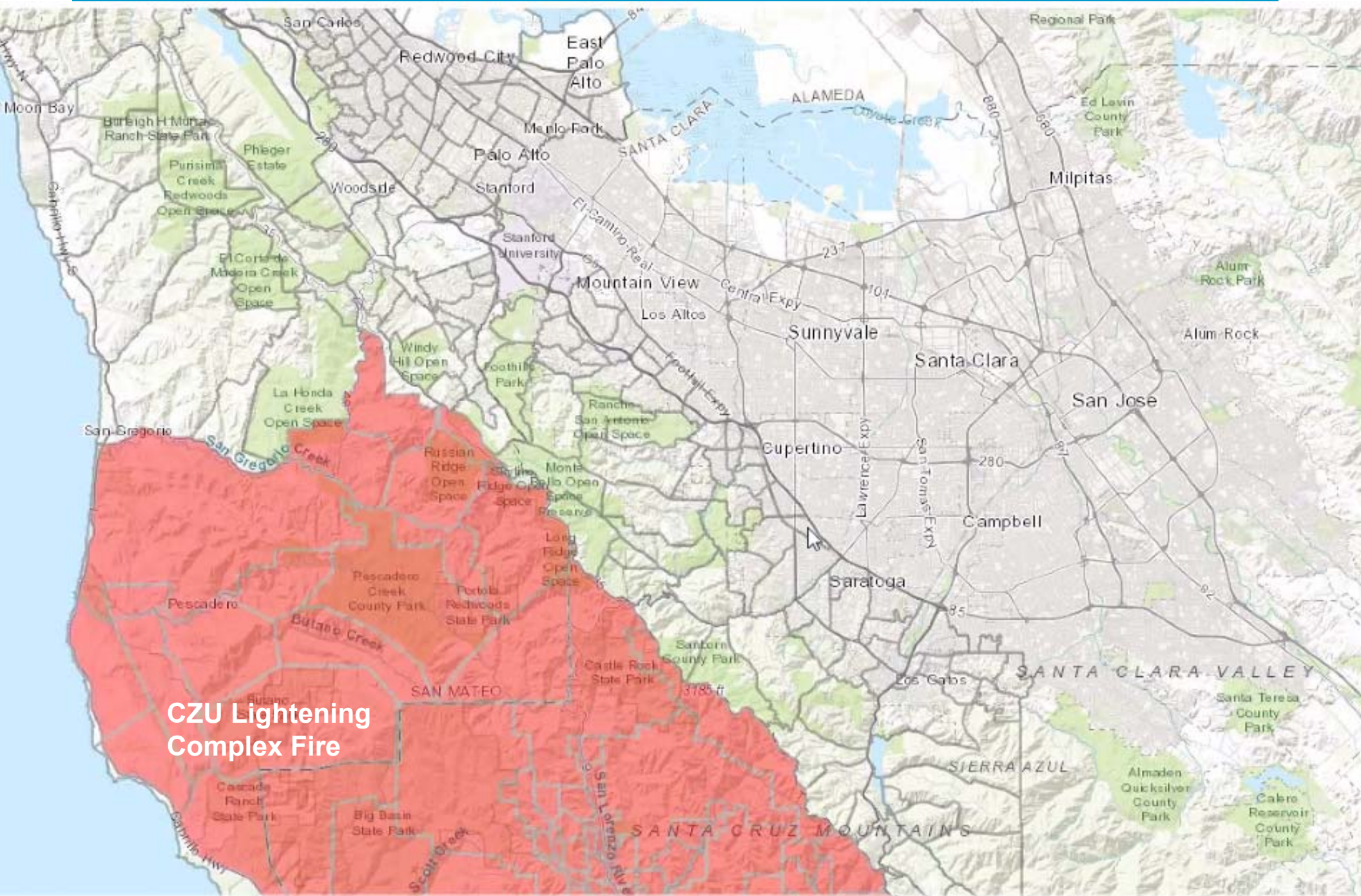
- ***Evacuation Warning:*** There is a potential threat to life and/or property. Those who require additional time to evacuate, and those with pets and livestock should leave now.
- ***Evacuation Order:*** There is an immediate threat to life. This is a lawful order to leave now. The area under evacuation order is now lawfully closed to public access.



Zonehaven and the CZU Lightning Complex Fire

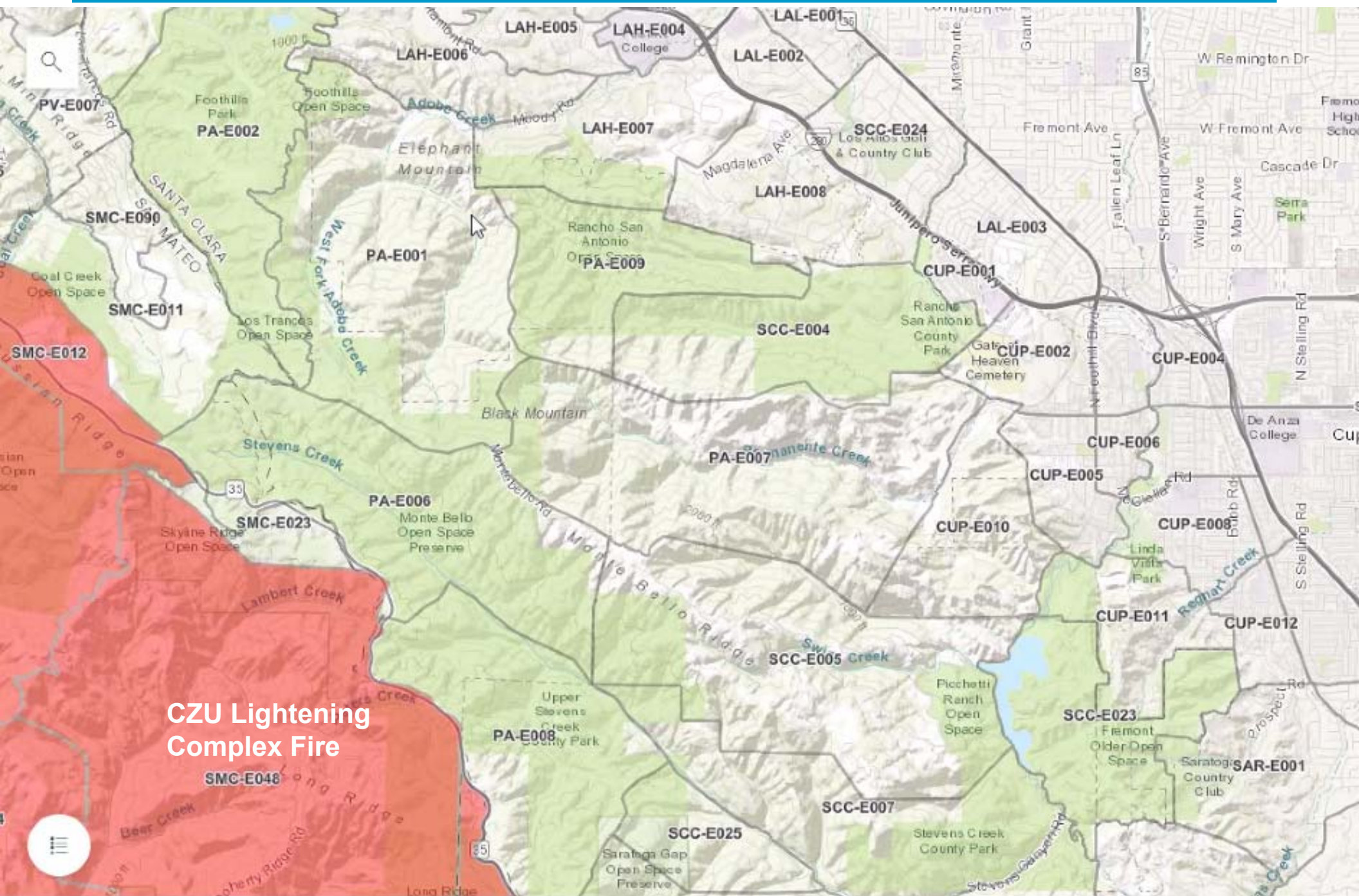


Zonehaven and the CZU Lightning Complex Fire



Zonehaven and the CZU Lightning Complex Fire

Preliminary zone assignments in Santa Clara County

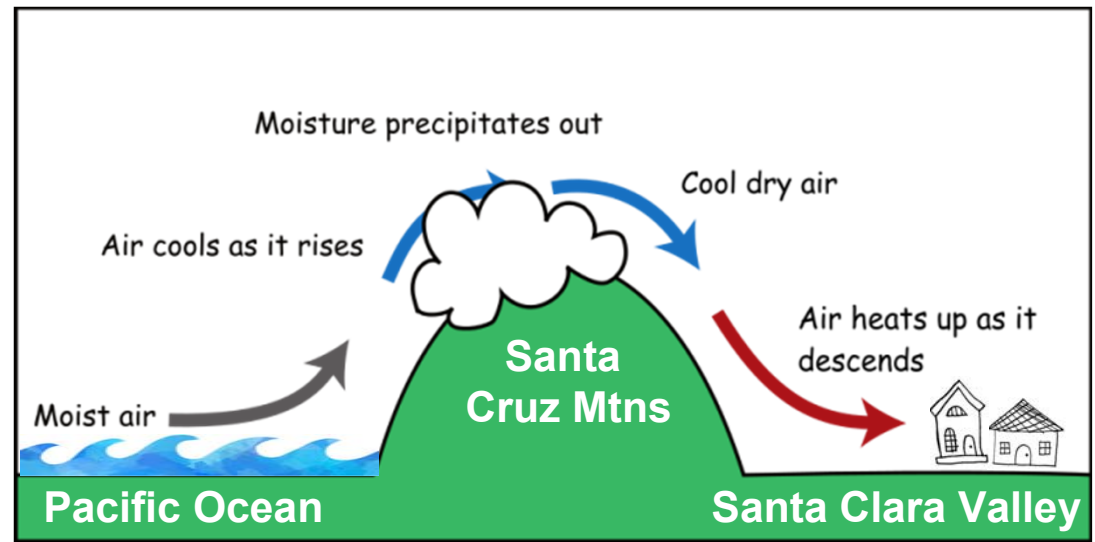


<https://community.zonehaven.com>



What is our risk?

- Its all about the weather.
- A westerly winds will bring in cool, moist air.
- A lot of that moisture precipitates out as clouds, mist, and rain over the Santa Cruz mountains (this is why the mountains are so green).
- While it is *unlikely* we would have dry Diablo-like or Santa Ana-like winds blowing in from the coast,
- Lightening strikes can still start fires (like 2020) and
- We need to prepare... just in case.



2022 – Thinking of Evacuations

Cupertino Office of Emergency Management

2022 Golden Eagle Exercise, Thursday 19-May, 9:00a-12:00p

- Partial functional exercise involving Cupertino EOC staff and first responder partner agencies.
- It focuses on response coordination at the onset of a wildfire threatening a community.
- Fire partners locate an incident command post in the wildland urban interface of west Cupertino.

Objectives

1. Establish unified command (UC) consisting of Law, Fire, and OEM
2. UC identifies evacuation zones subject to an *Evacuation Warning & Order*
3. Develop appropriate evacuation messaging for AlertSCC



2022 – Thinking of Evacuations

CCC and Cupertino Volunteers

Canyon Trail Fire Exercise, Saturday 21-May, 8:30a-12:00p

- Test our volunteer communications capabilities with a field deployment.
- This is in response to an evacuation warning and order issued due to a wildland fire threat to the city.

Objectives

1. The radio resource nets are operated per standard operating procedures.
2. Voice messages are passed by radio between field RACES teams and the Incident Command Post (ICP).
3. *Voice messages are passed between neighborhood radio volunteers and the local ARK.*
4. Voice & digital messages are passed between the ICP and County EOC.
5. Execute the Demob Process for all responders per the current procedure.



2022 Canyon Trail Fire Scenario

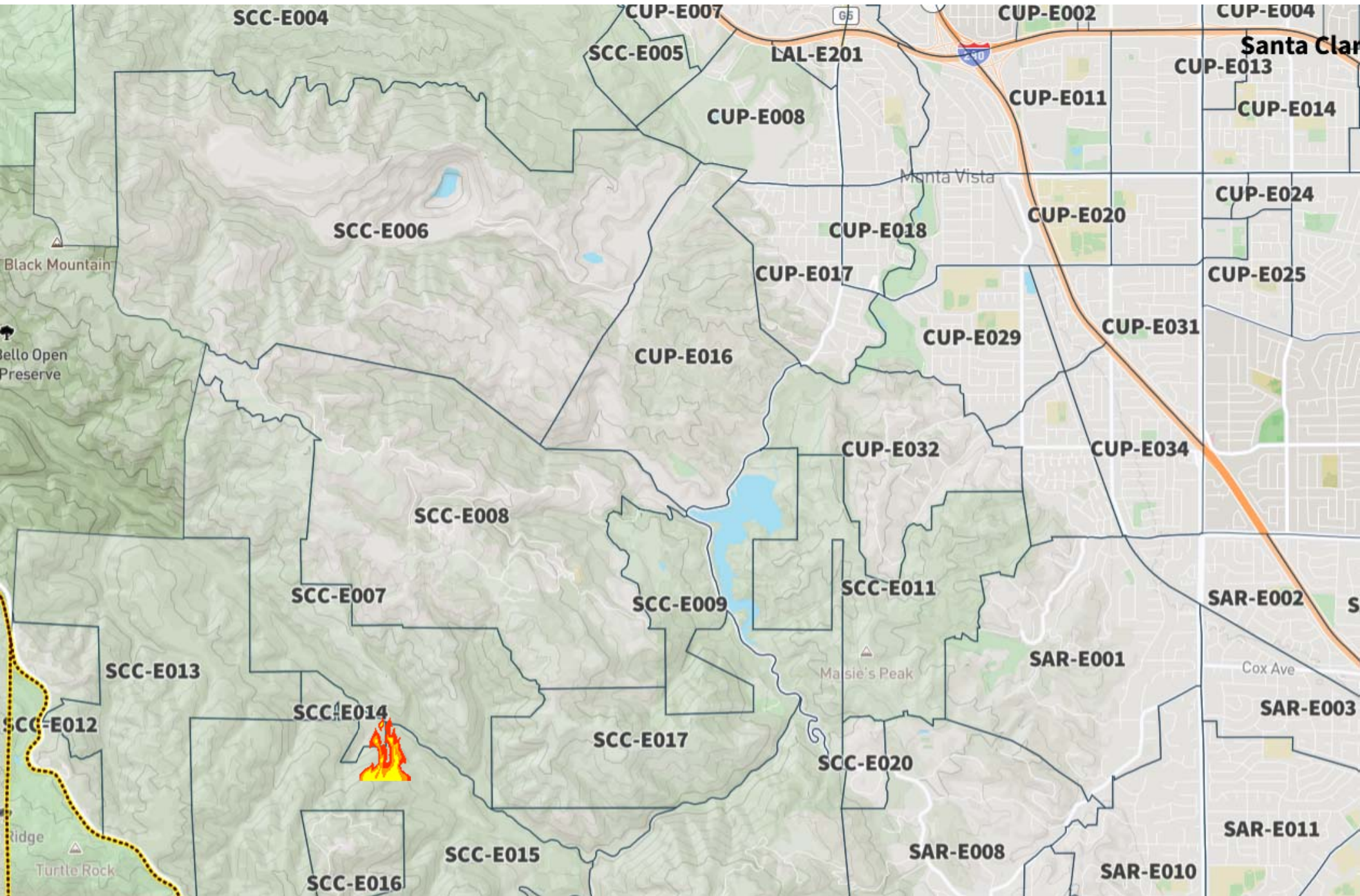
***** THIS IS DRILL TRAFFIC ****

The City is threatened by a wildland fire approaching from the Southwest.



Friday Afternoon, 12:25

Fire starts near Canyon Trail by Stevens Canyon Road



Fire spreading to the NE, Cupertino EOC to Level 3, ICP/UC established

E/O – Evacuation Order
E/W – Evacuation Warning

The map displays various evacuation zones in Santa Clara County, California. A wildfire, represented by a flame icon, is located in the southwestern part of the county, near the intersection of SCC-E011 and SCC-E017. The wildfire is surrounded by an orange buffer zone. Several zones are marked with orange text indicating an Evacuation Warning (E/W), including SCC-E008, CUP-E016, SCC-E009, and SCC-E017. One zone, CUP-E018, is marked with a red star and the text 'ICP'. Other zones shown include SCC-E004, SCC-E005, SCC-E006, SCC-E007, SCC-E012, SCC-E013, SCC-E015, SCC-E016, SCC-E020, SCC-E021, SCC-E011, SCC-E002, CUP-E002, CUP-E011, CUP-E014, CUP-E024, CUP-E025, CUP-E031, CUP-E032, CUP-E034, SAR-E001, SAR-E002, SAR-E003, SAR-E008, SAR-E010, SAR-E011, and LAL-E201. The map also shows major roads like Highway 65 and Highway 88, and geographical features like Black Mountain, Monta Vista, and Marsie's Peak.

Friday Evening, 19:00

Request Affiliated Volunteer support

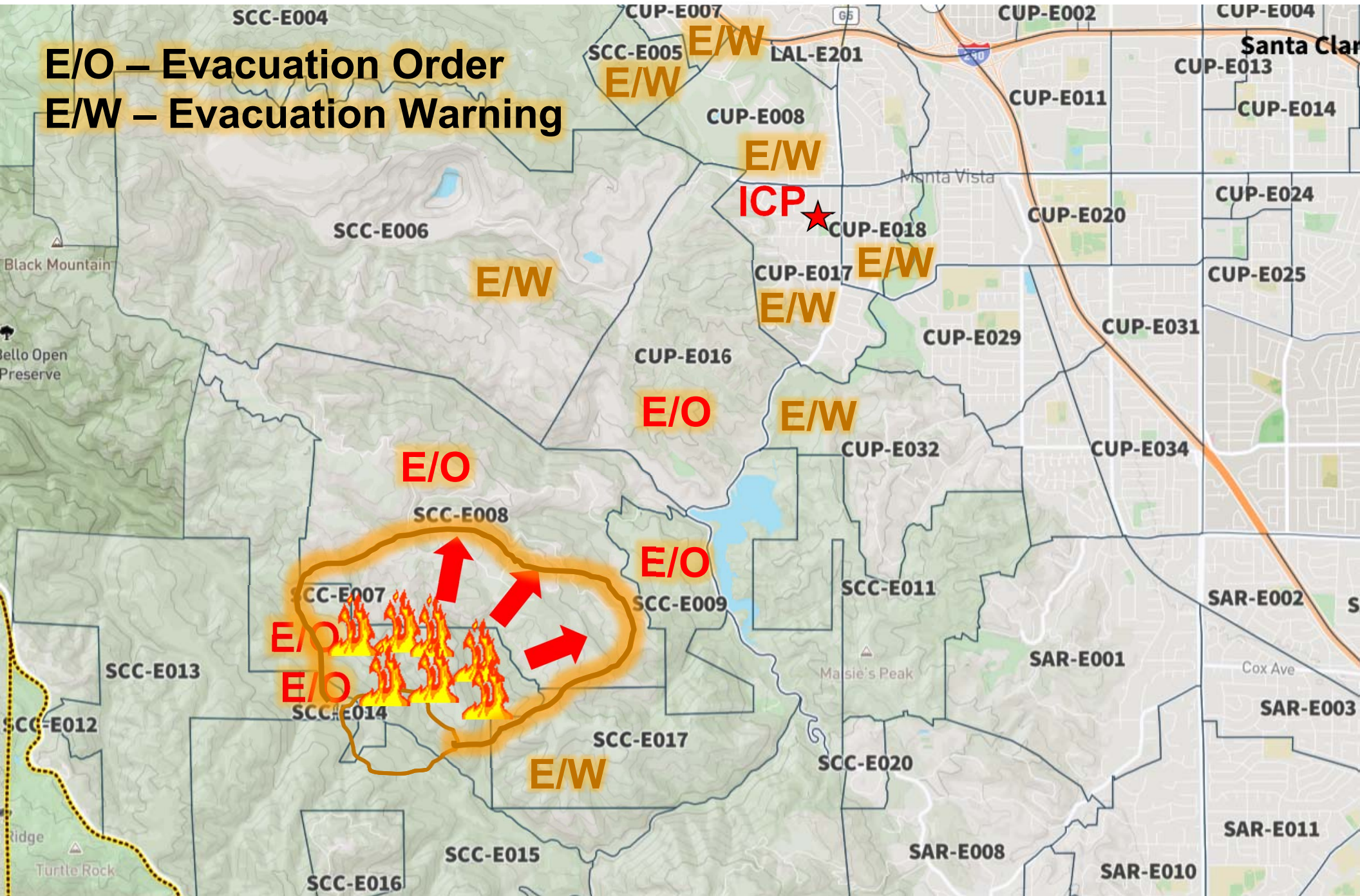
Cupertino OEM requests CCC and affiliated volunteers to activate Saturday morning in preparation to do the following:

1. Deploy Comm 469 to support the ICP.
2. Provide field observations on the evacuation routes.
3. Receive reports from impacted neighborhoods on their evacuation readiness and status.
4. Coordinate with senior residence communities on their evacuation readiness and status.
5. Support Shelter or TEP operations as required.
(TEP – Temporary Evacuation Point)



Saturday Morning, 09:30

Westerly winds gusts push the fire further northeast



Who are the players?

Wildland Fire Scenario

CAL Fire	<ul style="list-style-type: none">• Responds to fires on public lands, the water shed, and privately-owned wildlands
County Fire	<ul style="list-style-type: none">• Mutual Aid to CAL Fire• Responds to fires within their jurisdiction• Responds to medical emergencies
County Sheriff	<ul style="list-style-type: none">• Maintains law and order• Manages traffic control, road closures, evacuations
Public Health	<ul style="list-style-type: none">• Monitors air quality
Cupertino EOC	<ul style="list-style-type: none">• Staffs the EOC, ICP, monitors the situation• Provides community information• Works with Unified Command to make decisions that serve the best interest of its residents• Supports the incident with material, logistical support, and resources as necessary
Affiliated Volunteers	<ul style="list-style-type: none">• CARES, CERT, MRC, Block Leaders, Neighborhood Watch• These are resources for local neighborhood reporting, first aid, observations, and communications support as needed

What are the assignments? #1

Organized Neighborhoods

1. There are several organized neighborhoods in west Cupertino.
2. Neighborhoods report their evacuation readiness status, local medical issues, reluctant evacuees, and progress in the event of an evacuation order.
3. Positions typically staffed by CERT, Block Leader, or Neighborhood Watch volunteers.



What are the assignments? #2

Allied Health Agencies

1. Senior living facilities that include residences for independent living, assisted living, and skilled nursing.
2. Four facilities with skilled nursing are in west Cupertino:
 - a. The Forum
 - b. Sunny View Retirement Community
 - c. Marianist Center
 - d. Cupertino Healthcare and Wellness
3. These facilities report their readiness status and progress in the event of an evacuation order.
4. Positions may be staffed by CARES or CCC volunteers depending on available resources; Amateur Radio, GMRS, or FRS.



What are the assignments? #3

Route Observers

1. There are several traffic points in west Cupertino on which the city requests information.
2. Traffic flow, congestion, information sharing, relaying received reports from evacuating residents (reluctant residents, livestock), etc.
3. Positions are staffed by CARES, CERT, Block Leader, or Neighborhood Watch volunteers; radio required.



What are the assignments? #4

Stevens Creek Dam Site

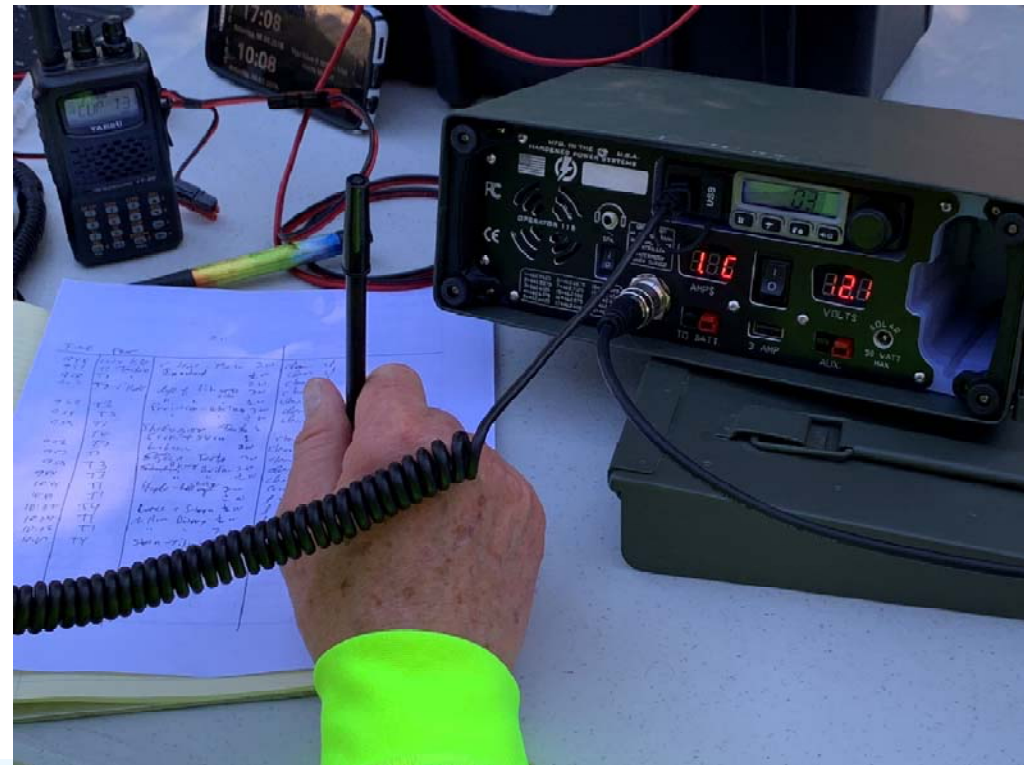
1. Undoubtedly, CAL Fire will be using the reservoir for water pickup and fire drops.
2. This position will be monitoring the CAL Fire operations and reports status or issues if they arise.
3. Position is staffed by CARES or CCC volunteers.



What are the assignments? #5

Monta Vista ARK (Zone 1)

1. This location will be the staging location when we get started and where the neighborhood net will be run for FRS users.
2. Two operators will be required:
 - a) Zone Net Control: will take check-ins, status, and reports from Zone 1 neighborhoods
 - b) ICP relay station. Forwards neighborhood reports to the ICP
3. Positions will be staffed by a
 - a) GMRS-licensed volunteer, and
 - b) CARES volunteer.

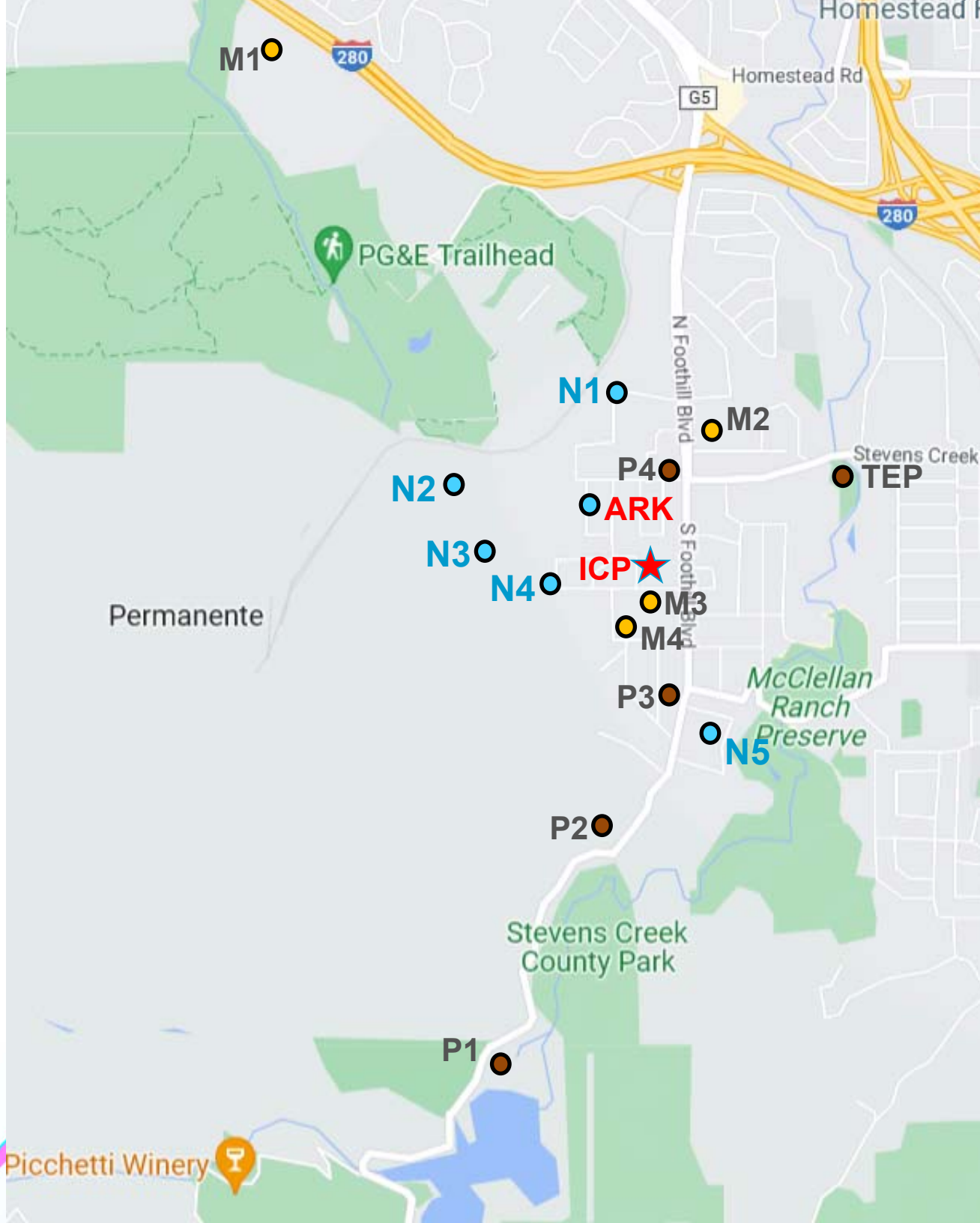


What are the assignments? #6

Public Safety Comm Vehicle – Comm 469

1. At the request of the ICP, Comm 469 will be deployed to the ICP for local evacuation support.
2. Staffing is required to cover the Cupertino resource and message nets, and county voice and digital message nets.
3. Positions will be staffed by CARES.





Assignments

Evacuation Scenario

Communications

ICP – Monta Vista Park

ARK – Monta Vista Fire Station

Neighborhoods (known)

N1 – Anthony/Salem

N2 – De Anza Oaks

N3 – Standing Oaks

N4 – Voss

N5 – Riverside St Andrews

Allied Health Facilities

M1 – The Forum

M2 – Sunny View Retirement

M3 – Cupertino Health...

M4 – Marianist Center

Observation/Route Posts

P1 – Post 1 Stevens Crk Dam

P2 – Post 2 SC County Park

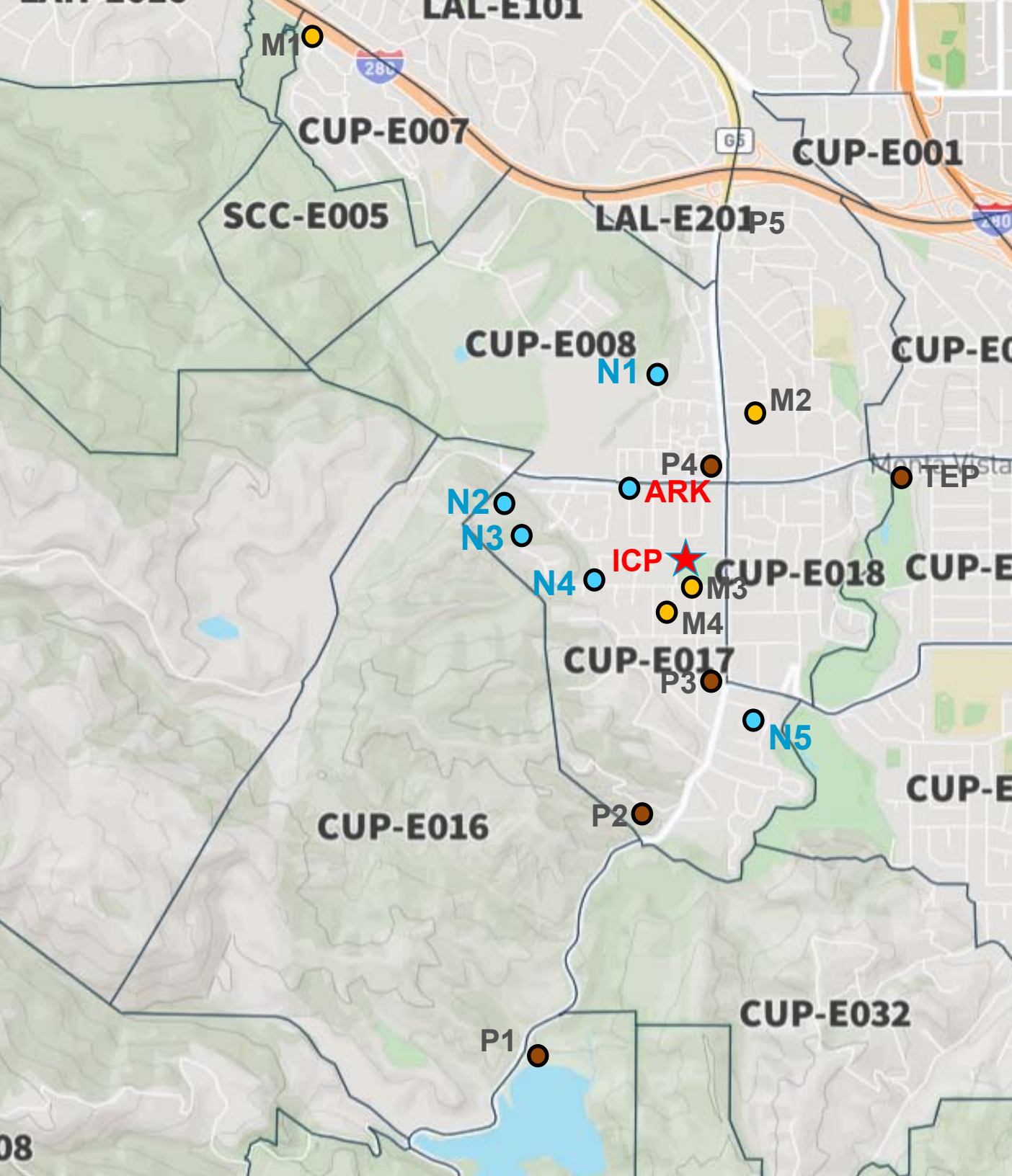
P3 – Post 3 McClellan Rd

P4 – Post 4 Stevens Crk Blvd

P? – Others?

Temporary Evacuation Point

TEP – Blackberry Farm



Assignments

Evacuation Scenario

Communications

ICP – Monta Vista Park

ARK – Monta Vista Fire Station

Neighborhoods (known)

N1 – Anthony/Salem

N2 – De Anza Oaks

N3 – Standing Oaks

N4 – Voss

N5 – Riverside St Andrews

Allied Health Facilities

M1 – The Forum

M2 – Sunny View Retirement

M3 – Cupertino Health...

M4 – Marianist Center

Observation/Route Posts

P1 – Post 1 Stevens Crk Dam

P2 – Post 2 SC County Park

P3 – Post 3 McClellan Rd

P4 – Post 4 Stevens Crk Blvd

P? – Others?

Temporary Evacuation Point

TEP – Blackberry Farm

Simulating the event

Wildland Fire Scenario

1. All field responders will receive a scenario sheet for your specific assignment.
2. It will include the current conditions, what you see, what you hear, and when it occurs.
3. At the assigned time, read that item, and take the necessary action.

Check in	<p>You pull out your FRS radio and wonder if Monta Vista ARK Net Control has started the net. You turn on your radio, make sure it is set for channel 1 / 21, and listen. Yup, there they are.</p> <p>Check in. Call Net Control and check in with (i) your name (ii) street or neighborhood, (iii) Zone number, and (iv) number of homes in your neighborhood.</p>
___ + 15 min	<p>Your committee just completed knocking on all doors in the neighborhood. About <pick-a-number> of them opened the door and now know the situation.</p> <p>Call Net Control and let them know everyone possible has been notified.</p>



Message Handling

Types of messages you might pass – Organized Neighborhoods

1. Check in to the Neighborhood ARK Net
2. Inform NCO that all residents have been informed of the evacuation situation.
3. With some Zones set to **Evacuation Warning**, some residents might choose to leave now to beat the traffic
4. Checking out, leaving now, number of known residents still at home.

What could go wrong? For instance...

4. Neighbors with medical issues
 - Resident has oxygen machine and will need O2 tanks to travel, etc.
5. Neighbors with mobility issues
 - Resident is bed-bound and will need ambulance transport
 - Resident is wheelchair-bound and will need lift transport
6. Neighbor reports their car is out of gas
7. Neighbor is away and has livestock on their property
8. Neighbors who refuse to leave (addresses are ...)



Radio Operations Refresher

Making Contact

- Listen first, press & hold the PTT, take a breath, pass your message, and then release the PTT
 - *“Monta Vista ARK, this is Sally at De Anza Oaks”*
 - *“Net Control, this is Jerry at Riverside-St Andrews”*
- Use tactical names, not personal names
 - *“Net Control, this is Voss Neighborhood with a report”*
- When making initial call, key words can help
 - *“Net Control, this is Standing Oaks with an evacuation update”*
- If the other party doesn't answer, wait and try again
 - They may be busy
 - Frees up the channel for others



When in doubt...

See your CCC Field Communications Handbook for notes, hints, and reminders.

Cupertino Citizen Corps Field Communications Handbook

March 2022



Interested in participating?

1. This is a communications exercise, not a real evacuation!
2. We are simulating the conditions that could lead up to the time we might actually need to evacuate.
3. It is ok to share this information with your neighbors, invite them to watch or listen in, but other than the radio operators, there is nothing your neighborhood needs to do!
4. This scenario offers a great opportunity for CERT, Block Leaders, and Neighborhood watch captains to talk with your neighbors about what we might do if this really occurred.



Interested in participating?

1. Interested in participating but don't have an FRS radio? We have a few at Monta Vista ARK that we can **loan** you for this exercise.
2. Interested in participating but not sure your FRS radio works? Then definitely come to Monta Vista ARK at 8:30am and we can check your radio and its settings.
3. If interested in participating, then send an email to jimo@cupertino.org with your name and street or neighborhood that you will be representing.



Timeline

Wildland Fire Scenario

Saturday, 21-May

- 0830 Proceed to Staging – Monta Vista ARK
- 0900 Safety Briefing, make Field Assignments
 1. Organized neighborhoods
 2. Allied Health Agencies
 3. Route Observers
 4. Stevens Creek Dam
 5. Monta Vista ARK – CERT and CARES
 6. Comm 469
- 0945 All field responders at their posts.
- 1130 Secure field operations, travel back to the ICP (Monta Vista Park) for Demob.
- 1200 End of Exercise.



Finally, what to do now!

1. Know your Zone... <https://community.zonehaven.com/> ...
and write it down on your Handbook!
2. SCCFD Zonehaven webinar (free!), monthly through 2022,
next one is May 12th, 6:30pm – 7:30pm
<https://www.eventbrite.com/e/webinar-zonehaven-know-your-evacuation-zone-2022-tickets-261122874547>
3. If interested in participating on May 21st, then send an email to
jimo@cupertino.org with your name and street or
neighborhood that you will be representing



Thank you

Any Questions?

